

NFAT5 (Phospho Ser155) Rabbit pAb

CatalogNo: YP0474 **Orthogonal Validated** 

Key Features

Host Species

- Rabbit

Reactivity

- Human, Mouse

Applications

- WB, IHC, ELISA

MW

- 200kD (Observed)

Isotype

- IgG

Storage

Storage* -15°C to -25°C/1 year (Do not lower than -25°C)

Formulation Liquid in PBS containing 50% glycerol, 0.5% BSA and 0.02% sodium azide.

Recommended Dilution Ratios

WB 1:500-2000

IHC 1:50-300

ELISA :5000-1:20000

Basic Information

Clonality Polyclonal

Immunogen Information

Immunogen The antiserum was produced against synthesized peptide derived from human NFAT5/TonEBP around the phosphorylation site of Ser155. AA range:121-170

Specificity Phospho-NFAT5 (S155) Polyclonal Antibody detects endogenous levels of NFAT5 protein only when phosphorylated at S155. The name of modified sites may be influenced by many factors, such as species (the modified site was not originally found in human samples) and the change of protein sequence (the previous protein sequence is incomplete, and the protein sequence may be prolonged with the development of protein sequencing technology). When naming, we will use the "numbers" in historical reference to keep the sites consistent with the reports. The antibody binds to the following modification sequence (lowercase letters are modification sites): DNSRM

Target Information

Gene name NFAT5

Protein Name Nuclear factor of activated T-cells 5

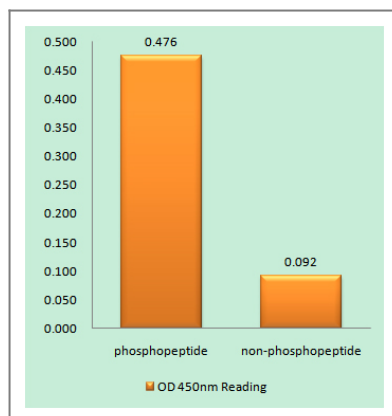
| Organism | Gene ID | UniProt ID |
|----------|-------------------------|--------------------------|
| Human | 10725 ; | O94916 ; |
| Mouse | | Q9WV30 ; |

Cellular Localization Nucleus . Cytoplasm . Nuclear distribution increases under hypertonic conditions. .

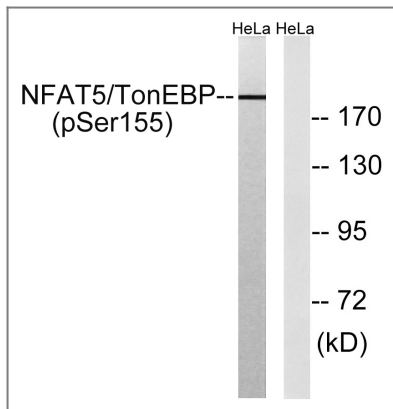
Tissue specificity Widely expressed, with highest levels in skeletal muscle, brain, heart and peripheral blood leukocytes.

Function Alternative products:Experimental confirmation may be lacking for some isoforms,Function:Plays a role in the inducible expression of genes. Regulates hypertonicity-induced cellular accumulation of osmolytes.,similarity:Contains 1 RHD (Rel-like) domain.,subunit:Does not bind with Fos and Jun transcription factors. But might be capable of forming stable dimers with DNA elements.,tissue specificity:Highest levels in skeletal muscle, brain, heart and peripheral blood leukocytes. Also expressed in placenta, lung, liver, kidney, pancreas, spleen, thymus, prostate, testis, ovary, small intestine and colon.,

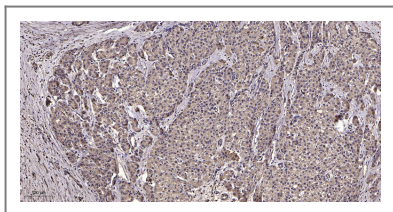
Validation Data



Enzyme-Linked Immunosorbent Assay (Phospho-ELISA) for Immunogen Phosphopeptide (Phospho-left) and Non-Phosphopeptide (Phospho-right), using NFAT5/TonEBP (Phospho-Ser155) Antibody



Western blot analysis of lysates from HeLa cells treated with forskolin 40nM 30', using NFAT5/TonEBP (Phospho-Ser155) Antibody. The lane on the right is blocked with the phospho peptide.



Immunohistochemical analysis of paraffin-embedded human liver cancer. 1, Antibody was diluted at 1:200(4° overnight). 2, Tris-EDTA,pH9.0 was used for antigen retrieval. 3,Secondary antibody was diluted at 1:200(room temperature, 45min).

Contact information

Orders: order.cn@immunoway.com
 Support: support.cn@immunoway.com
 Telephone: 400-8787-807(China)
 Website: <http://www.immunoway.com.cn>
 Address: 2200 Ringwood Ave San Jose, CA 95131 USA



Please scan the QR code to access additional product information:
NFAT5 (Phospho Ser155) Rabbit pAb

For Research Use Only. Not for Use in Diagnostic Procedures.

[Antibody](#) | [ELISA Kits](#) | [Protein](#) | [Reagents](#)