

Neuro D (Phospho Ser274) Rabbit pAb

CatalogNo: YP0473 **Orthogonal Validated** 

Key Features

Host Species

- Rabbit

Reactivity

- Human, Mouse, Rat

Applications

- WB, IHC

MW

- 36kD (Observed)

Isotype

- IgG

Storage

Storage* -15°C to -25°C/1 year (Do not lower than -25°C)

Formulation Liquid in PBS containing 50% glycerol, 0.5% BSA and 0.02% sodium azide.

Recommended Dilution Ratios

WB 1:500-2000

IHC 1:50-300

Basic Information

Clonality Polyclonal

Immunogen Information

Immunogen The antiserum was produced against synthesized peptide derived from human Neuro D around the phosphorylation site of Ser274. AA range: 240-289

Specificity Phospho-Neuro D (S274) Polyclonal Antibody detects endogenous levels of Neuro D protein only when phosphorylated at S274. The name of modified sites may be influenced by many factors, such as species (the modified site was not originally found in human samples) and the change of protein sequence (the previous protein sequence is incomplete, and the protein sequence may be prolonged with the development of protein sequencing technology). When naming, we will use the "numbers" in historical reference to keep the sites consistent with the reports. The antibody binds to the following modification sequence (lowercase letters are modification sites): PLsPP

Target Information

Gene name NEUROD1

Protein Name Neurogenic differentiation factor 1

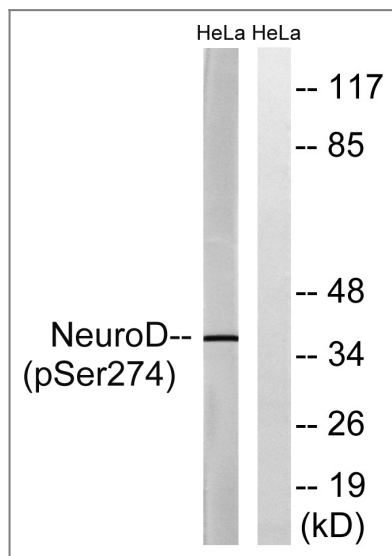
Organism	Gene ID	UniProt ID
Human	4760 ;	Q13562 ;
Mouse	18012 ;	Q60867 ;
Rat	29458 ;	Q64289 ;

Cellular Localization Cytoplasm . Nucleus . In pancreatic islet cells, shuttles to the nucleus in response to glucose stimulation (By similarity). Colocalizes with NR0B2 in the nucleus. .

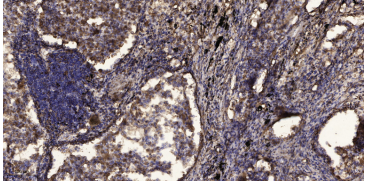
Tissue specificity Eye,Retina,Rhabdomyosarcoma,

Function Disease:Defects in NEUROD1 are the cause of maturity onset diabetes of the young type 6 (MODY6) [MIM:606394]. MODY [MIM:606391] is characterized by an autosomal dominant mode of inheritance, onset during young adulthood and a primary defect in insulin secretion.,Function:Differentiation factor required for dendrite morphogenesis and maintenance in the cerebellar cortex. Transcriptional activator. Binds to the insulin gene E-box.,PTM:Phosphorylated. In islet cells, phosphorylated on Ser-274 upon glucose stimulation; which may be required for nuclear localization. In activated neurons, phosphorylated on Ser-335; which promotes dendritic growth.,similarity:Contains 1 basic helix-loop-helix (bHLH) domain.,subunit:Efficient DNA binding requires dimerization with another bHLH protein. Heterodimer with TCF3/E47. Interacts with RREB1.,

Validation Data



Western blot analysis of lysates from HeLa cells treated with UV 15', using Neuro D (Phospho-Ser274) Antibody. The lane on the right is blocked with the phospho peptide.



Immunohistochemical analysis of paraffin-embedded human Squamous cell carcinoma of lung. 1, Antibody was diluted at 1:200(4° overnight). 2, Tris-EDTA,pH9.0 was used for antigen retrieval. 3,Secondary antibody was diluted at 1:200(room temperature, 45min).

| Contact information

Orders: order.cn@immunoway.com
Support: support.cn@immunoway.com
Telephone: 400-8787-807(China)
Website: <http://www.immunoway.com.cn>
Address: 2200 Ringwood Ave San Jose, CA 95131 USA



Please scan the QR code to access additional product information:
Neuro D (Phospho Ser274) Rabbit pAb

For Research Use Only. Not for Use in Diagnostic Procedures.

[Antibody](#) | [ELISA Kits](#) | [Protein](#) | [Reagents](#)