

## Eps15 (Phospho Tyr849) Rabbit pAb

CatalogNo: YP0469

### Key Features

#### Host Species

- Rabbit

#### Reactivity

- Human, Mouse, Rat

#### Applications

- WB, ELISA

#### MW

- 100kD (Observed)

#### Isotype

- IgG

### Storage

**Storage\*** -15°C to -25°C/1 year (Do not lower than -25°C)

**Formulation** Liquid in PBS containing 50% glycerol, 0.5% BSA and 0.02% sodium azide.

### Recommended Dilution Ratios

**WB 1:500-1:2000**

**ELISA 1:10000**

**Not yet tested in other applications.**

### Basic Information

**Clonality** Polyclonal

### Immunogen Information

**Immunogen** Synthesized phospho-peptide around the phosphorylation site of human Eps15 (phospho Tyr849)

**Specificity** Phospho-Eps15 (Y849) Polyclonal Antibody detects endogenous levels of Eps15 protein only when phosphorylated at Y849. The name of modified sites may be influenced by many factors, such as species (the modified site was not originally found in human samples) and the change of protein sequence (the previous protein sequence is incomplete, and the protein sequence may be prolonged with the development of protein sequencing technology). When naming, we will use the "numbers" in historical reference to keep the sites consistent with the reports. The antibody binds to the following modification sequence (lowercase letters are modification sites): S<sub>A</sub>Y<sub>P</sub>S

## Target Information

**Gene name** EPS15

**Protein Name** Epidermal growth factor receptor substrate 15

Organism	Gene ID	UniProt ID
Human	<a href="#">2060</a> ;	<a href="#">P42566</a> ;
Mouse	<a href="#">13858</a> ;	<a href="#">P42567</a> ;

### Cellular Localization

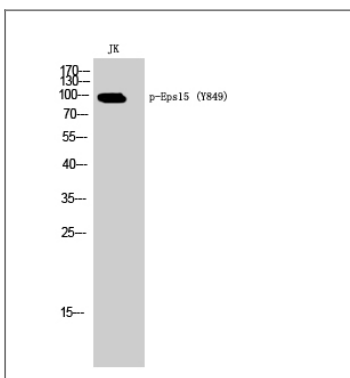
Cytoplasm. Cell membrane; Peripheral membrane protein; Cytoplasmic side. Membrane, clathrin-coated pit. Recruited to the plasma membrane upon EGFR activation and localizes to coated pits. Colocalizes with UBQLN1 in ubiquitin-rich cytoplasmic aggregates that are not endocytic compartments and in cytoplasmic juxtannuclear structures called aggresomes. .; [Isoform 2]: Early endosome membrane ; Peripheral membrane protein ; Cytoplasmic side . Colocalizes with HGS on bilayered clathrin coats on endosomes.

**Tissue specificity** Ubiquitously expressed.

### Function

Disease:A chromosomal aberration involving EPS15 is found in acute leukemias. Translocation t(1;11)(p32;q23) with MLL/HRX. The result is a rogue activator protein.,Domain:The EH domain interacts with Asn-Pro-Phe (NPF) motifs of target proteins.,Function:Involved in cell growth regulation. May be involved in the regulation of mitogenic signals and control of cell proliferation. Involved in the internalization of ligand-inducible receptors of the receptor tyrosine kinase (RTK) type, in particular EGFR. Plays a role in the assembly of clathrin-coated pits.,PTM:Phosphorylation on Tyr-849 is involved in the internalization of EGFR. Not required for membrane translocation after EGF treatment or for targeting to coated pits, but essential for a subsequent step in EGFR endocytosis (By similarity). Phosphorylated on serine upon DNA damage, probably by ATM or ATR.,similarity:Contains 2 EF-hand domains.,similarity:Contains 2 UIM (ubiquitin-interacting motif) repeats.,similarity:Contains 3 EH domains.,subcellular location:Colocalizes with HGS on bilayered clathrin coats on endosomes.,subcellular location:Recruited to the plasma membrane upon EGFR activation and localizes to coated pits.,subunit:Interacts with HGS; the interaction bridges the interaction of STAM or STAM2 with EPS15. Isoform 2 interacts with HGS and AP2A2. Part of a complex at least composed of EPS15, HGS, and either STAM1 or STAM2. Binds AP2A2 and AP2B1. Binds STON2 and EPN1. Interacts (via its SH3-binding sites) with CRK. Interacts with SH3BP4/TTP.,tissue specificity:Ubiquitously expressed.,

## Validation Data



Western Blot analysis of JK cells using Phospho-Eps15 (Y849) Polyclonal Antibody

## | Contact information

Orders: order.cn@immunoway.com  
Support: support.cn@immunoway.com  
Telephone: 400-8787-807(China)  
Website: <http://www.immunoway.com.cn>  
Address: 2200 Ringwood Ave San Jose, CA 95131 USA



Please scan the QR code to access additional product information:  
**Eps15 (Phospho Tyr849) Rabbit pAb**

---

For Research Use Only. Not for Use in Diagnostic Procedures.

[Antibody](#) | [ELISA Kits](#) | [Protein](#) | [Reagents](#)