

## C/EBP $\alpha$ (Phospho Thr230) Rabbit pAb

CatalogNo: YP0463

### Key Features

#### Host Species

- Rabbit

#### Reactivity

- Human, Mouse, Rat

#### Applications

- WB, ELISA

#### MW

- 42kD, also have 30kD isform (Observed)

#### Isotype

- IgG

### Storage

**Storage\*** -15°C to -25°C/1 year (Do not lower than -25°C)

**Formulation** Liquid in PBS containing 50% glycerol, 0.5% BSA and 0.02% sodium azide.

### Recommended Dilution Ratios

**WB 1:500-1:2000**

**ELISA 1:10000**

**Not yet tested in other applications.**

### Basic Information

**Clonality** Polyclonal

### Immunogen Information

**Immunogen** Synthesized phospho-peptide around the phosphorylation site of human C/EBP  $\alpha$  (phospho Thr230)

## Specificity

Phospho-C/EBP  $\alpha$  (T230) Polyclonal Antibody detects endogenous levels of C/EBP  $\alpha$  protein only when phosphorylated at T230. The name of modified sites may be influenced by many factors, such as species (the modified site was not originally found in human samples) and the change of protein sequence (the previous protein sequence is incomplete, and the protein sequence may be prolonged with the development of protein sequencing technology). When naming, we will use the "numbers" in historical reference to keep the sites consistent with the reports. The antibody binds to the following modification sequence (lowercase letters are modification sites): PpTPV

## Target Information

**Gene name** CEBPA

**Protein Name** CCAAT/enhancer-binding protein alpha

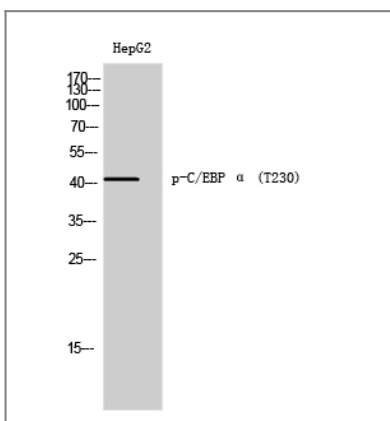
Organism	Gene ID	UniProt ID
Human	<a href="#">1050</a> ;	<a href="#">P49715</a> ;
Mouse	<a href="#">12606</a> ;	<a href="#">P53566</a> ;
Rat	<a href="#">24252</a> ;	<a href="#">P05554</a> ;

**Cellular Localization** Nucleus .; [Isoform 4]: Nucleus, nucleolus .

**Tissue specificity** Liver, Pancreas, Umbilical cord, White Matter pool- 5 brain tissues- f

**Function** Function: C/EBP is a DNA-binding protein that recognizes two different motifs: the CCAAT homology common to many promoters and the enhanced core homology common to many enhancers., similarity: Belongs to the bZIP family., similarity: Belongs to the bZIP family. C/EBP subfamily., similarity: Contains 1 bZIP domain., subunit: Binds DNA as a dimer and can form stable heterodimers with C/EBP beta and gamma. Interacts with UBN1. Interacts with HBV protein X.,

## Validation Data



Western Blot analysis of HepG2 cells using Phospho-C/EBP  $\alpha$  (T230) Polyclonal Antibody cells nucleus extracted by Minute TM Cytoplasmic and Nuclear Fractionation kit (SC-003, Invent biotech, MN, USA).

## | Contact information

Orders: order.cn@immunoway.com  
Support: support.cn@immunoway.com  
Telephone: 400-8787-807(China)  
Website: <http://www.immunoway.com.cn>  
Address: 2200 Ringwood Ave San Jose, CA 95131 USA



Please scan the QR code to access additional product information:  
**C/EBP  $\alpha$  (Phospho Thr230) Rabbit pAb**

---

For Research Use Only. Not for Use in Diagnostic Procedures.

[Antibody](#) | [ELISA Kits](#) | [Protein](#) | [Reagents](#)