

FGFR1/2 (Phospho Tyr463/466) Rabbit pAb

CatalogNo: YP0452

Key Features

Host Species

- Rabbit

Reactivity

- Human, Mouse, Rat

Applications

- WB, ELISA

MW

- 120kD (Calculated)
full length 120-140kD, FOP-FGFR1
90kD (Observed)

Isotype

- IgG

Storage

Storage* -15°C to -25°C/1 year (Do not lower than -25°C)

Formulation Liquid in PBS containing 50% glycerol, 0.5% BSA and 0.02% sodium azide.

Recommended Dilution Ratios

WB 1:500-1:2000

ELISA 1:10000

Not yet tested in other applications.

Basic Information

Clonality Polyclonal

Immunogen Information

Immunogen Synthesized phospho-peptide around the phosphorylation site of human Flg/Bek (phospho Tyr463/466)

Specificity

This antibody detects endogenous levels of FGF Receptor 1/2 only when phosphorylated at Human:Y463/466, Mouse:Y463/466, Rat:Y463. The name of modified sites may be influenced by many factors, such as species (the modified site was not originally found in human samples) and the change of protein sequence (the previous protein sequence is incomplete, and the protein sequence may be prolonged with the development of protein sequencing technology). When naming, we will use the "numbers" in historical reference to keep the sites consistent with the reports. The antibody binds to the following modification sequence (lowercase letters are modification sites):SEyEL

Target Information

Gene name FGFR1/FGFR2

Protein Name Fibroblast growth factor receptor 1/2

Organism	Gene ID	UniProt ID
Human	2260 ; 2263 ;	P11362 ; P21802 ;
Mouse	14182 ; 14183 ;	P16092 ;
Rat	79114 ;	Q04589 ;

Cellular Localization

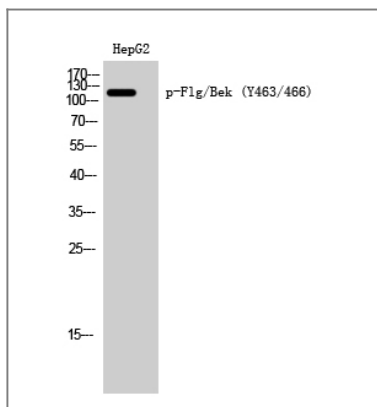
Cell membrane; Single-pass type I membrane protein. Nucleus. Cytoplasm, cytosol. Cytoplasmic vesicle. After ligand binding, both receptor and ligand are rapidly internalized. Can translocate to the nucleus after internalization, or by translocation from the endoplasmic reticulum or Golgi apparatus to the cytosol, and from there to the nucleus.

Tissue specificity Detected in astrocytoma, neuroblastoma and adrenal cortex cell lines. Some isoforms are detected in foreskin fibroblast cell lines, however isoform 17, isoform 18 and isoform 19 are not detected in these cells.

Function

Receptor for basic fibroblast growth factor. Receptor for FGF23 in the presence of KL (By similarity). A shorter form of the receptor could be a receptor for FGF1 (aFGF). Receptor for acidic and basic fibroblast growth factors.

Validation Data



Western Blot analysis of HepG2 cells using Phospho-Flg/Bek (Y463/466) Polyclonal Antibody

Contact information

Orders: order.cn@immunoway.com
Support: support.cn@immunoway.com
Telephone: 400-8787-807(China)
Website: <http://www.immunoway.com.cn>
Address: 2200 Ringwood Ave San Jose, CA 95131 USA



Please scan the QR code to access additional product information:
FGFR1/2 (Phospho Tyr463/466) Rabbit pAb

For Research Use Only. Not for Use in Diagnostic Procedures.

[Antibody](#) | [ELISA Kits](#) | [Protein](#) | [Reagents](#)