

c-Fos (Phospho Ser32) Rabbit pAb

CatalogNo: YP0442

Key Features

Host Species

- Rabbit

Reactivity

- Human, Mouse, Rat

Applications

- WB, ELISA

MW

- 62kD (Observed)

Isotype

- IgG

Storage

Storage* -15°C to -25°C/1 year (Do not lower than -25°C)

Formulation Liquid in PBS containing 50% glycerol, 0.5% BSA and 0.02% sodium azide.

Recommended Dilution Ratios

WB 1:500-1:2000

ELISA 1:5000

Not yet tested in other applications.

Basic Information

Clonality Polyclonal

Immunogen Information

Immunogen The antiserum was produced against synthesized peptide derived from human FOS around the phosphorylation site of Ser32. AA range:15-64

Specificity Phospho-c-Fos (S32) Polyclonal Antibody detects endogenous levels of c-Fos protein only when phosphorylated at S32. The name of modified sites may be influenced by many factors, such as species (the modified site was not originally found in human samples) and the change of protein sequence (the previous protein sequence is incomplete, and the protein sequence may be prolonged with the development of protein sequencing technology). When naming, we will use the "numbers" in historical reference to keep the sites consistent with the reports. The antibody binds to the following modification sequence (lowercase letters are modification sites):YHsPA

Target Information

Gene name FOS

Protein Name Proto-oncogene c-Fos

Organism	Gene ID	UniProt ID
Human	2353 ;	P01100 ;
Mouse	14281 ;	P01101 ;
Rat	140675 ;	P12841 ;

Cellular Localization

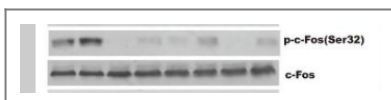
Nucleus. Endoplasmic reticulum. Cytoplasm , cytosol. In quiescent cells , present in very small amounts in the cytosol. Following induction of cell growth , first localizes to the endoplasmic reticulum and only later to the nucleus. Localization at the endoplasmic reticulum requires dephosphorylation at Tyr-10 and Tyr-30.

Tissue specificity Lung adenocarcinoma ,Pancreas ,Tongue ,

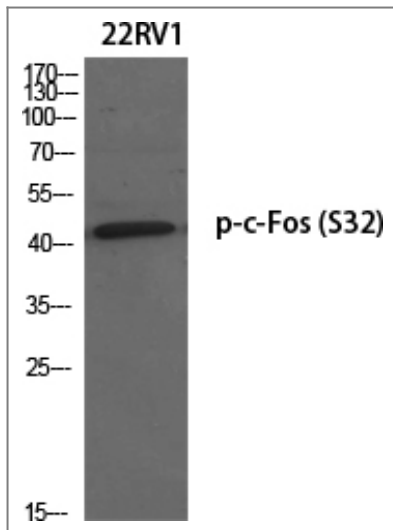
Function

Function:Nuclear phosphoprotein which forms a tight but non-covalently linked complex with the JUN/AP-1 transcription factor. In the heterodimer , c-fos and JUN/AP-1 basic regions each seems to interact with symmetrical DNA half sites. Has a critical function in regulating the development of cells destined to form and maintain the skeleton. It is thought to have an important role in signal transduction , cell proliferation and differentiation. ,PTM:Constitutively sumoylated by SUMO1 , SUMO2 and SUMO3. Desumoylated by SENP2. Sumoylation requires heterodimerization with JUN and is enhanced by mitogen stimulation. Sumoylation inhibits the AP-1 transcriptional activity and is , itself , inhibited by Ras-activated phosphorylation on Thr-232. ,PTM:Phosphorylated in the C-terminal upon stimulation by nerve growth factor (NGF) and epidermal growth factor (EGF) . Phosphorylated , in vitro , by MAPK and RSK1. Phosphorylation on both Ser-362 and Ser-374 by MAPK1/2 and RSK1/2 leads to protein stabilization with phosphorylation on Ser-374 being the major site for protein stabilization on NGF stimulation. Phosphorylation on Ser-362 and Ser-374 primes further phosphorylations on Thr-325 and Thr-331 through promoting docking of MAPK to the DEF domain. Phosphorylation on Thr-232 , induced by HA-RAS , activates the transcriptional activity and antagonizes sumoylation. Phosphorylation on Ser-362 by RSK2 in osteoblasts contributes to osteoblast transformation. ,similarity:Belongs to the bZIP family. ,similarity:Belongs to the bZIP family. Fos subfamily. ,similarity:Contains 1 bZIP domain. ,subunit:Heterodimer with JUN. Interacts with DSIPI; this interaction inhibits the binding of active AP1 to its target DNA. Interacts with MAFB. ,

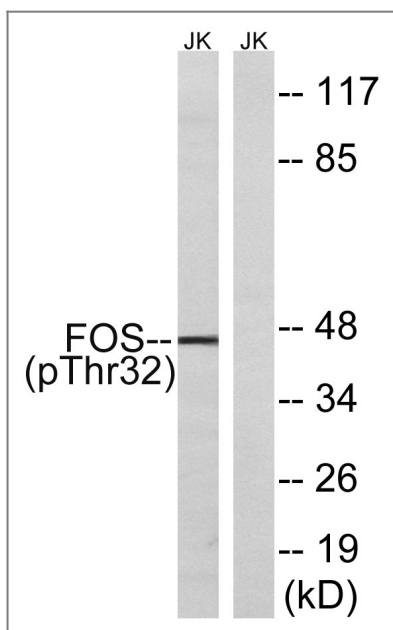
Validation Data



Xu, Wanfu, et al. "Protein kinase Ds promote tumor angiogenesis through mast cell recruitment and expression of angiogenic factors in prostate cancer microenvironment." *Journal of Experimental & Clinical Cancer Research* 38.1 (2019): 114.



Western Blot analysis of various cells using Phospho-c-Fos (S32) Polyclonal Antibody diluted at 1:500 cells nucleus extracted by Minute TM Cytoplasmic and Nuclear Fractionation kit (SC-003, Invent biotech, MN, USA).



Western blot analysis of lysates from Jurkat cells treated with starved 24h, using FOS (Phospho-Ser32) Antibody. The lane on the right is blocked with the phospho peptide.

Contact information

Orders: order.cn@immunoway.com
 Support: support.cn@immunoway.com
 Telephone: 400-8787-807(China)
 Website: <http://www.immunoway.com.cn>
 Address: 2200 Ringwood Ave San Jose, CA 95131 USA



Please scan the QR code to access additional product information:
c-Fos (Phospho Ser32) Rabbit pAb