

## PKCB (Phospho Ser661) Rabbit pAb

CatalogNo: YP0432 **Orthogonal Validated** 

### Key Features

#### Host Species

- Rabbit

#### Reactivity

- Human, Mouse, Rat

#### Applications

- WB, IHC, IF, ELISA

#### MW

- 77kD (Observed)

#### Isotype

- IgG

### Storage

**Storage\*** -15°C to -25°C/1 year (Do not lower than -25°C)**Formulation** Liquid in PBS containing 50% glycerol, 0.5% BSA and 0.02% sodium azide.

### Recommended Dilution Ratios

**WB 1:500-1:2000****IHC 1:100-1:300****ELISA 1:20000****IF 1:50-200**

### Basic Information

**Clonality** Polyclonal

### Immunogen Information

**Immunogen** The antiserum was produced against synthesized peptide derived from human PKCB around the phosphorylation site of Ser661. AA range: 622-671

## Specificity

Phospho-PKC  $\beta$  (S661) Polyclonal Antibody detects endogenous levels of PKC  $\beta$  protein only when phosphorylated at S661. The name of modified sites may be influenced by many factors, such as species (the modified site was not originally found in human samples) and the change of protein sequence (the previous protein sequence is incomplete, and the protein sequence may be prolonged with the development of protein sequencing technology). When naming, we will use the "numbers" in historical reference to keep the sites consistent with the reports. The antibody binds to the following modification sequence (lowercase letters are modification sites):GFsYT

## Target Information

**Gene name** PRKCB

**Protein Name** Protein kinase C beta type

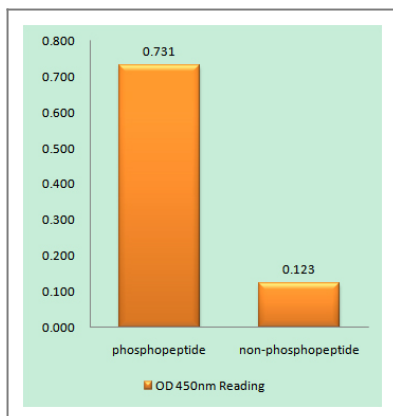
Organism	Gene ID	UniProt ID
Human	<a href="#">5579</a> ;	<a href="#">P05771</a> ;
Mouse	<a href="#">18751</a> ;	<a href="#">P68404</a> ;
Rat	<a href="#">25023</a> ;	<a href="#">P68403</a> ;

**Cellular Localization** Cytoplasm . Nucleus . Membrane ; Peripheral membrane protein .

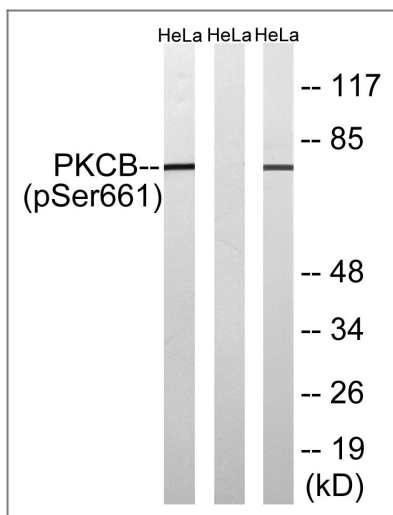
**Tissue specificity** Fetal brain,Hippocampus,Platelet,

**Function** Catalytic activity:ATP + a protein = ADP + a phosphoprotein.,cofactor:Binds 3 calcium ions per subunit. The ions are bound to the C2 domain.,Function:This is a calcium-activated, phospholipid-dependent, serine- and threonine-specific enzyme. PKC is activated by diacylglycerol which in turn phosphorylates a range of cellular proteins. PKC also serves as the receptor for phorbol esters, a class of tumor promoters. May be considered as a novel component of the NF-kappa-B signaling axis responsible for the survival and activation of B-cells after BCR cross-linking.,PTM:Phosphorylation on Thr-500 of isoform beta-I, within the activation loop, renders it competent to autophosphorylate. Subsequent autophosphorylation of Thr-642 maintains catalytic competence, and autophosphorylation on Ser-661 appears to release the kinase into the cytosol. Similarly, isoform beta-II is autophosphorylated on 'Thr-640' and 'Ser-659', subsequent to phosphorylation on Thr-500. Autophosphorylated on other sites i.e. in the N-terminal and hinge regions have no effect on PKC activity.,similarity:Belongs to the protein kinase superfamily. AGC Ser/Thr protein kinase family. PKC subfamily.,similarity:Contains 1 AGC-kinase C-terminal domain.,similarity:Contains 1 C2 domain.,similarity:Contains 1 protein kinase domain.,similarity:Contains 2 phorbol-ester/DAG-type zinc fingers.,subunit:Interacts with PDK1 (By similarity). Interacts in vitro with PRKCBP1.,

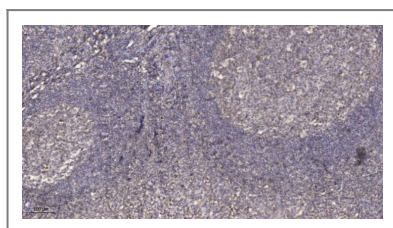
## Validation Data



Enzyme-Linked Immunosorbent Assay (Phospho-ELISA) for Immunogen Phosphopeptide (Phospho-left) and Non-Phosphopeptide (Phospho-right), using PKCB (Phospho-Ser661) Antibody



Western blot analysis of lysates from HeLa cells treated with heat shock, using PKCB (Phospho-Ser661) Antibody. The lane on the right is blocked with the phospho peptide.



Immunohistochemical analysis of paraffin-embedded human tonsil. 1, Antibody was diluted at 1:200(4° overnight). 2, Tris-EDTA,pH9.0 was used for antigen retrieval. 3,Secondary antibody was diluted at 1:200(room temperature, 45min).

## Contact information

Orders: order.cn@immunoway.com  
 Support: support.cn@immunoway.com  
 Telephone: 400-8787-807(China)  
 Website: <http://www.immunoway.com.cn>  
 Address: 2200 Ringwood Ave San Jose, CA 95131 USA



Please scan the QR code to access additional product information:  
**PKCB (Phospho Ser661) Rabbit pAb**