

## p70 S6 kinase $\beta$ (Phospho Ser423) Rabbit pAb

CatalogNo: YP0428 **Orthogonal Validated** 

### Key Features

#### Host Species

- Rabbit

#### Reactivity

- Human, Mouse

#### Applications

- WB, ELISA

#### MW

- 53kD (Observed)

#### Isotype

- IgG

### Storage

**Storage\*** -15°C to -25°C/1 year (Do not lower than -25°C)

**Formulation** Liquid in PBS containing 50% glycerol, 0.5% BSA and 0.02% sodium azide.

### Recommended Dilution Ratios

**WB 1:500-1:2000**

**ELISA 1:5000**

**Not yet tested in other applications.**

### Basic Information

**Clonality** Polyclonal

### Immunogen Information

**Immunogen** The antiserum was produced against synthesized peptide derived from human p70 S6 Kinase beta around the phosphorylation site of Ser423. AA range:389-438

## Specificity

Phospho-p70 S6 kinase  $\beta$  (S423) Polyclonal Antibody detects endogenous levels of p70 S6 kinase  $\beta$  protein only when phosphorylated at S423. The name of modified sites may be influenced by many factors, such as species (the modified site was not originally found in human samples) and the change of protein sequence (the previous protein sequence is incomplete, and the protein sequence may be prolonged with the development of protein sequencing technology). When naming, we will use the "numbers" in historical reference to keep the sites consistent with the reports. The antibody binds to the following modification sequence (lowercase letters are modification sites):PVsPL

## Target Information

**Gene name** RPS6KB2

**Protein Name** Ribosomal protein S6 kinase beta-2

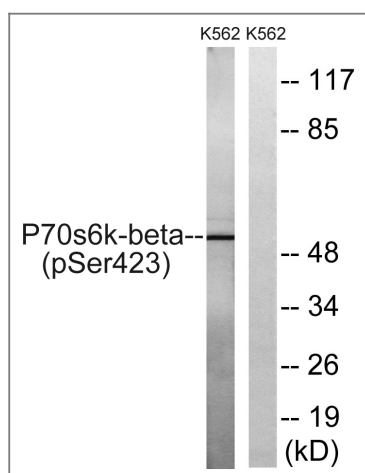
Organism	Gene ID	UniProt ID
Human	<a href="#">6199</a> ;	<a href="#">Q9UBS0</a> ;
Mouse	<a href="#">58988</a> ;	<a href="#">Q9Z1M4</a> ;

**Cellular Localization** Cytoplasm. Nucleus.

**Tissue specificity** Brain ,Epithelium ,Lymph ,

**Function** Catalytic activity:ATP + a protein = ADP + a phosphoprotein. ,Function:Phosphorylates specifically ribosomal protein S6. ,PTM:Phosphorylated upon DNA damage , probably by ATM or ATR. ,similarity:Belongs to the protein kinase superfamily. ,similarity:Belongs to the protein kinase superfamily. AGC Ser/Thr protein kinase family. S6 kinase subfamily. ,similarity:Contains 1 AGC-kinase C-terminal domain. ,similarity:Contains 1 protein kinase domain. ,

## Validation Data



Western blot analysis of lysates from K562 cells treated with EGF 200ng/ml 5', using p70 S6 Kinase beta (Phospho-Ser423) Antibody. The lane on the right is blocked with the phospho peptide.

## | Contact information

Orders: order.cn@immunoway.com  
Support: support.cn@immunoway.com  
Telephone: 400-8787-807(China)  
Website: <http://www.immunoway.com.cn>  
Address: 2200 Ringwood Ave San Jose, CA 95131 USA



Please scan the QR code to access additional product information:  
**p70 S6 kinase  $\beta$**   
**(Phospho Ser423)**  
**Rabbit pAb**

---

For Research Use Only. Not for Use in Diagnostic Procedures.

[Antibody](#) | [ELISA Kits](#) | [Protein](#) | [Reagents](#)