

MNK1 (Phospho Thr255) Rabbit pAb

CatalogNo: YP0427 **Orthogonal Validated** 

Key Features

Host Species

- Rabbit

Reactivity

- Human, Mouse, Rat

Applications

- WB, IHC, ELISA

MW

- 60kD (Observed)

Isotype

- IgG

Storage

Storage* -15°C to -25°C/1 year (Do not lower than -25°C)

Formulation Liquid in PBS containing 50% glycerol, 0.5% BSA and 0.02% sodium azide.

Recommended Dilution Ratios

WB 1:500-2000

IHC 1:50-300

ELISA :5000-1:20000

Basic Information

Clonality Polyclonal

Immunogen Information

Immunogen The antiserum was produced against synthesized peptide derived from human MNK1 around the phosphorylation site of Thr255. AA range:221-270

Specificity Phospho-MNK1 (T255) Polyclonal Antibody detects endogenous levels of MNK1 protein only when phosphorylated at T255. The name of modified sites may be influenced by many factors, such as species (the modified site was not originally found in human samples) and the change of protein sequence (the previous protein sequence is incomplete, and the protein sequence may be prolonged with the development of protein sequencing technology). When naming, we will use the "numbers" in historical reference to keep the sites consistent with the reports. The antibody binds to the following modification sequence (lowercase letters are modification sites):LTtPC

Target Information

Gene name MKNK1

Protein Name MAP kinase-interacting serine/threonine-protein kinase 1

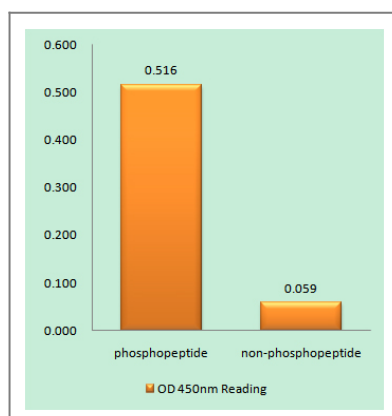
Organism	Gene ID	UniProt ID
Human	8569 ;	Q9BUB5 ;
Mouse	17346 ;	O08605 ;
Rat	500526 ;	Q4G050 ;

Cellular Localization [Isoform 2]: Cytoplasm.; [Isoform 3]: Cytoplasm. Nucleus.

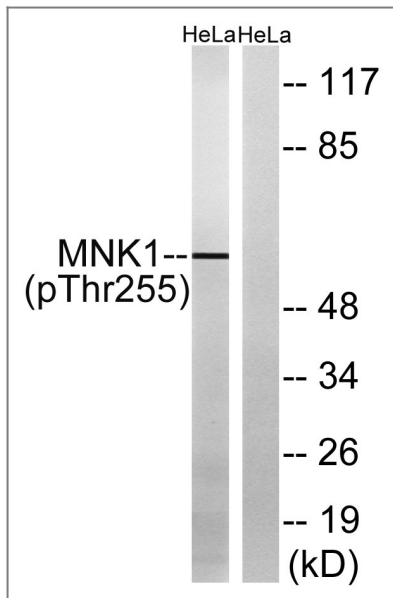
Tissue specificity Ubiquitous.

Function Catalytic activity:ATP + a protein = ADP + a phosphoprotein.,cofactor:Magnesium.,enzyme regulation:Phosphorylated and activated by the p38 kinases and kinases in the Erk pathway.,Function:May play a role in the response to environmental stress and cytokines. Appears to regulate transcription by phosphorylating EIF4E, thus increasing the affinity of this protein for the 7-methylguanosine-containing mRNA cap.,PTM: Dual phosphorylation of Thr-250 and Thr-255 activates the kinase. Phosphorylation of Thr-385 activates the kinase.,similarity:Belongs to the protein kinase superfamily.,similarity:Belongs to the protein kinase superfamily. CAMK Ser/Thr protein kinase family.,similarity:Contains 1 protein kinase domain.,subunit:Interacts with the C-terminal regions of EIF4G1 and EIF4G2. Also binds to dephosphorylated ERK1 and ERK2, and to the p38 kinases.,tissue specificity:Ubiquitous.,

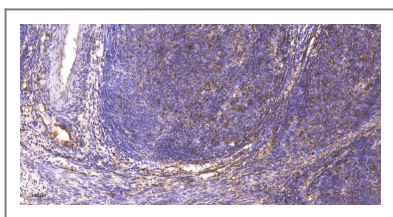
Validation Data



Enzyme-Linked Immunosorbent Assay (Phospho-ELISA) for Immunogen Phosphopeptide (Phospho-left) and Non-Phosphopeptide (Phospho-right), using MNK1 (Phospho-Thr255) Antibody



Western blot analysis of lysates from HeLa cells treated with Adriamycin 0.5ug/ml 24h, using MNK1 (Phospho-Thr255) Antibody. The lane on the right is blocked with the phospho peptide.



Immunohistochemical analysis of paraffin-embedded human cervical carcinoma. 1, Antibody was diluted at 1:200(4° overnight). 2, Tris-EDTA,pH9.0 was used for antigen retrieval. 3,Secondary antibody was diluted at 1:200(room temperature, 45min).

Contact information

Orders: order.cn@immunoway.com
 Support: support.cn@immunoway.com
 Telephone: 400-8787-807(China)
 Website: <http://www.immunoway.com.cn>
 Address: 2200 Ringwood Ave San Jose, CA 95131 USA



Please scan the QR code to access additional product information:
MNK1 (Phospho Thr255) Rabbit pAb

For Research Use Only. Not for Use in Diagnostic Procedures.

[Antibody](#) | [ELISA Kits](#) | [Protein](#) | [Reagents](#)