

WRN (Phospho Ser1141) Rabbit pAb

CatalogNo: YP0401 **Orthogonal Validated** 

Key Features

Host Species

- Rabbit

Reactivity

- Human, Mouse, Rat

Applications

- WB, ELISA

MW

- 162kD (Observed)

Isotype

- IgG

Storage

Storage* -15°C to -25°C/1 year (Do not lower than -25°C)

Formulation Liquid in PBS containing 50% glycerol, 0.5% BSA and 0.02% sodium azide.

Recommended Dilution Ratios

WB 1:500-1:2000

ELISA 1:5000

Not yet tested in other applications.

Basic Information

Clonality Polyclonal

Immunogen Information

Immunogen The antiserum was produced against synthesized peptide derived from human Werner Syndrome Helicase around the phosphorylation site of Ser1141. AA range:1107-1156

Specificity Phospho-WRN (S1141) Polyclonal Antibody detects endogenous levels of WRN protein only when phosphorylated at S1141. The name of modified sites may be influenced by many factors, such as species (the modified site was not originally found in human samples) and the change of protein sequence (the previous protein sequence is incomplete, and the protein sequence may be prolonged with the development of protein sequencing technology). When naming, we will use the "numbers" in historical reference to keep the sites consistent with the reports. The antibody binds to the following modification sequence (lowercase letters are modification sites):SSsQP

Target Information

Gene name WRN RECQ3 RECQL2

Protein Name Werner syndrome ATP-dependent helicase

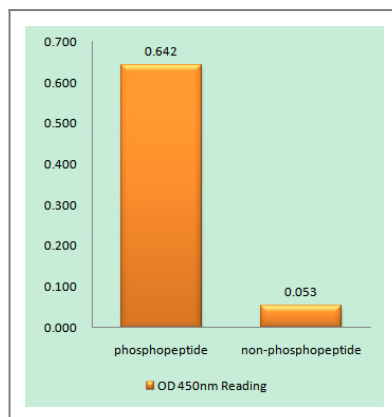
Organism	Gene ID	UniProt ID
Human	7486 ;	Q14191 ;
Mouse	22427 ;	O09053 ;

Cellular Localization Nucleus, nucleolus . Nucleus . Nucleus, nucleoplasm . Chromosome . Gamma-irradiation leads to its translocation from nucleoli to nucleoplasm and PML regulates the irradiation-induced WRN relocation (PubMed:21639834). Localizes to DNA damage sites (PubMed:27063109). .

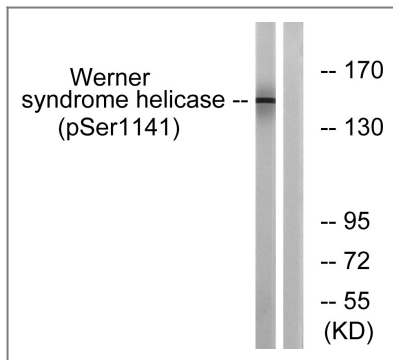
Tissue specificity Spleen,

Function Disease:Defects in WRN are a cause of Werner syndrome (WRN) [MIM:277700]. WRN is a rare autosomal recessive progeroid syndrome characterized by the premature onset of multiple age-related disorders, including atherosclerosis, cancer, non-insulin-dependent diabetes mellitus, ocular cataracts and osteoporosis. The major cause of death, at a median age of 47, is myocardial infarction. Currently all known WS mutations produces prematurely terminated proteins.,Disease:Defects in WRN may be a cause of colorectal cancer (CRC) [MIM:114500].,Function:Essential for the formation of DNA replication focal centers; stably associates with foci elements generating binding sites for RP-A. Exhibits a magnesium-dependent ATP-dependent DNA-helicase activity. May be involved in the control of genomic stability.,online information:WRN mutation db (Warner disease),PTM:Phosphorylated by PRKDC. Phosphorylated upon DNA damage, probably by ATM or ATR.,similarity:Belongs to the helicase family. RecQ subfamily.,similarity:Contains 1 3'-5' exonuclease domain.,similarity:Contains 1 helicase ATP-binding domain.,similarity:Contains 1 helicase C-terminal domain.,similarity:Contains 1 HRDC domain.,subunit:Interacts via its N-terminal domain with WRNIP1 (By similarity). Interacts with EXO1.,

Validation Data



Enzyme-Linked Immunosorbent Assay (Phospho-ELISA) for Immunogen Phosphopeptide (Phospho-left) and Non-Phosphopeptide (Phospho-right), using Werner Syndrome Helicase (Phospho-Ser1141) Antibody



Western blot analysis of lysates from K562 cells treated with etoposide 25uM 24h, using Werner Syndrome Helicase (Phospho-Ser1141) Antibody. The lane on the right is blocked with the phospho peptide.

Contact information

Orders: order.cn@immunoway.com
Support: support.cn@immunoway.com
Telephone: 400-8787-807(China)
Website: <http://www.immunoway.com.cn>
Address: 2200 Ringwood Ave San Jose, CA 95131 USA



Please scan the QR code to access additional product information:
WRN (Phospho Ser1141) Rabbit pAb

For Research Use Only. Not for Use in Diagnostic Procedures.

[Antibody](#) | [ELISA Kits](#) | [Protein](#) | [Reagents](#)