

## STAM2 (Phospho Tyr192) Rabbit pAb

CatalogNo: YP0399 **Orthogonal Validated** 

### Key Features

#### Host Species

- Rabbit

#### Reactivity

- Human, Mouse

#### Applications

- WB, IHC, IF, ELISA

#### MW

- 58kD (Observed)

#### Isotype

- IgG

### Storage

**Storage\*** -15°C to -25°C/1 year (Do not lower than -25°C)

**Formulation** Liquid in PBS containing 50% glycerol, 0.5% BSA and 0.02% sodium azide.

### Recommended Dilution Ratios

**WB 1:500-1:2000**

**IHC 1:100-1:300**

**ELISA 1:10000**

**IF 1:50-200**

### Basic Information

**Clonality** Polyclonal

### Immunogen Information

**Immunogen** The antiserum was produced against synthesized peptide derived from human STAM2 around the phosphorylation site of Tyr192. AA range:161-210

## Specificity

Phospho-STAM2 (Y192) Polyclonal Antibody detects endogenous levels of STAM2 protein only when phosphorylated at Y192. The name of modified sites may be influenced by many factors, such as species (the modified site was not originally found in human samples) and the change of protein sequence (the previous protein sequence is incomplete, and the protein sequence may be prolonged with the development of protein sequencing technology). When naming, we will use the "numbers" in historical reference to keep the sites consistent with the reports. The antibody binds to the following modification sequence (lowercase letters are modification sites):SLyPS

## Target Information

**Gene name** STAM2

**Protein Name** Signal transducing adapter molecule 2

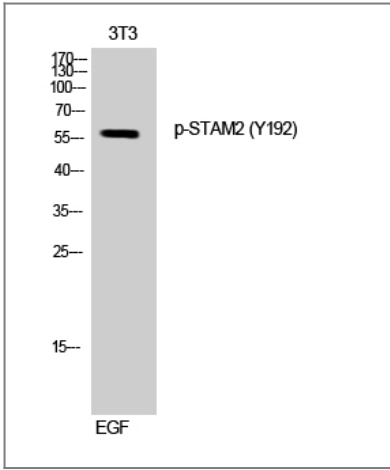
Organism	Gene ID	UniProt ID
Human	<a href="#">10254</a> ;	<a href="#">O75886</a> ;
Mouse	<a href="#">56324</a> ;	<a href="#">O88811</a> ;

**Cellular Localization** Cytoplasm . Early endosome membrane ; Peripheral membrane protein ; Cytoplasmic side .

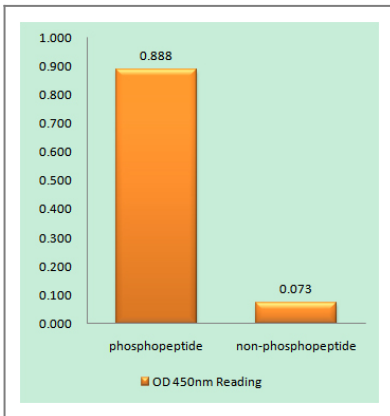
**Tissue specificity** Ubiquitously expressed.

**Function** Domain:Contains one Pro-Xaa-Val-Xaa-Leu (PxVxL) motif, which is required for interaction with chromoshadow domains. This motif requires additional residues -7, -6, +4 and +5 of the central Val which contact the chromoshadow domain.,Domain:The SH3 domain mediates the interaction with USP8.,Domain:The VHS and UIM domains mediate the interaction with ubiquitinated proteins.,Function:Involved in intracellular signal transduction mediated by cytokines and growth factors. Upon IL-2 and GM-CSF stimulation, it plays a role in signaling leading to DNA synthesis and c-myc induction. May also play a role in T-cell development. Involved in down-regulation of receptor tyrosine kinase via multivesicular body (MVBs) when complexed with HGS (ESCRT-0 complex). The ESCRT-0 complex binds ubiquitin and acts as sorting machinery that recognizes ubiquitinated receptors and transfers them to further sequential lysosomal sorting/trafficking processes.,PTM:Phosphorylated in response to IL-2, GM-CSF, EGF and PDGF.,similarity:Belongs to the STAM family.,similarity:Contains 1 ITAM domain.,similarity:Contains 1 SH3 domain.,similarity:Contains 1 UIM (ubiquitin-interacting motif) repeat.,similarity:Contains 1 VHS domain.,subunit:Component of the ESCRT-0 complex composed of STAM or STAM2 and HGS. Part of a complex at least composed of HSG, STAM2 and EPS15. Interacts with JAK2 and JAK3. Interacts with ubiquitinated proteins and the deubiquitinating enzyme USP8/UBPY (By similarity). Interacts (via the via the PxVxL motif) with CBX5; the interaction is direct. Interacts with VPS37C. Interacts with ubiquitin; the interaction is direct.,tissue specificity:Ubiquitously expressed.,

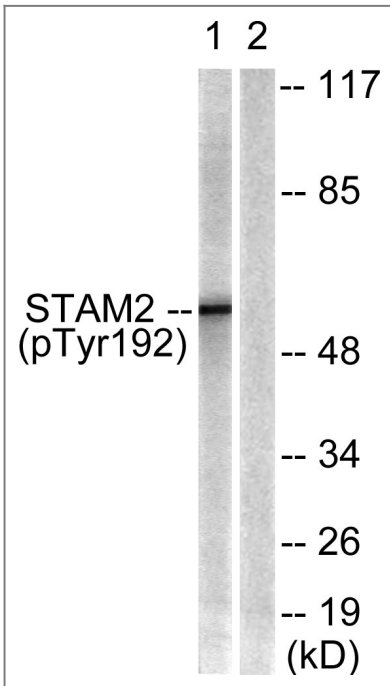
## Validation Data



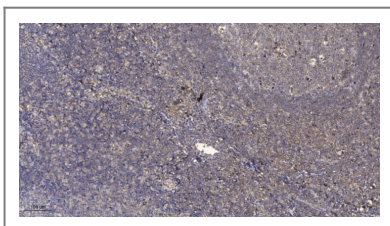
Western Blot analysis of 3T3 cells using Phospho-STAM2 (Y192) Polyclonal Antibody



Enzyme-Linked Immunosorbent Assay (Phospho-ELISA) for Immunogen Phosphopeptide (Phospho-left) and Non-Phosphopeptide (Phospho-right), using STAM2 (Phospho-Tyr192) Antibody



Western blot analysis of lysates from NIH/3T3 cells treated with EGF 200ng/ml 30', using STAM2 (Phospho-Tyr192) Antibody. The lane on the right is blocked with the phospho peptide.



Immunohistochemical analysis of paraffin-embedded human tonsil. 1, Antibody was diluted at 1:200(4° overnight). 2, Tris-EDTA,pH9.0 was used for antigen retrieval. 3,Secondary antibody was diluted at 1:200(room temperature, 30min).

## | Contact information

Orders: order.cn@immunoway.com  
Support: support.cn@immunoway.com  
Telephone: 400-8787-807(China)  
Website: <http://www.immunoway.com.cn>  
Address: 2200 Ringwood Ave San Jose, CA 95131 USA



Please scan the QR code to access additional product information:  
**STAM2 (Phospho Tyr192) Rabbit pAb**

---

For Research Use Only. Not for Use in Diagnostic Procedures.

[Antibody](#) | [ELISA Kits](#) | [Protein](#) | [Reagents](#)