

Casein Kinase I α (Phospho Thr321) Rabbit pAb

CatalogNo: YP0392

Key Features

Host Species

- Rabbit

Reactivity

- Human, Mouse, Rat

Applications

- WB, IHC, IF, ELISA

MW

- 35kD (Observed)

Isotype

- IgG

Storage

Storage* -15°C to -25°C/1 year (Do not lower than -25°C)

Formulation Liquid in PBS containing 50% glycerol, 0.5% BSA and 0.02% sodium azide.

Recommended Dilution Ratios

WB 1:500-1:2000

IHC 1:100-1:300

ELISA 1:5000

IF 1:50-200

Basic Information

Clonality Polyclonal

Immunogen Information

Immunogen The antiserum was produced against synthesized peptide derived from human Casein Kinase I alpha around the phosphorylation site of Tyr321. AA range: 287-336

Specificity

Phospho-Casein Kinase I α (Y321) Polyclonal Antibody detects endogenous levels of Casein Kinase I α protein only when phosphorylated at Y321. The name of modified sites may be influenced by many factors, such as species (the modified site was not originally found in human samples) and the change of protein sequence (the previous protein sequence is incomplete, and the protein sequence may be prolonged with the development of protein sequencing technology). When naming, we will use the "numbers" in historical reference to keep the sites consistent with the reports. The antibody binds to the following modification sequence (lowercase letters are modification sites):AQtPT

| Target Information

Gene name CSNK1A1

Protein Name Casein kinase I isoform alpha

Organism	Gene ID	UniProt ID
Human	1452;	P48729;
Mouse		Q8BK63;
Rat	113927;	P97633;

Cellular Localization

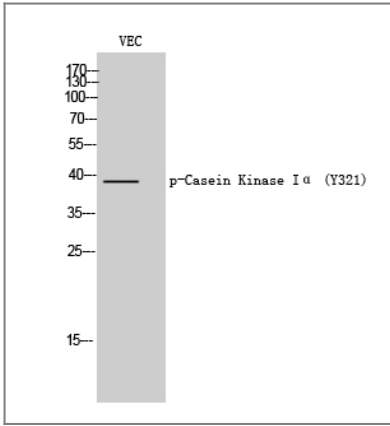
Cytoplasm . Cytoplasm, cytoskeleton, microtubule organizing center, centrosome . Chromosome, centromere, kinetochore . Nucleus speckle . Cytoplasm, cytoskeleton, cilium basal body . Cytoplasm, cytoskeleton, spindle . Localizes to the centrosome in interphase cells, and to kinetochore fibers during mitosis. Also recruited to the keratin cytoskeleton (PubMed:23902688). .

Tissue specificity Brain,Epithelium,Liver,Lung,Placenta,Skin,

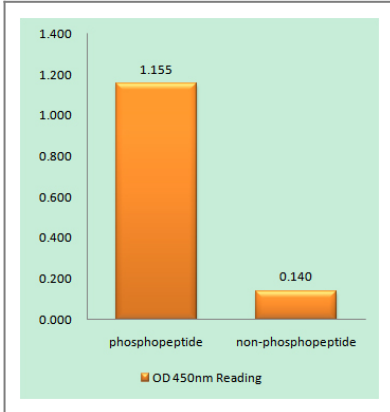
Function

Catalytic activity:ATP + a protein = ADP + a phosphoprotein.,Function:Casein kinases are operationally defined by their preferential utilization of acidic proteins such as caseins as substrates. It can phosphorylate a large number of proteins. Participates in Wnt signaling. Phosphorylates CTNNB1 on 'Ser-45'.,similarity:Belongs to the protein kinase superfamily.,similarity:Belongs to the protein kinase superfamily. CK1 Ser/Thr protein kinase family. Casein kinase I subfamily.,similarity:Contains 1 protein kinase domain.,subunit:Monomer. Interacts with the Axin complex.,

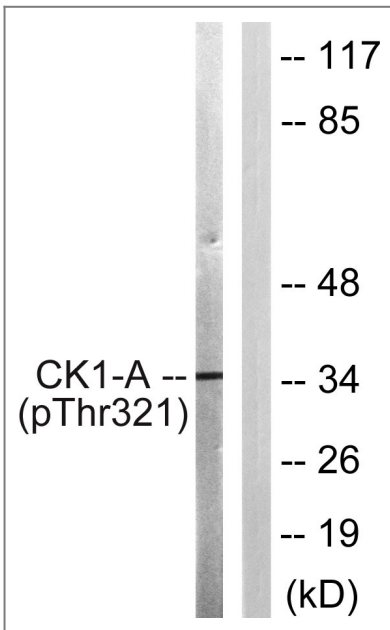
| Validation Data



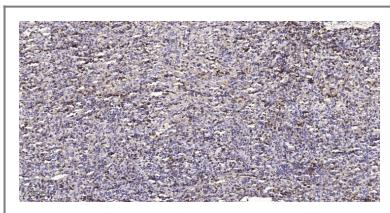
Western Blot analysis of VEC cells using Phospho-Casein Kinase I α (Y321) Polyclonal Antibody



Enzyme-Linked Immunosorbent Assay (Phospho-ELISA) for Immunogen Phosphopeptide (Phospho-left) and Non-Phosphopeptide (Phospho-right), using Casein Kinase I alpha (Phospho-Tyr321) Antibody



Western blot analysis of lysates from HUVEC cells, using Casein Kinase I alpha (Phospho-Tyr321) Antibody. The lane on the right is blocked with the phospho peptide.



Immunohistochemical analysis of paraffin-embedded human spleen tissue. 1,primary Antibody was diluted at 1:200(4° overnight). 2, Sodium citrate pH 6.0 was used for antigen retrieval(>98°C,20min). 3,Secondary antibody was diluted at 1:200

Contact information

Orders: order.cn@immunoway.com
Support: support.cn@immunoway.com
Telephone: 400-8787-807(China)
Website: <http://www.immunoway.com.cn>
Address: 2200 Ringwood Ave San Jose, CA 95131 USA



Please scan the QR code
to access additional
product information:
Casein Kinase I α
(Phospho Thr321)
Rabbit pAb

For Research Use Only. Not for Use in Diagnostic Procedures.

[Antibody](#) | [ELISA Kits](#) | [Protein](#) | [Reagents](#)