

## TIS11B (Phospho Ser92) Rabbit pAb

CatalogNo: YP0389

### Key Features

#### Host Species

- Rabbit

#### Reactivity

- Human, Mouse, Rat

#### Applications

- WB, ELISA, IHC

#### MW

- 36kD (Observed)

#### Isotype

- IgG

### Storage

**Storage\*** -15°C to -25°C/1 year (Do not lower than -25°C)

**Formulation** Liquid in PBS containing 50% glycerol, 0.5% BSA and 0.02% sodium azide.

### Recommended Dilution Ratios

**WB 1:500-2000**

**IHC 1:50-300**

**ELISA 1:2000-20000**

### Basic Information

**Clonality** Polyclonal

### Immunogen Information

**Immunogen** The antiserum was produced against synthesized peptide derived from human TISB around the phosphorylation site of Ser92. AA range: 58-107

**Specificity** Phospho-TIS11B (S92) Polyclonal Antibody detects endogenous levels of TIS11B protein only when phosphorylated at S92. The name of modified sites may be influenced by many factors, such as species (the modified site was not originally found in human samples) and the change of protein sequence (the previous protein sequence is incomplete, and the protein sequence may be prolonged with the development of protein sequencing technology). When naming, we will use the "numbers" in historical reference to keep the sites consistent with the reports. The antibody binds to the following modification sequence (lowercase letters are modification sites): SFsEG

## Target Information

**Gene name** ZFP36L1

**Protein Name** Zinc finger protein 36 C3H1 type-like 1

Organism	Gene ID	UniProt ID
Human	<a href="#">677</a> ;	<a href="#">Q07352</a> ;
Mouse	<a href="#">12192</a> ;	<a href="#">P23950</a> ;
Rat	<a href="#">29344</a> ;	<a href="#">P17431</a> ;

**Cellular Localization**

Nucleus . Cytoplasm . Cytoplasmic granule . Cytoplasm, P-body . Shuttles between the nucleus and the cytoplasm in a XPO1/CRM1-dependent manner (By similarity). Component of cytoplasmic stress granules (PubMed:15967811). Localizes in processing bodies (PBs) (PubMed:17369404). .

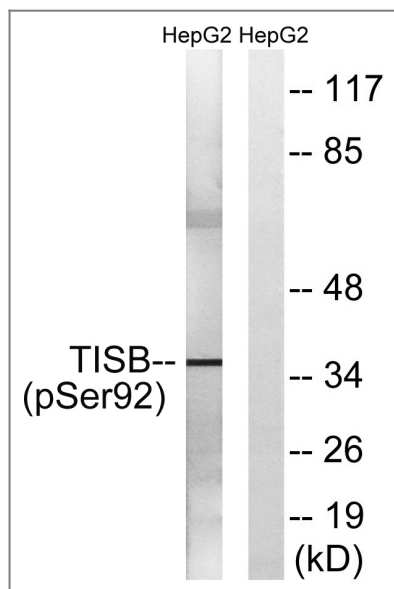
**Tissue specificity**

Expressed mainly in the basal epidermal layer, weakly in the suprabasal epidermal layers (PubMed:27182009). Expressed in epidermal keratinocytes (at protein level) (PubMed:27182009). Expressed in osteoblasts (PubMed:15465005).

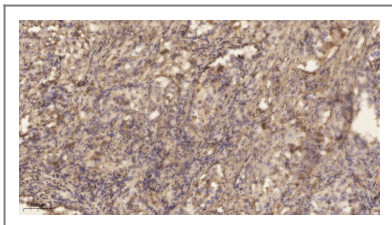
**Function**

Function:Probable regulatory protein involved in regulating the response to growth factors.,similarity:Contains 2 C3H1-type zinc fingers.,

## Validation Data



Western blot analysis of lysates from HepG2 cells, using TISB (Phospho-Ser92) Antibody. The lane on the right is blocked with the phospho peptide.



Immunohistochemical analysis of paraffin-embedded human lung cancer. 1, Antibody was diluted at 1:200(4° overnight). 2, Tris-EDTA,pH9.0 was used for antigen retrieval. 3,Secondary antibody was diluted at 1:200(room temperature, 45min).

## | Contact information

Orders: order.cn@immunoway.com  
Support: support.cn@immunoway.com  
Telephone: 400-8787-807(China)  
Website: <http://www.immunoway.com.cn>  
Address: 2200 Ringwood Ave San Jose, CA 95131 USA



Please scan the QR code to access additional product information:  
**TIS11B (Phospho Ser92) Rabbit pAb**

---

For Research Use Only. Not for Use in Diagnostic Procedures.

[Antibody](#) | [ELISA Kits](#) | [Protein](#) | [Reagents](#)