

## NIPA (Phospho Ser354) Rabbit pAb

CatalogNo: YP0385 **Orthogonal Validated** 

### Key Features

#### Host Species

- Rabbit

#### Reactivity

- Human, Mouse, Rat, Monkey

#### Applications

- WB, IF, ELISA

#### MW

- 55kD (Observed)

#### Isotype

- IgG

### Storage

**Storage\*** -15°C to -25°C/1 year (Do not lower than -25°C)

**Formulation** Liquid in PBS containing 50% glycerol, 0.5% BSA and 0.02% sodium azide.

### Recommended Dilution Ratios

**WB 1:500-1:2000**

**IF 1:200-1:1000**

**ELISA 1:40000**

**Not yet tested in other applications.**

### Basic Information

**Clonality** Polyclonal

### Immunogen Information

**Immunogen** The antiserum was produced against synthesized peptide derived from human NIPA around the phosphorylation site of Ser354. AA range:320-369

**Specificity**

Phospho-NIPA (S354) Polyclonal Antibody detects endogenous levels of NIPA protein only when phosphorylated at S354. The name of modified sites may be influenced by many factors, such as species (the modified site was not originally found in human samples) and the change of protein sequence (the previous protein sequence is incomplete, and the protein sequence may be prolonged with the development of protein sequencing technology). When naming, we will use the "numbers" in historical reference to keep the sites consistent with the reports. The antibody binds to the following modification sequence (lowercase letters are modification sites): TRSWD

**| Target Information**

**Gene name** ZC3HC1

**Protein Name** Nuclear-interacting partner of ALK

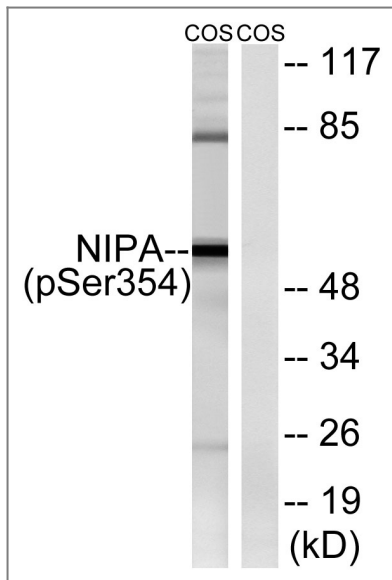
Organism	Gene ID	UniProt ID
Human	<a href="#">51530</a> ;	<a href="#">Q86WB0</a> ;
Mouse	<a href="#">232679</a> ;	<a href="#">Q80YV2</a> ;

**Cellular Localization** Nucleus .

**Tissue specificity** Widely expressed. Highly expressed in heart, skeletal muscle and testis. Expressed in brain, placenta, lung, kidney, liver, pancreas, spleen, thymus, prostate, ovary small intestine and colon. Weakly or not expressed in leukocytes.

**Function** Caution:Reported to contain a F-box domain (PubMed:16009132). Such domain is however not predicted by any detection method.,developmental stage:Weakly expressed in G0/G1 phases, abundant during S and G2/M phases, and strongly decreases thereafter.,Domain:The F-box-like region is required for the interaction with SKP1A.,Function:Essential component of an SCF-type E3 ligase complex, SCF(NIPA), a complex that controls mitotic entry by mediating ubiquitination and subsequent degradation of cyclin B1 (CCNB1). Its cell-cycle-dependent phosphorylation regulates the assembly of the SCF(NIPA) complex, restricting CCNB1 ubiquitination activity to interphase. Its inactivation results in nuclear accumulation of CCNB1 in interphase and premature mitotic entry. May have an antiapoptotic role in NPM-ALK-mediated signaling events.,pathway:Protein modification; protein ubiquitination.,PTM:Phosphorylated. Phosphorylated on Ser residues at G2/M phase, but not during S and G0 phases. May also be weakly phosphorylated on Tyr residues. Ser-354 phosphorylation, a major site during the course of cell-cycle-dependent phosphorylation, results in its dissociation from the SCF(NIPA) complex, thereby preventing CCNB1 degradation leading to mitotic entry.,similarity:Contains 1 C3HC-type zinc finger.,subunit:Interacts with the NPM-ALK fusion protein in a tyrosine phosphorylation-dependent manner. Interacts with SKP1. Component of a SCF(NIPA) E3 complex with SKP1A, RBX1 and CUL1 when not phosphorylated on Ser-354. Interacts with CCNB1.,tissue specificity:Widely expressed. Highly expressed in heart, skeletal muscle and testis. Expressed in brain, placenta, lung, kidney, liver, pancreas, spleen, thymus, prostate, ovary small intestine and colon. Weakly or not expressed in leukocytes.,

## Validation Data



Western blot analysis of lysates from COS7 cells treated with HU 2nM 24h, using NIPA (Phospho-Ser354) Antibody. The lane on the right is blocked with the phospho peptide.

## Contact information

Orders: [order.cn@immunoway.com](mailto:order.cn@immunoway.com)  
Support: [support.cn@immunoway.com](mailto:support.cn@immunoway.com)  
Telephone: 400-8787-807(China)  
Website: <http://www.immunoway.com.cn>  
Address: 2200 Ringwood Ave San Jose, CA 95131 USA



Please scan the QR code to access additional product information:  
**NIPA (Phospho Ser354) Rabbit pAb**

For Research Use Only. Not for Use in Diagnostic Procedures.

[Antibody](#) | [ELISA Kits](#) | [Protein](#) | [Reagents](#)