

## eNOS (Phospho Ser615) Rabbit pAb

CatalogNo: YP0381 **Orthogonal Validated** 

### Key Features

#### Host Species

- Rabbit

#### Reactivity

- Human, Mouse, Rat

#### Applications

- WB, ELISA

#### MW

- 130-140kD (Observed)

#### Isotype

- IgG

### Storage

**Storage\*** -15°C to -25°C/1 year (Do not lower than -25°C)

**Formulation** Liquid in PBS containing 50% glycerol, 0.5% BSA and 0.02% sodium azide.

### Recommended Dilution Ratios

**WB 1:500-1:2000**

**ELISA 1:40000**

**Not yet tested in other applications.**

### Basic Information

**Clonality** Polyclonal

### Immunogen Information

**Immunogen** The antiserum was produced against synthesized peptide derived from human eNOS around the phosphorylation site of Ser615. AA range: 581-630

**Specificity** Phospho-NOS3 (S615) Polyclonal Antibody detects endogenous levels of NOS3 protein only when phosphorylated at S615. The name of modified sites may be influenced by many factors, such as species (the modified site was not originally found in human samples) and the change of protein sequence (the previous protein sequence is incomplete, and the protein sequence may be prolonged with the development of protein sequencing technology). When naming, we will use the "numbers" in historical reference to keep the sites consistent with the reports. The antibody binds to the following modification sequence (lowercase letters are modification sites): FNsIS

## Target Information

**Gene name** NOS3

**Protein Name** Nitric oxide synthase endothelial

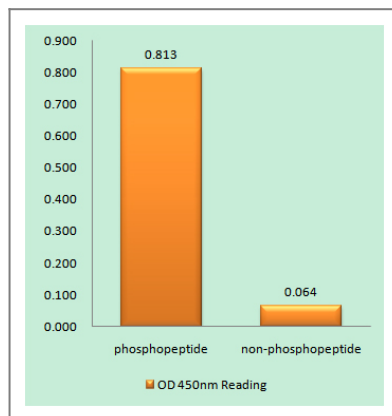
Organism	Gene ID	UniProt ID
Human	<a href="#">4846;</a>	<a href="#">P29474;</a>
Mouse	<a href="#">18127;</a>	<a href="#">P70313;</a>
Rat	<a href="#">24600;</a>	<a href="#">Q62600;</a>

**Cellular Localization** Cell membrane. Membrane, caveola. Cytoplasm, cytoskeleton. Golgi apparatus. Specifically associates with actin cytoskeleton in the G2 phase of the cell cycle; which is favored by interaction with NOSIP and results in a reduced enzymatic activity.

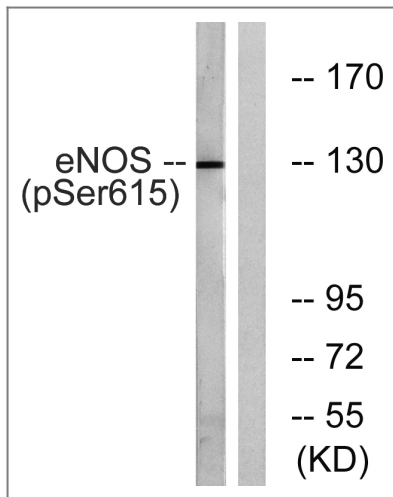
**Tissue specificity** Platelets, placenta, liver and kidney.

**Function** Catalytic activity:L-arginine + n NADPH + n H(+) + m O(2) = citrulline + nitric oxide + n NADP(+).,cofactor: Binds 1 FAD.,cofactor: Binds 1 FMN.,cofactor: Heme group.,cofactor: Tetrahydrobiopterin (BH4). May stabilize the dimeric form of the enzyme.,enzyme regulation: Stimulated by calcium/calmodulin. Inhibited by NOSIP and NOSTRIN.,Function: Produces nitric oxide (NO) which is implicated in vascular smooth muscle relaxation through a cGMP-mediated signal transduction pathway. NO mediates vascular endothelial growth factor (VEGF)-induced angiogenesis in coronary vessels and promotes blood clotting through the activation of platelets.,online information: Nitric oxide synthase entry,polymorphism: Variation in NOS3 seem to be associated with susceptibility to coronary spasm.,similarity: Belongs to the NOS family.,similarity: Contains 1 FAD-binding FR-type domain.,similarity: Contains 1 flavodoxin-like domain.,subcellular location: Specifically associates with actin cytoskeleton in the G2 phase of the cell cycle; which is favored by interaction with NOSIP and results in a reduced enzymatic activity.,subunit: Homodimer. Interacts with NOSIP and NOSTRIN.,tissue specificity: Platelets, placenta, liver and kidney.,

## Validation Data



Enzyme-Linked Immunosorbent Assay (Phospho-ELISA) for Immunogen Phosphopeptide (Phospho-left) and Non-Phosphopeptide (Phospho-right), using eNOS (Phospho-Ser615) Antibody



Western blot analysis of lysates from K562 cells treated with EGF 40nM 30', using eNOS (Phospho-Ser615) Antibody. The lane on the right is blocked with the phospho peptide.

## Contact information

Orders: [order.cn@immunoway.com](mailto:order.cn@immunoway.com)  
Support: [support.cn@immunoway.com](mailto:support.cn@immunoway.com)  
Telephone: 400-8787-807(China)  
Website: <http://www.immunoway.com.cn>  
Address: 2200 Ringwood Ave San Jose, CA 95131 USA



Please scan the QR code to access additional product information:  
**eNOS (Phospho Ser615) Rabbit pAb**

For Research Use Only. Not for Use in Diagnostic Procedures.

[Antibody](#) | [ELISA Kits](#) | [Protein](#) | [Reagents](#)