

## GATA-2 (Phospho Ser401) Rabbit pAb

CatalogNo: YP0358 **Orthogonal Validated** 

### Key Features

#### Host Species

- Rabbit

#### Reactivity

- Human, Monkey

#### Applications

- WB, ELISA

#### MW

- 50kD (Observed)

#### Isotype

- IgG

### Storage

**Storage\*** -15°C to -25°C/1 year (Do not lower than -25°C)

**Formulation** Liquid in PBS containing 50% glycerol, 0.5% BSA and 0.02% sodium azide.

### Recommended Dilution Ratios

**WB 1:500-1:2000**

**ELISA 1:5000**

**Not yet tested in other applications.**

### Basic Information

**Clonality** Polyclonal

### Immunogen Information

**Immunogen** The antiserum was produced against synthesized peptide derived from human GATA2 around the phosphorylation site of Ser401. AA range: 367-416

**Specificity** Phospho-GATA-2 (S401) Polyclonal Antibody detects endogenous levels of GATA-2 protein only when phosphorylated at S401. The name of modified sites may be influenced by many factors, such as species (the modified site was not originally found in human samples) and the change of protein sequence (the previous protein sequence is incomplete, and the protein sequence may be prolonged with the development of protein sequencing technology). When naming, we will use the "numbers" in historical reference to keep the sites consistent with the reports. The antibody binds to the following modification sequence (lowercase letters are modification sites): KMsNK

## Target Information

**Gene name** GATA2

**Protein Name** Endothelial transcription factor GATA-2

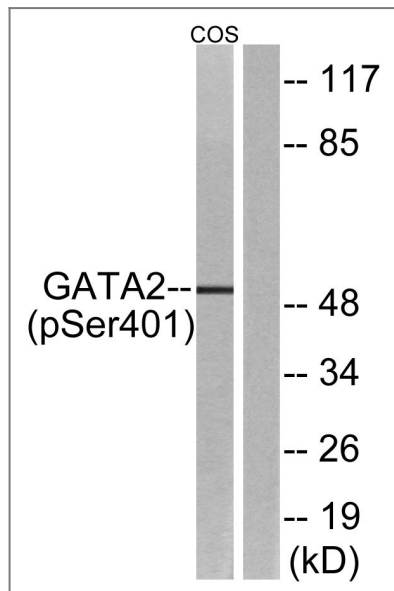
Organism	Gene ID	UniProt ID
Human	<a href="#">2624;</a>	<a href="#">P23769;</a>
Mouse		<a href="#">O09100;</a>

**Cellular Localization** Nucleus.

**Tissue specificity** Endothelial cells.

**Function** Function:Transcriptional activator which regulates endothelin-1 gene expression in endothelial cells. Binds to the consensus sequence 5'-AGATAG-3'. ,sequence Caution:Several sequencing errors.,similarity:Contains 2 GATA-type zinc fingers.,tissue specificity:Endothelial cells.,

## Validation Data



Western blot analysis of lysates from COS7 cells treated with TNF 20ng/ml 5', using GATA2 (Phospho-Ser401) Antibody. The lane on the right is blocked with the phospho peptide.

## Contact information

Orders: order.cn@immunoway.com  
Support: support.cn@immunoway.com  
Telephone: 400-8787-807(China)  
Website: http://www.immunoway.com.cn  
Address: 2200 Ringwood Ave San Jose, CA 95131 USA



Please scan the QR code  
to access additional  
product information:  
**GATA-2 (Phospho  
Ser401) Rabbit pAb**

---

For Research Use Only. Not for Use in Diagnostic Procedures.

[Antibody](#) | [ELISA Kits](#) | [Protein](#) | [Reagents](#)