

## CD50/ICAM-3 (Phospho Ser518) Rabbit pAb

CatalogNo: YP0350

### Key Features

#### Host Species

- Rabbit

#### Reactivity

- Human

#### Applications

- WB,ELISA

#### MW

- 42-60kD (Observed)

#### Isotype

- IgG

### Storage

**Storage\*** -15°C to -25°C/1 year(Do not lower than -25°C)

**Formulation** Liquid in PBS containing 50% glycerol, 0.5% BSA and 0.02% sodium azide.

### Recommended Dilution Ratios

**WB 1:500-1:2000**

**ELISA 1:40000**

**Not yet tested in other applications.**

### Basic Information

**Clonality** Polyclonal

### Immunogen Information

**Immunogen** The antiserum was produced against synthesized peptide derived from human CD50/ICAM-3 around the phosphorylation site of Ser518. AA range:484-533

**Specificity** Phospho-CD50 (S518) Polyclonal Antibody detects endogenous levels of CD50 protein only when phosphorylated at S518.The name of modified sites may be influenced by many factors, such as species (the modified site was not originally found in human samples) and the change of protein sequence (the previous protein sequence is incomplete, and the protein sequence may be prolonged with the development of protein sequencing technology). When naming, we will use the "numbers" in historical reference to keep the sites consistent with the reports. The antibody binds to the following modification sequence (lowercase letters are modification sites):SGsYH

## Target Information

**Gene name** ICAM3

**Protein Name** Intercellular adhesion molecule 3

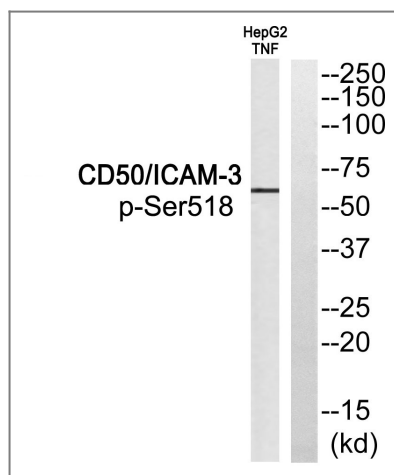
Organism	Gene ID	UniProt ID
Human	<a href="#">3385</a> ;	<a href="#">P32942</a> ;

**Cellular Localization** Membrane; Single-pass type I membrane protein.

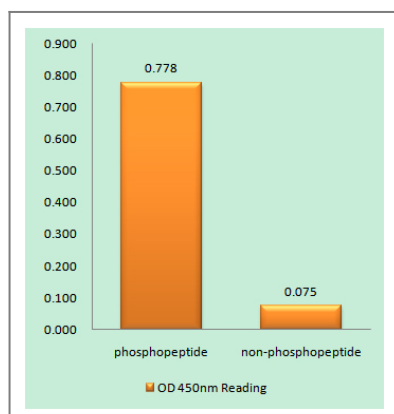
**Tissue specificity** Leukocytes.

**Function** Function:ICAM proteins are ligands for the leukocyte adhesion protein LFA-1 (integrin alpha-L/beta-2). ICAM3 is also a ligand for integrin alpha-D/beta-2.,online information:ICAM-3,PTM:N-glycosylated; glycans consist of a mixture of tri- and tetra-antennary complex-type chains and high-mannose chains.,PTM:Upon stimulation by a physiologic stimuli becomes rapidly and transiently phosphorylated on serine residues.,similarity:Belongs to the immunoglobulin superfamily. ICAM family.,similarity:Contains 5 Ig-like C2-type (immunoglobulin-like) domains.,

## Validation Data



Western blot analysis of CD50/ICAM-3 (Phospho-Ser518) Antibody. The lane on the right is blocked with the CD50/ICAM-3 (Phospho-Ser518) peptide.



Enzyme-Linked Immunosorbent Assay (Phospho-ELISA) for Immunogen Phosphopeptide (Phospho-left) and Non-Phosphopeptide (Phospho-right), using CD50/ICAM-3 (Phospho-Ser518) Antibody

## | Contact information

Orders: order.cn@immunoway.com  
Support: support.cn@immunoway.com  
Telephone: 400-8787-807(China)  
Website: <http://www.immunoway.com.cn>  
Address: 2200 Ringwood Ave San Jose, CA 95131 USA



Please scan the QR code to access additional product information:  
**CD50/ICAM-3  
(Phospho Ser518)  
Rabbit pAb**

---

For Research Use Only. Not for Use in Diagnostic Procedures.

[Antibody](#) | [ELISA Kits](#) | [Protein](#) | [Reagents](#)