

CD28 (Phospho Tyr218) Rabbit pAb

CatalogNo: YP0348 **Orthogonal Validated** 

Key Features

Host Species

- Rabbit

Reactivity

- Human

Applications

- WB,ELISA

MW

- 45kD (Observed)

Isotype

- IgG

Storage

Storage* -15°C to -25°C/1 year(Do not lower than -25°C)

Formulation Liquid in PBS containing 50% glycerol, 0.5% BSA and 0.02% sodium azide.

Recommended Dilution Ratios

WB 1:500-1:2000

ELISA 1:40000

Not yet tested in other applications.

Basic Information

Clonality Polyclonal

Immunogen Information

Immunogen The antiserum was produced against synthesized peptide derived from human CD28 around the phosphorylation site of Tyr218. AA range:171-220

Specificity Phospho-CD28 (Y218) Polyclonal Antibody detects endogenous levels of CD28 protein only when phosphorylated at Y218. The name of modified sites may be influenced by many factors, such as species (the modified site was not originally found in human samples) and the change of protein sequence (the previous protein sequence is incomplete, and the protein sequence may be prolonged with the development of protein sequencing technology). When naming, we will use the "numbers" in historical reference to keep the sites consistent with the reports. The antibody binds to the following modification sequence (lowercase letters are modification sites):AAyRS

Target Information

Gene name CD28

Protein Name T-cell-specific surface glycoprotein CD28

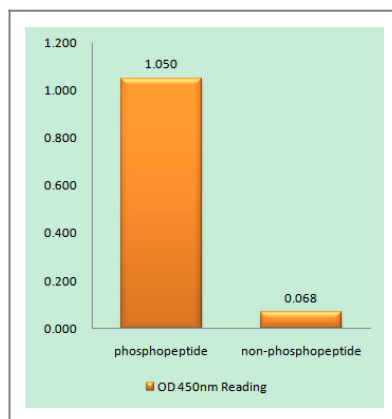
| Organism | Gene ID | UniProt ID |
|----------|-------------------------|--------------------------|
| Human | 940 ; | P10747 ; |
| Mouse | 12487 ; | P31041 ; |

Cellular Localization Membrane; Single-pass type I membrane protein.; [Isoform 3]: Cell surface .

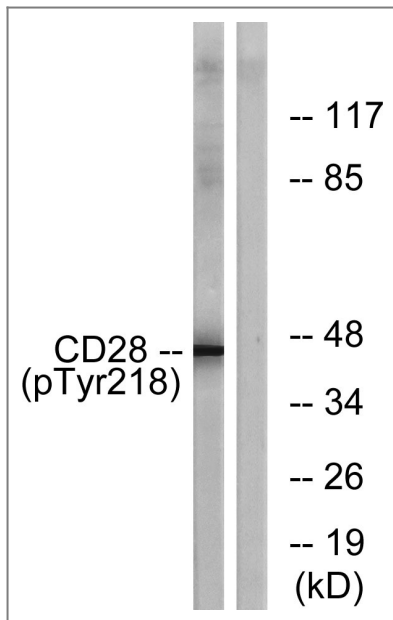
Tissue specificity Expressed in T-cells and plasma cells, but not in less mature B-cells.

Function Function:Involved in T-cell activation, the induction of cell proliferation and cytokine production and promotion of T-cell survival.,online information:CD28 entry,similarity:Contains 1 Ig-like V-type (immunoglobulin-like) domain.,subunit:Homodimer; disulfide-linked. Interacts with DUSP14. Binds to CD80/B7-1 and CD86/B7-2/B70.,tissue specificity:Expressed in T-cells and plasma cells, but not in less mature B-cells.,

Validation Data



Enzyme-Linked Immunosorbent Assay (Phospho-ELISA) for Immunogen Phosphopeptide (Phospho-left) and Non-Phosphopeptide (Phospho-right), using CD28 (Phospho-Tyr218) Antibody



Western blot analysis of lysates from HepG2 cells treated with nocodazole 1ug/ml 16h, using CD28 (Phospho-Tyr218) Antibody. The lane on the right is blocked with the phospho peptide.

Contact information

Orders: order.cn@immunoway.com
Support: support.cn@immunoway.com
Telephone: 400-8787-807(China)
Website: <http://www.immunoway.com.cn>
Address: 2200 Ringwood Ave San Jose, CA 95131 USA



Please scan the QR code to access additional product information:
CD28 (Phospho Tyr218) Rabbit pAb

For Research Use Only. Not for Use in Diagnostic Procedures.

[Antibody](#) | [ELISA Kits](#) | [Protein](#) | [Reagents](#)