

## ATRIP (Phospho Ser68) Rabbit pAb

CatalogNo: YP0336

### Key Features

#### Host Species

- Rabbit

#### Reactivity

- Human,Mouse,Rat

#### Applications

- WB,ELISA

#### MW

- 80kD (Observed)

#### Isotype

- IgG

### Storage

**Storage\*** -15°C to -25°C/1 year(Do not lower than -25°C)

**Formulation** Liquid in PBS containing 50% glycerol, 0.5% BSA and 0.02% sodium azide.

### Recommended Dilution Ratios

**WB 1:500-1:2000**

**ELISA 1:40000**

**Not yet tested in other applications.**

### Basic Information

**Clonality** Polyclonal

### Immunogen Information

**Immunogen** The antiserum was produced against synthesized peptide derived from human ATRIP around the phosphorylation site of Ser68. AA range:34-83

**Specificity** Phospho-ATRIP (S68) Polyclonal Antibody detects endogenous levels of ATRIP protein only when phosphorylated at S68.The name of modified sites may be influenced by many factors, such as species (the modified site was not originally found in human samples) and the change of protein sequence (the previous protein sequence is incomplete, and the protein sequence may be prolonged with the development of protein sequencing technology). When naming, we will use the "numbers" in historical reference to keep the sites consistent with the reports. The antibody binds to the following modification sequence (lowercase letters are modification sites):LASQA

## Target Information

**Gene name** ATRIP

**Protein Name** ATR-interacting protein

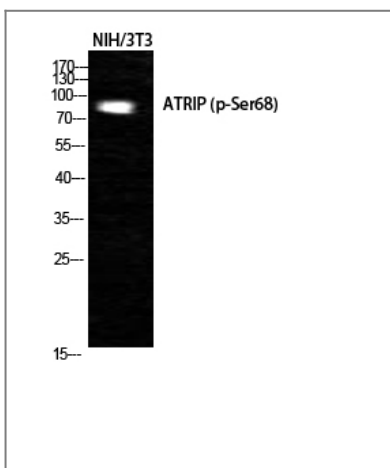
Organism	Gene ID	UniProt ID
Human	<a href="#">84126</a> ;	<a href="#">Q8WXE1</a> ;
Mouse	<a href="#">235610</a> ;	<a href="#">Q8BMG1</a> ;

**Cellular Localization** Nucleus . Redistributes to discrete nuclear foci upon DNA damage.

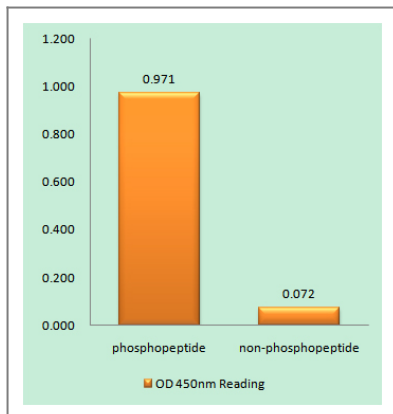
**Tissue specificity** Ubiquitous.

**Function** Caution:The gene for this protein is either identical to or adjacent to that of TREX1. Some of the mRNAs that encode ATRIP also encode TREX1 in another reading frame.,Domain:The EEXXXDDL motif is required for the interaction with catalytic subunit PRKDC and its recruitment to sites of DNA damage.,Function:Required for checkpoint signaling after DNA damage. Required for ATR expression, possibly by stabilizing the protein.,PTM:Phosphorylated by ATR.,sequence Caution:Translation N-terminally extended.,similarity:Belongs to the ATRIP family.,subcellular location:Redistributes to discrete nuclear foci upon DNA damage.,subunit:Heterodimer with ATR. The heterodimer binds the RPA complex and is then recruited to single stranded DNA. Interacts with CEP164 (via N-terminus).,tissue specificity:Ubiquitous.,

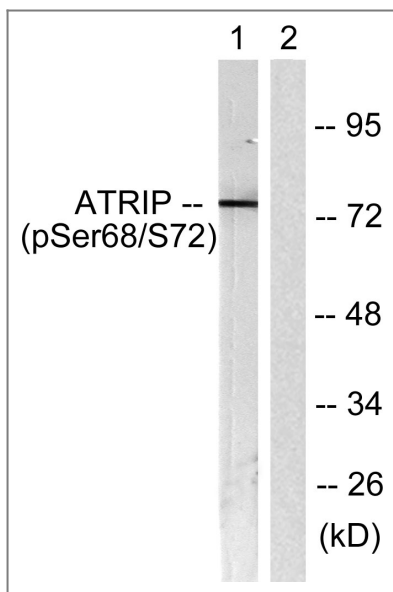
## Validation Data



Western Blot analysis of NIH-3T3 cells using Phospho-ATRIP (S68) Polyclonal Antibody cells nucleus extracted by Minute TM Cytoplasmic and Nuclear Fractionation kit (SC-003, Invent biotech, MN, USA).



Enzyme-Linked Immunosorbent Assay (Phospho-ELISA) for Immunogen Phosphopeptide (Phospho-left) and Non-Phosphopeptide (Phospho-right), using ATRIP (Phospho-Ser68) Antibody



Western blot analysis of lysates from NIH/3T3 cells, using ATRIP (Phospho-Ser68) Antibody. The lane on the right is blocked with the phospho peptide.

## Contact information

Orders: order.cn@immunoway.com  
 Support: support.cn@immunoway.com  
 Telephone: 400-8787-807(China)  
 Website: <http://www.immunoway.com.cn>  
 Address: 2200 Ringwood Ave San Jose, CA 95131 USA



Please scan the QR code to access additional product information:  
**ATRIP (Phospho Ser68) Rabbit pAb**

For Research Use Only. Not for Use in Diagnostic Procedures.

[Antibody](#) | [ELISA Kits](#) | [Protein](#) | [Reagents](#)