

PKD1 (Phospho Ser910) Rabbit pAb

CatalogNo: YP0332

Key Features

Host Species

- Rabbit

Reactivity

- Human,Mouse,Rat

Applications

- WB,IHC,IF,ELISA

MW

- 117kD (Observed)

Isotype

- IgG

Storage

Storage* -15°C to -25°C/1 year(Do not lower than -25°C)

Formulation Liquid in PBS containing 50% glycerol, 0.5% BSA and 0.02% sodium azide.

Recommended Dilution Ratios

WB 1:500-1:2000

ELISA 1:10000

IF 1:50-200

Basic Information

Clonality Polyclonal

Immunogen Information

Immunogen The antiserum was produced against synthesized peptide derived from human PKD1/PKC mu around the phosphorylation site of Ser910. AA range:863-912

Specificity Phospho-PKD1 (S910) Polyclonal Antibody detects endogenous levels of PKD1 protein only when phosphorylated at S910.The name of modified sites may be influenced by many factors, such as species (the modified site was not originally found in human samples) and the change of protein sequence (the previous protein sequence is incomplete, and the protein sequence may be prolonged with the development of protein sequencing technology). When naming, we will use the "numbers" in historical reference to keep the sites consistent with the reports. The antibody binds to the following modification sequence (lowercase letters are modification sites):RVsIL

Target Information

Gene name PRKD1

Protein Name Serine/threonine-protein kinase D1

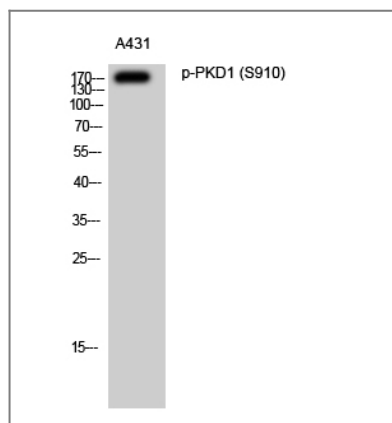
| Organism | Gene ID | UniProt ID |
|----------|-------------------------|--------------------------|
| Human | 5587 ; | Q15139 ; |
| Mouse | 18760 ; | Q62101 ; |
| Rat | 85421 ; | Q9WTQ1 ; |

Cellular Localization Cytoplasm . Cell membrane . Golgi apparatus, trans-Golgi network . Translocation to the cell membrane is required for kinase activation.

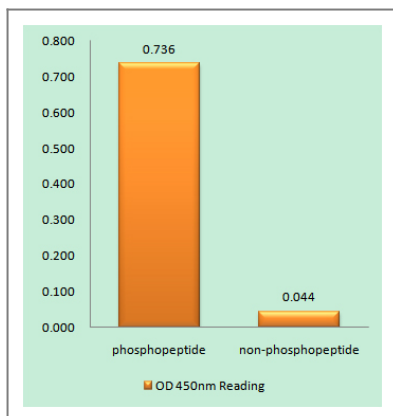
Tissue specificity Placenta,Testis,

Function Catalytic activity:ATP + a protein = ADP + a phosphoprotein.,enzyme regulation:Activated by diacylglycerol and phorbol esters.,Function:Calcium-independent, phospholipid-dependent, serine- and threonine-specific kinase involved in resistance to oxidative stress.,PTM:Phosphorylation of Ser-738 and/or Ser-742 in activated PKD is mediated by transphosphorylation (By similarity). Phosphorylation of Tyr-463 mediated by the Src/Abl pathway in response to oxidative stress activates the kinase.,similarity:Belongs to the protein kinase superfamily.,similarity:Belongs to the protein kinase superfamily. CAMK Ser/Thr protein kinase family. PKD subfamily.,similarity:Contains 1 PH domain.,similarity:Contains 1 protein kinase domain.,similarity:Contains 2 phorbol-ester/DAG-type zinc fingers.,subunit:Interacts (via N-terminus) with ADAP1/CENTA1. Interacts with Src.,

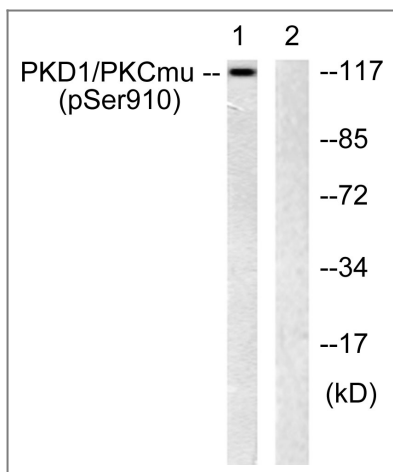
Validation Data



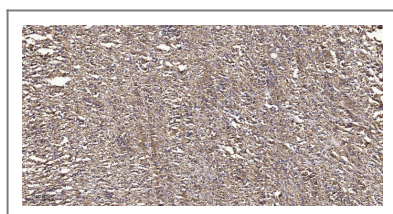
Western Blot analysis of A431 cells using Phospho-PKD1 (S910) Polyclonal Antibody



Enzyme-Linked Immunosorbent Assay (Phospho-ELISA) for Immunogen Phosphopeptide (Phospho-left) and Non-Phosphopeptide (Phospho-right), using PKD1/PKC mu (Phospho-Ser910) Antibody



Western blot analysis of lysates from A431 cells, using PKD1/PKC mu (Phospho-Ser910) Antibody. The lane on the right is blocked with the phospho peptide.



Immunohistochemical analysis of paraffin-embedded human small intestinal carcinoma tissue. 1, primary Antibody was diluted at 1:200(4° overnight). 2, Sodium citrate pH 6.0 was used for antigen retrieval(>98°C,20min). 3, Secondary antibody was diluted at 1:200

Contact information

Orders: order.cn@immunoway.com
 Support: support.cn@immunoway.com
 Telephone: 400-8787-807(China)
 Website: <http://www.immunoway.com.cn>
 Address: 2200 Ringwood Ave San Jose, CA 95131 USA



Please scan the QR code to access additional product information:
PKD1 (Phospho Ser910) Rabbit pAb

For Research Use Only. Not for Use in Diagnostic Procedures.

[Antibody](#) | [ELISA Kits](#) | [Protein](#) | [Reagents](#)