

## CD32 (Phospho Tyr292) Rabbit pAb

CatalogNo: YP0325 **Orthogonal Validated** 

### Key Features

#### Host Species

- Rabbit

#### Reactivity

- Human, Mouse, Rat

#### Applications

- WB, ELISA

#### MW

- 32kD (Observed)

#### Isotype

- IgG

### Storage

**Storage\*** -15°C to -25°C/1 year (Do not lower than -25°C)

**Formulation** Liquid in PBS containing 50% glycerol, 0.5% BSA and 0.02% sodium azide.

### Recommended Dilution Ratios

**WB 1:500-1:2000**

**ELISA 1:10000**

**Not yet tested in other applications.**

### Basic Information

**Clonality** Polyclonal

### Immunogen Information

**Immunogen** The antiserum was produced against synthesized peptide derived from human CD32 around the phosphorylation site of Tyr292. AA range: 258-307

**Specificity** Phospho-CD32 (Y292) Polyclonal Antibody detects endogenous levels of CD32 protein only when phosphorylated at Y292. The name of modified sites may be influenced by many factors, such as species (the modified site was not originally found in human samples) and the change of protein sequence (the previous protein sequence is incomplete, and the protein sequence may be prolonged with the development of protein sequencing technology). When naming, we will use the "numbers" in historical reference to keep the sites consistent with the reports. The antibody binds to the following modification sequence (lowercase letters are modification sites): ITySL

## Target Information

**Gene name** FCGR2B

**Protein Name** Low affinity immunoglobulin gamma Fc region receptor II-b

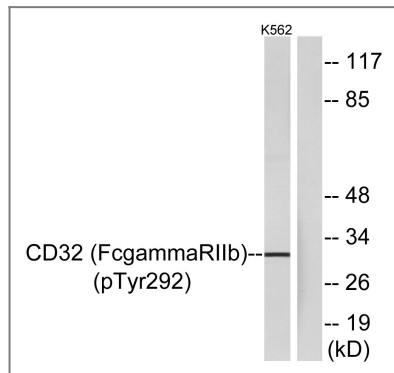
Organism	Gene ID	UniProt ID
Human	<a href="#">2213</a> ;	<a href="#">P31994</a> ;

**Cellular Localization** Cell membrane; Single-pass type I membrane protein.

**Tissue specificity** Is the most broadly distributed Fc-gamma-receptor. Expressed in monocyte, neutrophils, macrophages, basophils, eosinophils, Langerhans cells, B-cells, platelets cells and placenta (endothelial cells). Not detected in natural killer cells.

**Function** immune response,

## Validation Data



Western blot analysis of lysates from K562 cells treated with PMA 125ng/ml 30', using CD32 (Phospho-Tyr292) Antibody. The lane on the right is blocked with the phospho peptide.

## Contact information

Orders: [order.cn@immunoway.com](mailto:order.cn@immunoway.com)  
Support: [support.cn@immunoway.com](mailto:support.cn@immunoway.com)  
Telephone: 400-8787-807(China)  
Website: <http://www.immunoway.com.cn>  
Address: 2200 Ringwood Ave San Jose, CA 95131 USA



Please scan the QR code to access additional product information:  
**CD32 (Phospho Tyr292) Rabbit pAb**