

## PTP $\alpha$ (Phospho Tyr798) Rabbit pAb

CatalogNo: YP0317 **Orthogonal Validated** 

### Key Features

#### Host Species

- Rabbit

#### Reactivity

- Human, Mouse, Rat, Monkey

#### Applications

- WB, ELISA, IHC

#### MW

- 100kD, 90kD (Observed)

#### Isotype

- IgG

### Storage

**Storage\*** -15°C to -25°C/1 year (Do not lower than -25°C)

**Formulation** Liquid in PBS containing 50% glycerol, 0.5% BSA and 0.02% sodium azide.

### Recommended Dilution Ratios

WB 1:500-2000

IHC 1:50-300

ELISA 1:2000-20000

### Basic Information

**Clonality** Polyclonal

### Immunogen Information

**Immunogen** The antiserum was produced against synthesized peptide derived from human PTPRA around the phosphorylation site of Tyr798. AA range: 753-802

**Specificity** Phospho-PTP $\alpha$  (Y798) Polyclonal Antibody detects endogenous levels of PTP $\alpha$  protein only when phosphorylated at Y798. The name of modified sites may be influenced by many factors, such as species (the modified site was not originally found in human samples) and the change of protein sequence (the previous protein sequence is incomplete, and the protein sequence may be prolonged with the development of protein sequencing technology). When naming, we will use the "numbers" in historical reference to keep the sites consistent with the reports. The antibody binds to the following modification sequence (lowercase letters are modification sites): SDyAN

## Target Information

**Gene name** PTPRA

**Protein Name** Receptor-type tyrosine-protein phosphatase alpha

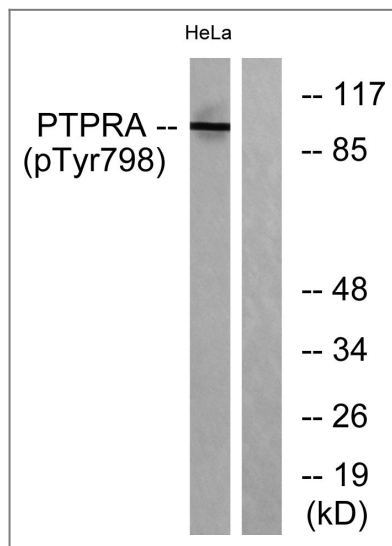
Organism	Gene ID	UniProt ID
Human	<a href="#">5786;</a>	<a href="#">P18433;</a>
Mouse	<a href="#">19262;</a>	<a href="#">P18052;</a>
Rat		<a href="#">Q03348;</a>

**Cellular Localization** Cell membrane ; Single-pass type I membrane protein . Cell junction, focal adhesion . Localizes to focal adhesion sites following integrin engagement. .

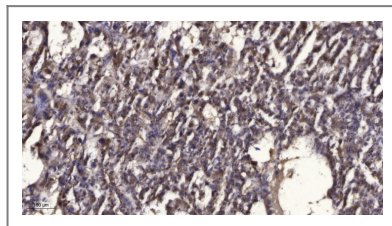
**Tissue specificity** Brain,Epithelium,Kidney,Lymph node,Skin,

**Function** Catalytic activity:Protein tyrosine phosphate + H(2)O = protein tyrosine + phosphate.,similarity:Belongs to the protein-tyrosine phosphatase family. Receptor class 4 subfamily.,similarity:Contains 2 tyrosine-protein phosphatase domains.,

## Validation Data



Western blot analysis of lysates from HeLa cells treated with serum 20% 15', using PTPRA (Phospho-Tyr798) Antibody. The lane on the right is blocked with the phospho peptide.



Immunohistochemical analysis of paraffin-embedded human liver cancer. 1, Antibody was diluted at 1:200(4° overnight). 2, Tris-EDTA,pH9.0 was used for antigen retrieval. 3,Secondary antibody was diluted at 1:200(room temperature, 45min).

## | Contact information

Orders: order.cn@immunoway.com  
Support: support.cn@immunoway.com  
Telephone: 400-8787-807(China)  
Website: <http://www.immunoway.com.cn>  
Address: 2200 Ringwood Ave San Jose, CA 95131 USA



Please scan the QR code to access additional product information:  
**PTP $\alpha$  (Phospho Tyr798) Rabbit pAb**

---

For Research Use Only. Not for Use in Diagnostic Procedures.

[Antibody](#) | [ELISA Kits](#) | [Protein](#) | [Reagents](#)