

## MITF (Phospho Ser180) Rabbit pAb

CatalogNo: YP0310

### Key Features

#### Host Species

- Rabbit

#### Reactivity

- Human, Mouse, Monkey

#### Applications

- WB, IHC, IF, ELISA

#### MW

- 52kD (Observed)

#### Isotype

- IgG

### Storage

**Storage\*** -15°C to -25°C/1 year (Do not lower than -25°C)

**Formulation** Liquid in PBS containing 50% glycerol, 0.5% BSA and 0.02% sodium azide.

### Recommended Dilution Ratios

**WB 1:500-1:2000**

**IHC 1:100-1:300**

**ELISA 1:10000**

**IF 1:50-200**

### Basic Information

**Clonality** Polyclonal

### Immunogen Information

**Immunogen** The antiserum was produced against synthesized peptide derived from human MITF around the phosphorylation site of Ser180/73. AA range:151-200

## Specificity

Phospho-MITF (S180) Polyclonal Antibody detects endogenous levels of MITF protein only when phosphorylated at S180. The name of modified sites may be influenced by many factors, such as species (the modified site was not originally found in human samples) and the change of protein sequence (the previous protein sequence is incomplete, and the protein sequence may be prolonged with the development of protein sequencing technology). When naming, we will use the "numbers" in historical reference to keep the sites consistent with the reports. The antibody binds to the following modification sequence (lowercase letters are modification sites):PNSPM

## Target Information

**Gene name** MITF

**Protein Name** Microphthalmia-associated transcription factor

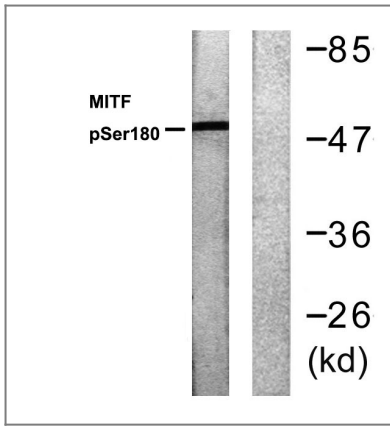
Organism	Gene ID	UniProt ID
Human	<a href="#">4286;</a>	<a href="#">O75030;</a>
Mouse	<a href="#">17342;</a>	<a href="#">Q08874;</a>

**Cellular Localization** Nucleus . Cytoplasm . Found exclusively in the nucleus upon phosphorylation. .

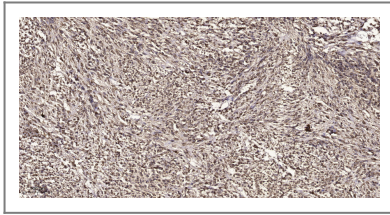
**Tissue specificity** Expressed in melanocytes (at protein level). ; [Isoform A2]: Expressed in the retinal pigment epithelium, brain, and placenta (PubMed:9647758). Expressed in the kidney (PubMed:9647758, PubMed:10578055). ; [Isoform C2]: Expressed in the kidney and retinal pigment epithelium. ; [Isoform H1]: Expressed in the kidney. ; [Isoform H2]: Expressed in the kidney. ; [Isoform M1]: Expressed in melanocytes. ; [Isoform Mdel]: Expressed in melanocytes.

**Function** Alternative products:The X2-type isoforms differ from the X1-type isoforms by the absence of a 6 residue insert,Disease:Defects in MITF are a cause of Waardenburg syndrome type 2 with ocular albinism (WS2-OA) [MIM:103470]. It is an ocular albinism with sensorineural deafness.,Disease:Defects in MITF are the cause of Tietz syndrome [MIM:103500]. It is an autosomal dominant disorder characterized by generalized hypopigmentation and profound, congenital, bilateral deafness. Penetrance is complete.,Disease:Defects in MITF are the cause of Waardenburg syndrome type 2A (WS2A) [MIM:193510]. It is a dominant inherited disorder characterized by sensorineural hearing loss and patches of depigmentation. The features show variable expression and penetrance.,Function:Transcription factor for tyrosinase and tyrosinase-related protein 1. Binds to a symmetrical DNA sequence (E-boxes) (5'-CACGTG-3') found in the tyrosinase promoter. Plays a critical role in the differentiation of various cell types as neural crest-derived melanocytes, mast cells, osteoclasts and optic cup-derived retinal pigment epithelium.,PTM:Phosphorylation at Ser-405 significantly enhances the ability to bind the tyrosinase promoter.,similarity:Belongs to the Mit/TFE family.,similarity:Contains 1 basic helix-loop-helix (bHLH) domain.,subunit:Efficient DNA binding requires dimerization with another bHLH protein. Binds DNA in the form of homodimer or heterodimer with either TFE3, TFEB or TFEC.,tissue specificity:Isoform M is exclusively expressed in melanocytes and melanoma cells. Isoform A and isoform H are widely expressed in many cell types including melanocytes and retinal pigment epithelium (RPE). Isoform C is expressed in many cell types including RPE but not in melanocyte-lineage cells.,

## Validation Data



Western blot analysis of lysates from COS7 cells, using MITF (Phospho-Ser180/73) Antibody. The lane on the right is blocked with the phospho peptide.



Immunohistochemical analysis of paraffin-embedded human small intestinal carcinoma tissue. 1,primary Antibody was diluted at 1:200(4° overnight). 2, Sodium citrate pH 6.0 was used for antigen retrieval(>98°C,20min). 3,Secondary antibody was diluted at 1:200

## Contact information

Orders: [order.cn@immunoway.com](mailto:order.cn@immunoway.com)  
Support: [support.cn@immunoway.com](mailto:support.cn@immunoway.com)  
Telephone: 400-8787-807(China)  
Website: <http://www.immunoway.com.cn>  
Address: 2200 Ringwood Ave San Jose, CA 95131 USA



Please scan the QR code to access additional product information:  
**MITF (Phospho Ser180) Rabbit pAb**

For Research Use Only. Not for Use in Diagnostic Procedures.

[Antibody](#) | [ELISA Kits](#) | [Protein](#) | [Reagents](#)