

## KOR-1 (Phospho Ser369) Rabbit pAb

CatalogNo: YP0301

### Key Features

#### Host Species

- Rabbit

#### Reactivity

- Mouse,Rat

#### Applications

- WB,IHC,IF,ELISA

#### MW

- 42kD (Observed)

#### Isotype

- IgG

### Storage

**Storage\*** -15°C to -25°C/1 year(Do not lower than -25°C)

**Formulation** Liquid in PBS containing 50% glycerol, 0.5% BSA and 0.02% sodium azide.

### Recommended Dilution Ratios

**WB 1:500-1:2000**

**IHC 1:100-1:300**

**ELISA 1:10000**

**IF 1:50-200**

### Basic Information

**Clonality** Polyclonal

### Immunogen Information

**Immunogen** The antiserum was produced against synthesized peptide derived from mouse KOR-1 around the phosphorylation site of Ser369. AA range:331-380

## Specificity

Phospho-KOR-1 (S369) Polyclonal Antibody detects endogenous levels of KOR-1 protein only when phosphorylated at S369. The name of modified sites may be influenced by many factors, such as species (the modified site was not originally found in human samples) and the change of protein sequence (the previous protein sequence is incomplete, and the protein sequence may be prolonged with the development of protein sequencing technology). When naming, we will use the "numbers" in historical reference to keep the sites consistent with the reports. The antibody binds to the following modification sequence (lowercase letters are modification sites): PAsMR

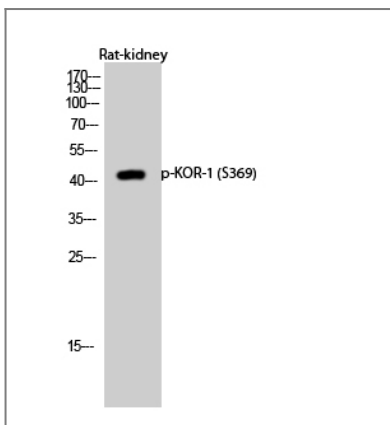
## Target Information

**Gene name** OPRK1

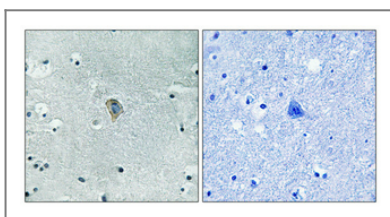
**Protein Name** Kappa-type opioid receptor

Organism	Gene ID	UniProt ID
Human	<a href="#">4986;</a>	<a href="#">P41145;</a>
Mouse	<a href="#">18387;</a>	<a href="#">P33534;</a>
Rat	<a href="#">29335;</a>	<a href="#">P34975;</a>

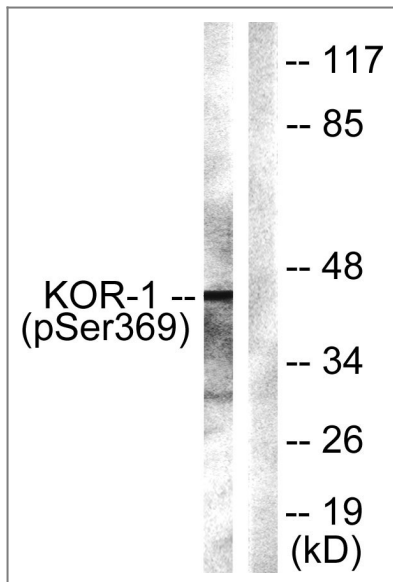
## Validation Data



Western Blot analysis of Rat-kidney cells using Phospho-KOR-1 (S369) Polyclonal Antibody diluted at 1:1000



Immunohistochemical analysis of paraffin-embedded Human brain. Antibody was diluted at 1:100 (4° overnight). High-pressure and temperature Tris-EDTA, pH 8.0 was used for antigen retrieval. Negative control (right) obtained from antibody pre-absorption by immunogen peptide.



Western blot analysis of lysates from NIH/3T3 cells, using KOR-1 (Phospho-Ser369) Antibody. The lane on the right is blocked with the phospho peptide.

## Contact information

Orders: [order.cn@immunoway.com](mailto:order.cn@immunoway.com)  
Support: [support.cn@immunoway.com](mailto:support.cn@immunoway.com)  
Telephone: 400-8787-807(China)  
Website: <http://www.immunoway.com.cn>  
Address: 2200 Ringwood Ave San Jose, CA 95131 USA



Please scan the QR code to access additional product information:  
**KOR-1 (Phospho Ser369) Rabbit pAb**

For Research Use Only. Not for Use in Diagnostic Procedures.

[Antibody](#) | [ELISA Kits](#) | [Protein](#) | [Reagents](#)