

## ATF-1 (Phospho Ser63) Rabbit pAb

CatalogNo: YP0294 **Orthogonal Validated** 

### Key Features

#### Host Species

- Rabbit

#### Reactivity

- Human, Mouse

#### Applications

- WB, ELISA

#### MW

- 29kD (Observed)

#### Isotype

- IgG

### Storage

**Storage\*** -15°C to -25°C/1 year (Do not lower than -25°C)

**Formulation** Liquid in PBS containing 50% glycerol, 0.5% BSA and 0.02% sodium azide.

### Recommended Dilution Ratios

**WB 1:500-1:2000**

**ELISA 1:5000**

**Not yet tested in other applications.**

### Basic Information

**Clonality** Polyclonal

### Immunogen Information

**Immunogen** The antiserum was produced against synthesized peptide derived from human ATF1 around the phosphorylation site of Ser63. AA range:31-80

**Specificity** Phospho-ATF-1 (S63) Polyclonal Antibody detects endogenous levels of ATF-1 protein only when phosphorylated at S63. The name of modified sites may be influenced by many factors, such as species (the modified site was not originally found in human samples) and the change of protein sequence (the previous protein sequence is incomplete, and the protein sequence may be prolonged with the development of protein sequencing technology). When naming, we will use the "numbers" in historical reference to keep the sites consistent with the reports. The antibody binds to the following modification sequence (lowercase letters are modification sites):RPsYR

## Target Information

**Gene name** ATF1

**Protein Name** Cyclic AMP-dependent transcription factor ATF-1

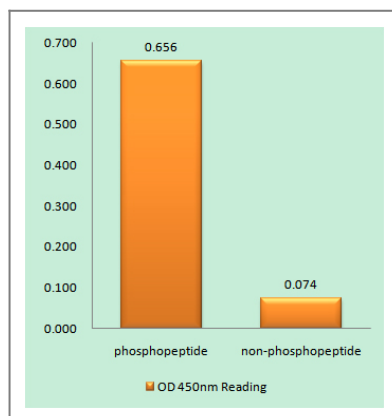
Organism	Gene ID	UniProt ID
Human	<a href="#">466</a> ;	<a href="#">P18846</a> ;
Mouse	<a href="#">11908</a> ;	<a href="#">P81269</a> ;

**Cellular Localization** Nucleus .

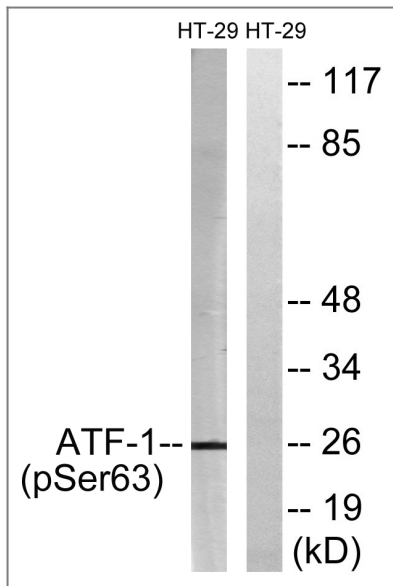
**Tissue specificity** Bone marrow ,

**Function** Disease:A chromosomal aberration involving ATF1 is associated with angiomatoid fibrous histiocytoma (AFH) [MIM:612160]. Translocation t (12;16) (q13;p11.2) with FUS generates a chimeric ATF1/FUS protein. ,Disease:A chromosomal aberration involving ATF1 is associated with angiomatoid fibrous histiocytoma (AFH) [MIM:612160]. Translocation t (12;22) (q13;q12) with EWSR1 generates a chimeric ATF1/EWSR1 protein. ,Function:This protein binds the cAMP response element (CRE) (consensus: 5'-GTGACGT[AC][AG]-3') , a sequence present in many viral and cellular promoters. Binds to the Tax-responsive element (TRE) of HTLV-I. Mediates PKA-induced stimulation of CRE-reporter genes. ,similarity:Belongs to the bZIP family. ATF subfamily. ,similarity:Contains 1 bZIP domain. ,similarity:Contains 1 KID (kinase-inducible) domain. ,subunit:Binds DNA as a dimer. ,

## Validation Data



Enzyme-Linked Immunosorbent Assay (Phospho-ELISA) for Immunogen Phosphopeptide (Phospho-left) and Non-Phosphopeptide (Phospho-right), using ATF1 (Phospho-Ser63) Antibody



Western blot analysis of lysates from HT29 cells treated with Insulin 0.01U/ML 15', using ATF1 (Phospho-Ser63) Antibody. The lane on the right is blocked with the phospho peptide.

## Contact information

Orders: [order.cn@immunoway.com](mailto:order.cn@immunoway.com)  
 Support: [support.cn@immunoway.com](mailto:support.cn@immunoway.com)  
 Telephone: 400-8787-807(China)  
 Website: <http://www.immunoway.com.cn>  
 Address: 2200 Ringwood Ave San Jose, CA 95131 USA



Please scan the QR code to access additional product information:  
**ATF-1 (Phospho Ser63) Rabbit pAb**

For Research Use Only. Not for Use in Diagnostic Procedures.

[Antibody](#) | [ELISA Kits](#) | [Protein](#) | [Reagents](#)