

Src (Phospho Tyr419) Rabbit pAb

CatalogNo: YP0286

Key Features

Host Species

- Rabbit

Reactivity

- Human, Mouse, Rat

Applications

- WB, IHC, IF, ELISA

MW

- 60kD (Observed)

Isotype

- IgG

Storage

Storage* -15°C to -25°C/1 year (Do not lower than -25°C)

Formulation Liquid in PBS containing 50% glycerol, 0.5% BSA and 0.02% sodium azide.

Recommended Dilution Ratios

WB 1:500-1:2000

IHC 1:100-1:300

ELISA 1:20000

IF 1:50-200

Basic Information

Clonality Polyclonal

Immunogen Information

Immunogen Synthesized phospho-peptide around the phosphorylation site of human c-Src (phospho Tyr419)

Specificity

Phospho-c-Src (Y419) Polyclonal Antibody detects endogenous levels of c-Src protein only when phosphorylated at Y419. The name of modified sites may be influenced by many factors, such as species (the modified site was not originally found in human samples) and the change of protein sequence (the previous protein sequence is incomplete, and the protein sequence may be prolonged with the development of protein sequencing technology). When naming, we will use the "numbers" in historical reference to keep the sites consistent with the reports. The antibody binds to the following modification sequence (lowercase letters are modification sites):NEYTA

Target Information

Gene name SRC SRC1

Protein Name Proto-oncogene tyrosine-protein kinase Src

Organism	Gene ID	UniProt ID
Human	6714 ;	P12931 ;
Mouse	20779 ;	P05480 ;
Rat		Q9WUD9 ;

Cellular Localization

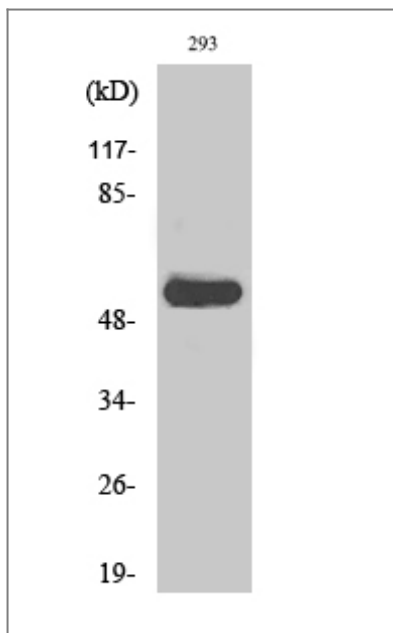
Cell membrane ; Lipid-anchor . Mitochondrion inner membrane . Nucleus . Cytoplasm , cytoskeleton . Cytoplasm , perinuclear region . Cell junction , focal adhesion . Localizes to focal adhesion sites following integrin engagement (PubMed:22801373) . Localization to focal adhesion sites requires myristoylation and the SH3 domain (PubMed:7525268) . Colocalizes with PDLIM4 at the perinuclear region , but not at focal adhesions (PubMed:19307596) . .

Tissue specificity Expressed ubiquitously. Platelets , neurons and osteoclasts express 5-fold to 200-fold higher levels than most other tissues.; [Isoform 1]: Expressed in spleen and liver. ; [Isoform 2]: Expressed in brain. ; [Isoform 3]: Expressed in brain.

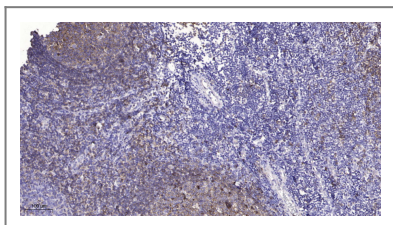
Function

Catalytic activity:ATP + a [protein]-L-tyrosine = ADP + a [protein]-L-tyrosine phosphate. ,PTM:Phosphorylated on Tyr-530 by c-Src kinase (CSK) . The phosphorylated form is termed pp60c-src. The phosphorylated tail interacts with the SH2 domain thereby repressing kinase activity. ,similarity:Belongs to the protein kinase superfamily. Tyr protein kinase family. SRC subfamily. ,similarity:Contains 1 protein kinase domain. ,similarity:Contains 1 SH2 domain. ,similarity:Contains 1 SH3 domain. ,subunit:Interacts with DDEF1/ASAP1; via the SH3 domain. Interacts with CCPG1 (By similarity) . Interacts with CDCP1 , PELP1 , TGFB1I1 and TOM1L2. Interacts with the cytoplasmic domain of MUC1 , phosphorylates it and increases binding of MUC1 with beta-catenin. Interacts with RALGPS1; via the SH3 domain. Interacts with HEV ORF3 protein; via the SH3 domain. ,

Validation Data



Western Blot analysis of various cells using Phospho-c-Src (Y419) Polyclonal Antibody diluted at 1:1000



Immunohistochemical analysis of paraffin-embedded human tonsil. 1, Antibody was diluted at 1:200 (4°C overnight). 2, Tris-EDTA, pH9.0 was used for antigen retrieval. 3, Secondary antibody was diluted at 1:200 (room temperature, 45min).

Contact information

Orders: order.cn@immunoway.com
Support: support.cn@immunoway.com
Telephone: 400-8787-807(China)
Website: <http://www.immunoway.com.cn>
Address: 2200 Ringwood Ave San Jose, CA 95131 USA



Please scan the QR code to access additional product information:
Src (Phospho Tyr419) Rabbit pAb

For Research Use Only. Not for Use in Diagnostic Procedures.

[Antibody](#) | [ELISA Kits](#) | [Protein](#) | [Reagents](#)