

ZNF598 (Phospho Tyr306) Rabbit pAb

CatalogNo: YP0278

Key Features

Host Species

- Rabbit

Reactivity

- Human, Mouse

Applications

- WB, IHC, IF, ELISA

MW

- 99kD (Observed)

Isotype

- IgG

Storage

Storage* -15°C to -25°C/1 year (Do not lower than -25°C)

Formulation Liquid in PBS containing 50% glycerol, 0.5% BSA and 0.02% sodium azide.

Recommended Dilution Ratios

WB 1:500-1:2000

IHC 1:100-1:300

ELISA 1:10000

IF 1:50-200

Basic Information

Clonality Polyclonal

Immunogen Information

Immunogen Synthesized phospho-peptide around the phosphorylation site of human ZFP598 (phospho Tyr306)

Specificity

Phospho-ZFP598 (Y306) Polyclonal Antibody detects endogenous levels of ZFP598 protein only when phosphorylated at Y306. The name of modified sites may be influenced by many factors, such as species (the modified site was not originally found in human samples) and the change of protein sequence (the previous protein sequence is incomplete, and the protein sequence may be prolonged with the development of protein sequencing technology). When naming, we will use the "numbers" in historical reference to keep the sites consistent with the reports. The antibody binds to the following modification sequence (lowercase letters are modification sites):EDyEE

Target Information

Gene name ZNF598

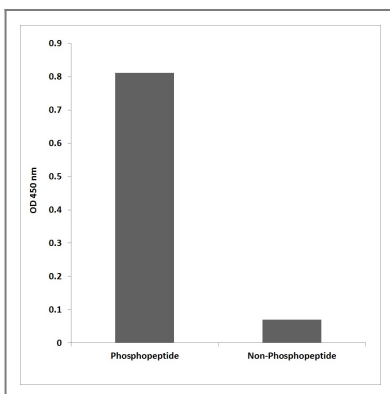
Protein Name Zinc finger protein 598

Organism	Gene ID	UniProt ID
Human	90850;	Q86UK7;
Mouse	213753;	Q80YR4;

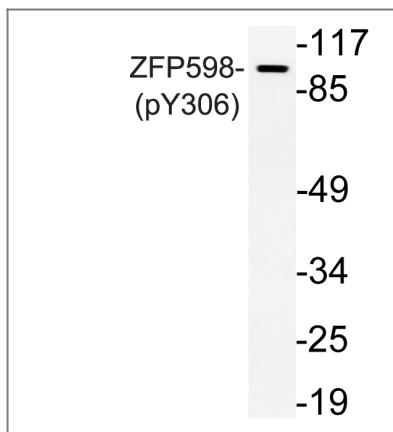
Tissue specificity Lung, Melanoma, Skin, Spleen, T-cell,

Function similarity: Contains 1 C2H2-type zinc finger., similarity: Contains 1 RING-type zinc finger.,

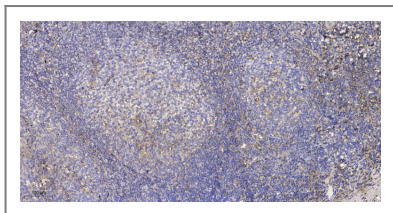
Validation Data



Enzyme-Linked Immunosorbent Assay (Phospho-ELISA) for Immunogen Phosphopeptide (Phospho-left) and Non-Phosphopeptide (Phospho-right), using ZFP598 (Phospho-Tyr306) Antibody



Western blot analysis of lysate from Jurkat cells, using phospho-ZFP598 (Phospho-Tyr306) antibody.



Immunohistochemical analysis of paraffin-embedded human tonsil. 1, Antibody was diluted at 1:200(4° overnight). 2, Tris-EDTA,pH9.0 was used for antigen retrieval. 3,Secondary antibody was diluted at 1:200(room temperature, 30min).

Contact information

Orders: order.cn@immunoway.com
Support: support.cn@immunoway.com
Telephone: 400-8787-807(China)
Website: <http://www.immunoway.com.cn>
Address: 2200 Ringwood Ave San Jose, CA 95131 USA



Please scan the QR code to access additional product information:
ZNF598 (Phospho Tyr306) Rabbit pAb

For Research Use Only. Not for Use in Diagnostic Procedures.

[Antibody](#) | [ELISA Kits](#) | [Protein](#) | [Reagents](#)