

## STAT5A (Phospho Ser780) Rabbit pAb

CatalogNo: YP0253

Comparable Abs 

Orthogonal Validated 

### Key Features

#### Host Species

- Rabbit

#### Reactivity

- Human, Mouse, Rat

#### Applications

- WB, IHC, IF, IP, ELISA

#### MW

- 91kD (Observed)

#### Isotype

- IgG

### Storage

**Storage\*** -15°C to -25°C/1 year (Do not lower than -25°C)

**Formulation** Liquid in PBS containing 50% glycerol, 0.5% BSA and 0.02% sodium azide.

### Recommended Dilution Ratios

**WB 1:500-1:2000**

**IHC 1:100-1:300**

**IP 2-5 ug/mg lysate**

**ELISA 1:10000**

**IF 1:50-200**

### Basic Information

**Clonality** Polyclonal

### Immunogen Information

**Immunogen** The antiserum was produced against synthesized peptide derived from human STAT5A around the phosphorylation site of Ser780. AA range: 745-794

## Specificity

Phospho-Stat5a (S780) Polyclonal Antibody detects endogenous levels of Stat5a protein only when phosphorylated at S780. The name of modified sites may be influenced by many factors, such as species (the modified site was not originally found in human samples) and the change of protein sequence (the previous protein sequence is incomplete, and the protein sequence may be prolonged with the development of protein sequencing technology). When naming, we will use the "numbers" in historical reference to keep the sites consistent with the reports. The antibody binds to the following modification sequence (lowercase letters are modification sites):RLSPP

## Target Information

**Gene name** STAT5A

**Protein Name** Signal transducer and activator of transcription 5A

Organism	Gene ID	UniProt ID
Human	<a href="#">6776</a> ;	<a href="#">P42229</a> ;
Mouse	<a href="#">20850</a> ;	<a href="#">P42230</a> ;
Rat	<a href="#">24918</a> ;	<a href="#">Q62771</a> ;

### Cellular Localization

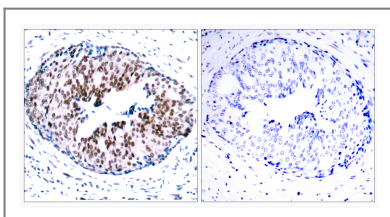
Cytoplasm . Nucleus . Translocated into the nucleus in response to phosphorylation.

**Tissue specificity** Brain ,Cervix ,Epithelium ,Lung ,Placenta ,Synovial memb

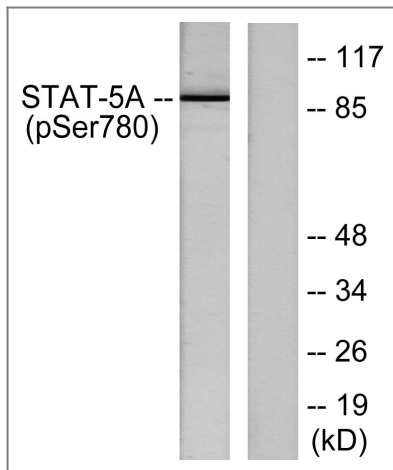
### Function

Function:Carries out a dual Function: signal transduction and activation of transcription. Binds to the GAS element and activates PRL-induced transcription. ,online information:STAT5 entry ,PTM:Tyrosine phosphorylated in response to IL-2 , IL-3 , IL-7 , IL-15 , GM-CSF , growth hormone , prolactin , erythropoietin and thrombopoietin. Tyrosine phosphorylation is required for DNA-binding activity and dimerization. Serine phosphorylation is also required for maximal transcriptional activity. ,similarity:Belongs to the transcription factor STAT family. ,similarity:Contains 1 SH2 domain. ,subcellular location:Translocated into the nucleus in response to phosphorylation. ,subunit:Forms a homodimer or a heterodimer with a related family member. Binds NR3C1 (By similarity) . Interacts with NCOA1 and SOCS7. ,

## Validation Data



Immunohistochemistry analysis of paraffin-embedded human breast carcinoma, using STAT5A (Phospho-Ser780) Antibody. The picture on the right is blocked with the phospho peptide.



Western blot analysis of lysates from HeLa cells, using STAT5A (Phospho-Ser780) Antibody. The lane on the right is blocked with the phospho peptide.

## Contact information

Orders: [order.cn@immunoway.com](mailto:order.cn@immunoway.com)  
Support: [support.cn@immunoway.com](mailto:support.cn@immunoway.com)  
Telephone: 400-8787-807(China)  
Website: <http://www.immunoway.com.cn>  
Address: 2200 Ringwood Ave San Jose, CA 95131 USA



Please scan the QR code to access additional product information:  
**STAT5A (Phospho Ser780) Rabbit pAb**

For Research Use Only. Not for Use in Diagnostic Procedures.

[Antibody](#) | [ELISA Kits](#) | [Protein](#) | [Reagents](#)