

Pragmin (Phospho Tyr413) Rabbit pAb

CatalogNo: YP0236

Key Features

Host Species

- Rabbit

Reactivity

- Human, Mouse, Rat

Applications

- WB, IHC, IF, ELISA

MW

- 175kD (Observed)

Isotype

- IgG

Storage

Storage* -15°C to -25°C/1 year (Do not lower than -25°C)

Formulation Liquid in PBS containing 50% glycerol, 0.5% BSA and 0.02% sodium azide.

Recommended Dilution Ratios

WB 1:500-1:2000

IHC 1:100-1:300

ELISA 1:10000

IF 1:50-200

Basic Information

Clonality Polyclonal

Immunogen Information

Immunogen Synthesized phospho-peptide around the phosphorylation site of human Pragmin (phospho Tyr413)

Specificity

Phospho-Pragmin (Y413) Polyclonal Antibody detects endogenous levels of Pragmin protein only when phosphorylated at Y413. The name of modified sites may be influenced by many factors, such as species (the modified site was not originally found in human samples) and the change of protein sequence (the previous protein sequence is incomplete, and the protein sequence may be prolonged with the development of protein sequencing technology). When naming, we will use the "numbers" in historical reference to keep the sites consistent with the reports. The antibody binds to the following modification sequence (lowercase letters are modification sites): PlyAE

Target Information

Gene name SGK223

Protein Name Tyrosine-protein kinase SgK223

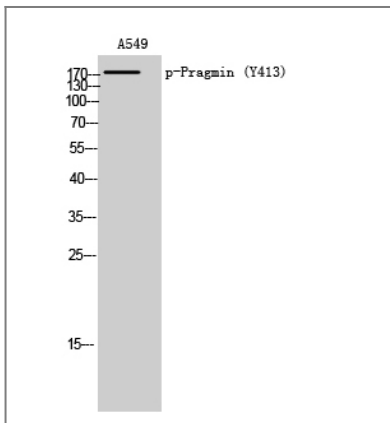
Organism	Gene ID	UniProt ID
Human	157285;	Q86YV5;
Mouse	244418;	Q571I4;

Cellular Localization Cytoplasm . Cell junction, focal adhesion . Nucleus . Colocalized with NOTCH1 in the nucleus. .

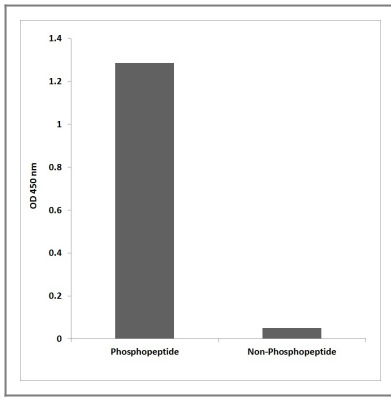
Tissue specificity Amygdala, Epithelium, Fetal brain, Spleen,

Function Catalytic activity: ATP + a [protein]-L-tyrosine = ADP + a [protein]-L-tyrosine phosphate., similarity: Belongs to the protein kinase superfamily., similarity: Contains 1 protein kinase domain.,

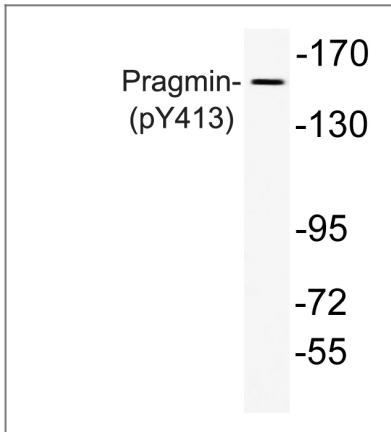
Validation Data



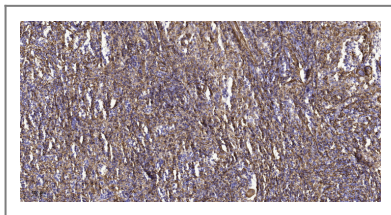
Western Blot analysis of A549 cells using Phospho-Pragmin (Y413) Polyclonal Antibody



Enzyme-Linked Immunosorbent Assay (Phospho-ELISA) for Immunogen Phosphopeptide (Phospho-left) and Non-Phosphopeptide (Phospho-right), using Pragmin (Phospho-Tyr413) Antibody



Western blot analysis of lysate from A549 cells, using phospho-Pragmin (Phospho-Tyr413) antibody.



Immunohistochemical analysis of paraffin-embedded human spleen tissue. 1, primary Antibody was diluted at 1:200(4° overnight). 2, Sodium citrate pH 6.0 was used for antigen retrieval(>98°C,20min). 3,Secondary antibody was diluted at 1:200

Contact information

Orders: order.cn@immunoway.com
 Support: support.cn@immunoway.com
 Telephone: 400-8787-807(China)
 Website: <http://www.immunoway.com.cn>
 Address: 2200 Ringwood Ave San Jose, CA 95131 USA



Please scan the QR code to access additional product information:
Pragmin (Phospho Tyr413) Rabbit pAb