

## PI 3 kinase p85 $\beta$ (Phospho Tyr464) Rabbit pAb

CatalogNo: YP0225

### Key Features

#### Host Species

- Rabbit

#### Reactivity

- Human, Mouse, Rat

#### Applications

- WB, IHC, ELISA

#### MW

- 85kD (Observed)

#### Isotype

- IgG

### Storage

**Storage\*** -15°C to -25°C/1 year (Do not lower than -25°C)

**Formulation** Liquid in PBS containing 50% glycerol, 0.5% BSA and 0.02% sodium azide.

### Recommended Dilution Ratios

**IHC 1:200-1:1000**

**WB 1:500-1:2000**

**ELISA 1:10000**

**Not yet tested in other applications.**

### Basic Information

**Clonality** Polyclonal

### Immunogen Information

**Immunogen** Synthesized phospho-peptide around the phosphorylation site of human PI 3-kinase p85 $\beta$  (phospho Tyr464)

## Specificity

Phospho-PI 3-kinase p85 $\beta$  (Y464) Polyclonal Antibody detects endogenous levels of PI 3-kinase p85 $\beta$  protein only when phosphorylated at Y464. The name of modified sites may be influenced by many factors, such as species (the modified site was not originally found in human samples) and the change of protein sequence (the previous protein sequence is incomplete, and the protein sequence may be prolonged with the development of protein sequencing technology). When naming, we will use the "numbers" in historical reference to keep the sites consistent with the reports. The antibody binds to the following modification sequence (lowercase letters are modification sites):QLyEE

## Target Information

**Gene name** PIK3R2

**Protein Name** Phosphatidylinositol 3-kinase regulatory subunit beta

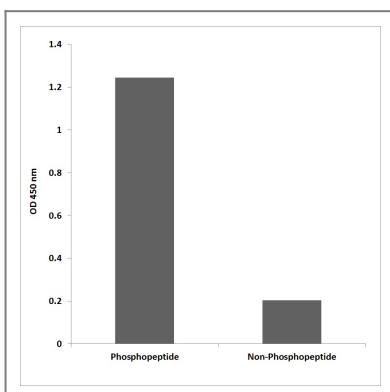
Organism	Gene ID	UniProt ID
Human	<a href="#">5296</a> ;	<a href="#">O00459</a> ;
Mouse	<a href="#">18709</a> ;	<a href="#">O08908</a> ;
Rat		<a href="#">Q63788</a> ;

**Cellular Localization** nucleus,cytosol,phosphatidylinositol 3-kinase complex,

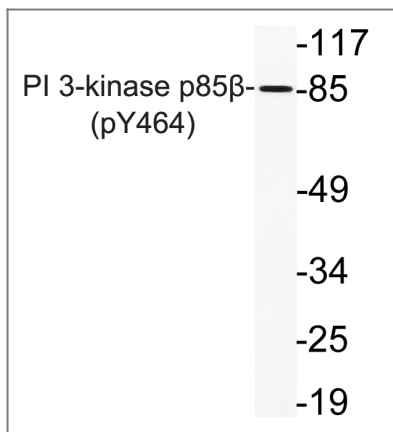
**Tissue specificity** Brain,Epithelium,Kidney,Placenta,

**Function** Function: Binds to activated (phosphorylated) protein-tyrosine kinases, through its SH2 domain, and acts as an adapter, mediating the association of the p110 catalytic unit to the plasma membrane.,similarity: Belongs to the PI3K p85 subunit family.,similarity: Contains 1 Rho-GAP domain.,similarity: Contains 1 SH3 domain.,similarity: Contains 2 SH2 domains.,subunit: Heterodimer of a p110 (catalytic) and a p85 (regulatory) subunits.,

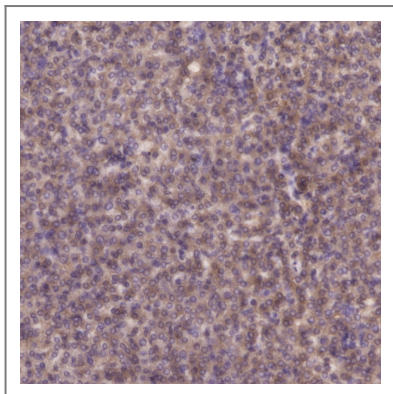
## Validation Data



Enzyme-Linked Immunosorbent Assay (Phospho-ELISA) for Immunogen Phosphopeptide (Phospho-left) and Non-Phosphopeptide (Phospho-right), using PI 3-kinase p85 $\beta$  (Phospho-Tyr464) Antibody



Western blot analysis of lysate from Jurkat cells, using phospho-PI 3-kinase p85β (Phospho-Tyr464) antibody.



Immunohistochemical analysis of paraffin-embedded human Moderately differentiated hepatocellular carcinoma Antibody was diluted at 1:200(4° overnight).

## Contact information

Orders: order.cn@immunoway.com  
 Support: support.cn@immunoway.com  
 Telephone: 400-8787-807(China)  
 Website: <http://www.immunoway.com.cn>  
 Address: 2200 Ringwood Ave San Jose, CA 95131 USA



Please scan the QR code to access additional product information:  
**PI 3 kinase p85β (Phospho Tyr464) Rabbit pAb**

For Research Use Only. Not for Use in Diagnostic Procedures.

[Antibody](#) | [ELISA Kits](#) | [Protein](#) | [Reagents](#)