

## Paxillin (Phospho Tyr88) Rabbit pAb

CatalogNo: YP0221

### Key Features

#### Host Species

- Rabbit

#### Reactivity

- Human, Mouse, Rat

#### Applications

- WB, IHC, IF, ELISA

#### MW

- 68kD (Observed)

#### Isotype

- IgG

### Storage

**Storage\*** -15°C to -25°C/1 year (Do not lower than -25°C)

**Formulation** Liquid in PBS containing 50% glycerol, 0.5% BSA and 0.02% sodium azide.

### Recommended Dilution Ratios

**WB 1:500-1:2000**

**IHC 1:100-1:300**

**ELISA 1:10000**

**IF 1:50-200**

### Basic Information

**Clonality** Polyclonal

### Immunogen Information

**Immunogen** Synthesized phospho-peptide around the phosphorylation site of human Paxillin (phospho Tyr88)

## Specificity

Phospho-Paxillin (Y88) Polyclonal Antibody detects endogenous levels of Paxillin protein only when phosphorylated at Y88. The name of modified sites may be influenced by many factors, such as species (the modified site was not originally found in human samples) and the change of protein sequence (the previous protein sequence is incomplete, and the protein sequence may be prolonged with the development of protein sequencing technology). When naming, we will use the "numbers" in historical reference to keep the sites consistent with the reports. The antibody binds to the following modification sequence (lowercase letters are modification sites):PVyGS

## Target Information

**Gene name** PXN

**Protein Name** Paxillin

| Organism | Gene ID               | UniProt ID              |
|----------|-----------------------|-------------------------|
| Human    | <a href="#">5829;</a> | <a href="#">P49023;</a> |
| Mouse    |                       | <a href="#">Q8VI36;</a> |

### Cellular Localization

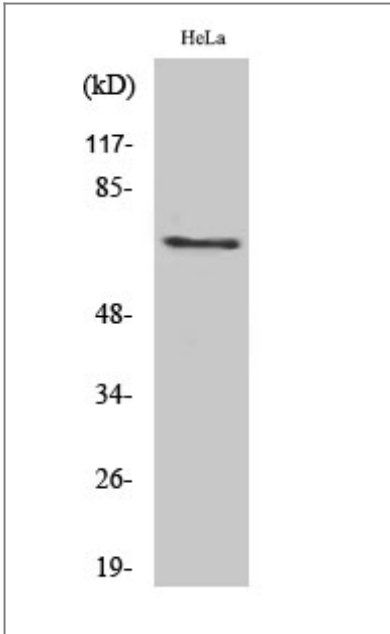
Cytoplasm, cytoskeleton . Cell junction, focal adhesion . Cytoplasm, cell cortex . Colocalizes with integrins at the cell periphery. Colocalize with PXN to membrane ruffles and the leading edge of migrating cells (PubMed:23128389). .

**Tissue specificity** Brain,Epithelium,Lung,Placenta,T-cell,Uterus,

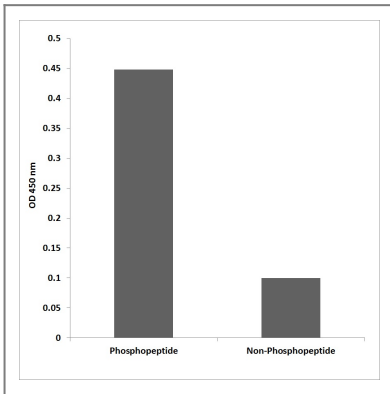
### Function

Function:Cytoskeletal protein involved in actin-membrane attachment at sites of cell adhesion to the extracellular matrix (focal adhesion).,PTM:Phosphorylated on tyrosine residues during integrin-mediated cell adhesion, embryonic development, fibroblast transformation and following stimulation of cells by mitogens.,similarity:Belongs to the paxillin family.,similarity:Contains 3 LIM zinc-binding domains.,similarity:Contains 4 LIM zinc-binding domains.,subunit:Binds in vitro to vinculin as well as to the SH3 domain of c-SRC and, when tyrosine phosphorylated, to the SH2 domain of V-CRK. Isoform beta binds to focal adhesion kinase but weakly to vinculin. Isoform gamma binds to vinculin but only weakly to focal adhesion kinase. Interacts with GIT1, NUDT16L1/SDOS, PARVA and TGFB111. Component of cytoplasmic complexes, which also contain GIT1, ARHGEF6 and PAK1 (By similarity). Binds ASAP2. Interacts with unphosphorylated ITGA4. Interacts with RNF5.,

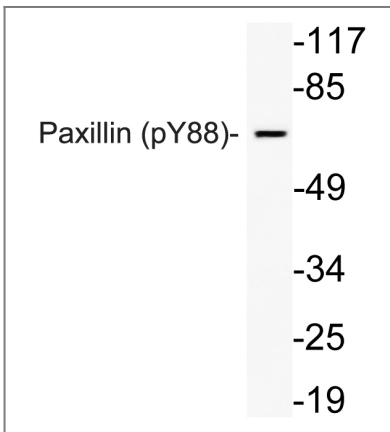
## Validation Data



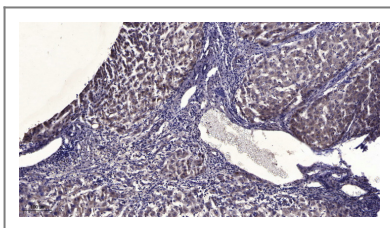
Western Blot analysis of various cells using Phospho-Paxillin (Y88) Polyclonal Antibody



Enzyme-Linked Immunosorbent Assay (Phospho-ELISA) for Immunogen Phosphopeptide (Phospho-left) and Non-Phosphopeptide (Phospho-right), using Paxillin (Phospho-Tyr88) Antibody



Western blot analysis of lysate from HeLa cells using phospho-Paxillin (Phospho-Tyr88) antibody.



Immunohistochemical analysis of paraffin-embedded human liver cancer. 1, Antibody was diluted at 1:200(4° overnight). 2, Tris-EDTA,pH9.0 was used for antigen retrieval. 3,Secondary antibody was diluted at 1:200(room temperature, 45min).

## Contact information

Orders: order.cn@immunoway.com  
Support: support.cn@immunoway.com  
Telephone: 400-8787-807(China)  
Website: http://www.immunoway.com.cn  
Address: 2200 Ringwood Ave San Jose, CA 95131 USA



Please scan the QR code  
to access additional  
product information:  
**Paxillin (Phospho  
Tyr88) Rabbit pAb**

---

For Research Use Only. Not for Use in Diagnostic Procedures.

[Antibody](#) | [ELISA Kits](#) | [Protein](#) | [Reagents](#)