

## p70 S6 kinase $\alpha$ (Phospho Thr421) Rabbit pAb

CatalogNo: YP0216

### Key Features

#### Host Species

- Rabbit

#### Reactivity

- Human, Mouse, Rat

#### Applications

- WB, IHC, IF, ELISA

#### MW

- 70kD (Observed)

#### Isotype

- IgG

### Storage

**Storage\*** -15°C to -25°C/1 year (Do not lower than -25°C)

**Formulation** Liquid in PBS containing 50% glycerol, 0.5% BSA and 0.02% sodium azide.

### Recommended Dilution Ratios

**WB 1:500-1:2000**

**IHC 1:100-1:300**

**ELISA 1:10000**

**IF 1:50-200**

### Basic Information

**Clonality** Polyclonal

### Immunogen Information

**Immunogen** Synthesized phospho-peptide around the phosphorylation site of human p70 S6 kinase  $\alpha$  (phospho Thr421)

**Specificity**

Phospho-p70 S6 kinase  $\alpha$  (T421) Polyclonal Antibody detects endogenous levels of p70 S6 kinase  $\alpha$  protein only when phosphorylated at T421. The name of modified sites may be influenced by many factors, such as species (the modified site was not originally found in human samples) and the change of protein sequence (the previous protein sequence is incomplete, and the protein sequence may be prolonged with the development of protein sequencing technology). When naming, we will use the "numbers" in historical reference to keep the sites consistent with the reports. The antibody binds to the following modification sequence (lowercase letters are modification sites):PRtPV

**| Target Information**

**Gene name** RPS6KB1 STK14A P70S6K

**Protein Name** Ribosomal protein S6 kinase beta-1

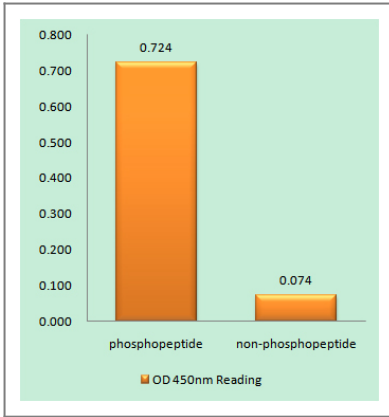
Organism	Gene ID	UniProt ID
Human	<a href="#">6198</a> ;	<a href="#">P23443</a> ;
Mouse	<a href="#">72508</a> ;	<a href="#">Q8BSK8</a> ;
Rat	<a href="#">83840</a> ;	<a href="#">P67999</a> ;

**Cellular Localization** Cell junction, synapse, synaptosome . Mitochondrion outer membrane. Mitochondrion. Colocalizes with URI1 at mitochondrion.; [Isoform Alpha I]: Nucleus. Cytoplasm.; [Isoform Alpha II]: Cytoplasm.

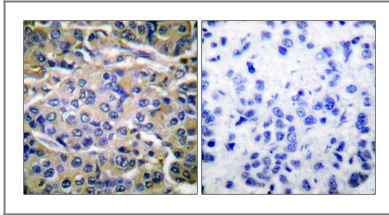
**Tissue specificity** Widely expressed.

**Function** Catalytic activity:ATP + a protein = ADP + a phosphoprotein.,enzyme regulation:Activation by serine/threonine phosphorylation and protein kinase C, inactivated by type 2A phosphatase.,Function:Phosphorylates specifically ribosomal protein S6 in response to insulin or several classes of mitogens.,similarity:Belongs to the protein kinase superfamily.,similarity:Belongs to the protein kinase superfamily. AGC Ser/Thr protein kinase family. S6 kinase subfamily.,similarity:Contains 1 AGC-kinase C-terminal domain.,similarity:Contains 1 protein kinase domain.,subunit:Interacts with PPP1R9A/neurabin-1.,tissue specificity:Widely expressed.,

**| Validation Data**



Enzyme-Linked Immunosorbent Assay (Phospho-ELISA) for Immunogen Phosphopeptide (Phospho-left) and Non-Phosphopeptide (Phospho-right), using p70 S6 Kinase (Phospho-Thr421) Antibody



Immunohistochemistry analysis of paraffin-embedded human breast cancer, using p70 S6 Kinase (Phospho-Thr421) Antibody. The picture on the right is blocked with the p70 S6 Kinase (Phospho-Thr421) peptide.

## Contact information

Orders: [order.cn@immunoway.com](mailto:order.cn@immunoway.com)  
 Support: [support.cn@immunoway.com](mailto:support.cn@immunoway.com)  
 Telephone: 400-8787-807(China)  
 Website: <http://www.immunoway.com.cn>  
 Address: 2200 Ringwood Ave San Jose, CA 95131 USA



Please scan the QR code to access additional product information:  
**p70 S6 kinase  $\alpha$  (Phospho Thr421) Rabbit pAb**

For Research Use Only. Not for Use in Diagnostic Procedures.

[Antibody](#) | [ELISA Kits](#) | [Protein](#) | [Reagents](#)