

MEK-4 (Phospho Thr261) Rabbit pAb

CatalogNo: YP0172

Orthogonal Validated 

Key Features

Host Species

- Rabbit

Reactivity

- Human, Mouse, Rat

Applications

- WB, IHC, IF, ELISA

MW

- 48kD (Observed)

Isotype

- IgG

Recommended Dilution Ratios

WB 1:500-1:2000

IHC 1:100-1:300

ELISA 1:10000

IF 1:50-200

Storage

Storage*

-15°C to -25°C/1 year (Do not lower than -25°C)

Formulation

Liquid in PBS containing 50% glycerol, 0.5% BSA and 0.02% sodium azide.

Basic Information

Clonality

Polyclonal

Immunogen Information

Immunogen

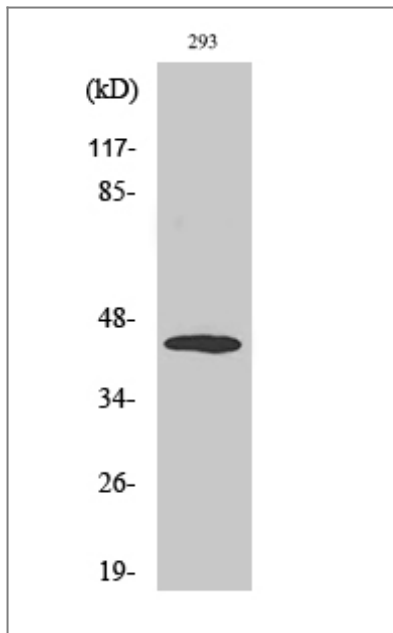
The antiserum was produced against synthesized peptide derived from human SEK1/MKK4 around the phosphorylation site of Thr261. AA range: 227-276

Specificity Phospho-MEK-4 (T261) Polyclonal Antibody detects endogenous levels of MEK-4 protein only when phosphorylated at T261. The name of modified sites may be influenced by many factors, such as species (the modified site was not originally found in human samples) and the change of protein sequence (the previous protein sequence is incomplete, and the protein sequence may be prolonged with the development of protein sequencing technology). When naming, we will use the "numbers" in historical reference to keep the sites consistent with the reports. The antibody binds to the following modification sequence (lowercase letters are modification sites):AKtRD

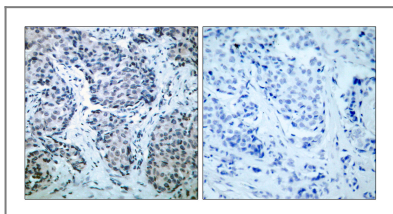
| Target Information

Gene name	MAP2K4		
Protein Name	Dual specificity mitogen-activated protein kinase kinase 4		
	Organism	Gene ID	UniProt ID
	Human	6416 ;	P45985 ;
	Mouse	26398 ;	P47809 ;
Cellular Localization	Cytoplasm . Nucleus .		
Tissue specificity	Abundant expression is seen in the skeletal muscle. It is also widely expressed in other tissues.		
Function	Catalytic activity:ATP + a protein = ADP + a phosphoprotein.,Function: Dual specificity kinase that activates the JUN kinases MAPK8 (JNK1) and MAPK9 (JNK2) as well as MAPK14 (p38) but not MAPK1 (ERK2) or MAPK3 (ERK1).,PTM: Activated by phosphorylation on Ser/Thr by MAP kinase kinase kinases.,similarity: Belongs to the protein kinase superfamily.,similarity: Belongs to the protein kinase superfamily. STE Ser/Thr protein kinase family. MAP kinase kinase subfamily.,similarity: Contains 1 protein kinase domain.,subunit: Interacts with SPAG9.,tissue specificity: Abundant expression is seen in the skeletal muscle. It is also widely expressed in other tissues.,		

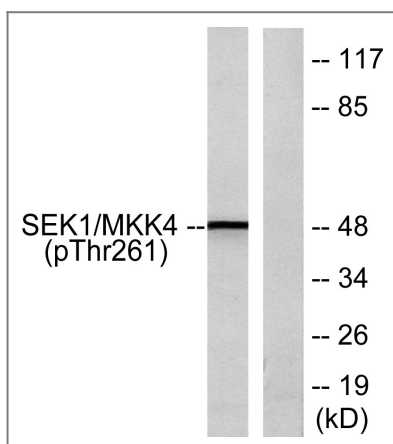
| Validation Data



Western Blot analysis of various cells using Phospho-MEK-4 (T261) Polyclonal Antibody



Immunohistochemistry analysis of paraffin-embedded human breast carcinoma, using SEK1/MKK4 (Phospho-Thr261) Antibody. The picture on the right is blocked with the phospho peptide.



Western blot analysis of lysates from 293 cells treated with UV 15', using SEK1/MKK4 (Phospho-Thr261) Antibody. The lane on the right is blocked with the phospho peptide.

Contact information

Orders: order.cn@immunoway.com
 Support: support.cn@immunoway.com
 Telephone: 400-8787-807(China)
 Website: <http://www.immunoway.com.cn>
 Address: 2200 Ringwood Ave San Jose, CA 95131 USA



Please scan the QR code to access additional product information:
MEK-4 (Phospho Thr261) Rabbit pAb