

## Jun D (Phospho Ser255) Rabbit pAb

CatalogNo: YP0160

Orthogonal Validated 

Comparable Abs 

### Key Features

#### Host Species

- Rabbit

#### Reactivity

- Human, Mouse, Rat

#### Applications

- WB, IHC, IF, IP, ELISA

#### MW

- 35kD (Calculated)

#### Isotype

- IgG

### Storage

**Storage\*** -15°C to -25°C/1 year (Do not lower than -25°C)

**Formulation** Liquid in PBS containing 50% glycerol, 0.5% BSA and 0.02% sodium azide.

### Recommended Dilution Ratios

**WB 1:500-1:2000**

**IHC 1:100-1:300**

**IP 2-5 ug/mg lysate**

**ELISA 1:20000**

**IF 1:50-200**

### Basic Information

**Clonality** Polyclonal

### Immunogen Information

**Immunogen** The antiserum was produced against synthesized peptide derived from human JunD around the phosphorylation site of Ser255. AA range:222-271

## Specificity

Phospho-Jun D (S255) Polyclonal Antibody detects endogenous levels of Jun D protein only when phosphorylated at S255. The name of modified sites may be influenced by many factors, such as species (the modified site was not originally found in human samples) and the change of protein sequence (the previous protein sequence is incomplete, and the protein sequence may be prolonged with the development of protein sequencing technology). When naming, we will use the "numbers" in historical reference to keep the sites consistent with the reports. The antibody binds to the following modification sequence (lowercase letters are modification sites):GESPP

## Target Information

**Gene name** JUND

**Protein Name** Transcription factor jun-D

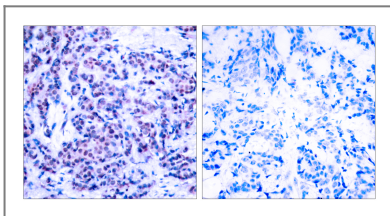
Organism	Gene ID	UniProt ID
Human	<a href="#">3727;</a>	<a href="#">P17535;</a>
Mouse	<a href="#">16478;</a>	<a href="#">P15066;</a>
Rat	<a href="#">24518;</a>	<a href="#">P52909;</a>

**Cellular Localization** Nucleus.

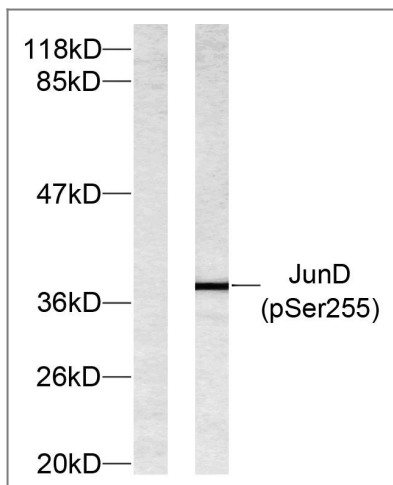
**Tissue specificity** Epithelium,Spleen,

**Function** Function: Binds an AP-1 site and upon cotransfection stimulates the activity of a promoter that bears an AP-1 site.,similarity: Belongs to the bZIP family. Jun subfamily.,similarity: Contains 1 bZIP domain.,subunit: Binds DNA as a dimer.,

## Validation Data



Immunohistochemistry analysis of paraffin-embedded human breast carcinoma, using JunD (Phospho-Ser255) Antibody. The picture on the right is blocked with the phospho peptide.



Western blot analysis of lysates from 293 cells treated with Forskolin, using JunD (Phospho-Ser255) Antibody. The lane on the left is blocked with the phospho peptide.

## Contact information

Orders: [order.cn@immunoway.com](mailto:order.cn@immunoway.com)  
Support: [support.cn@immunoway.com](mailto:support.cn@immunoway.com)  
Telephone: 400-8787-807(China)  
Website: <http://www.immunoway.com.cn>  
Address: 2200 Ringwood Ave San Jose, CA 95131 USA



Please scan the QR code to access additional product information:  
**Jun D (Phospho Ser255) Rabbit pAb**

For Research Use Only. Not for Use in Diagnostic Procedures.

[Antibody](#) | [ELISA Kits](#) | [Protein](#) | [Reagents](#)