

IKK- α/β (Phospho Ser180/181) Rabbit pAb

CatalogNo: YP0142 **Orthogonal Validated** 

Key Features

Host Species

- Rabbit

Reactivity

- Human, Mouse, Rat

Applications

- WB, IHC, IF, ELISA

MW

- 85kD (Observed)

Isotype

- IgG

Storage

Storage* -15°C to -25°C/1 year (Do not lower than -25°C)

Formulation Liquid in PBS containing 50% glycerol, 0.5% BSA and 0.02% sodium azide.

Recommended Dilution Ratios

WB 1:500-1:2000

IHC 1:100-1:300

ELISA 1:20000

IF 1:50-200

Basic Information

Clonality Polyclonal

Immunogen Information

Immunogen The antiserum was produced against synthesized peptide derived from human IKK- α/β around the phosphorylation site of Ser180/181. AA range:151-200

Specificity

This antibody detects endogenous levels of IKK α / β only when phosphorylated at Human:S180/S181, Mouse:S180/S181, Rat:S180/S181..The name of modified sites may be influenced by many factors, such as species (the modified site was not originally found in human samples) and the change of protein sequence (the previous protein sequence is incomplete, and the protein sequence may be prolonged with the development of protein sequencing technology). When naming, we will use the "numbers" in historical reference to keep the sites consistent with the reports. The antibody binds to the following modification sequence (lowercase letters are modification sites):CTsFV

Target Information

Gene name CHUK/IKBKB

Protein Name Inhibitor of nuclear factor kappa-B kinase subunit alpha

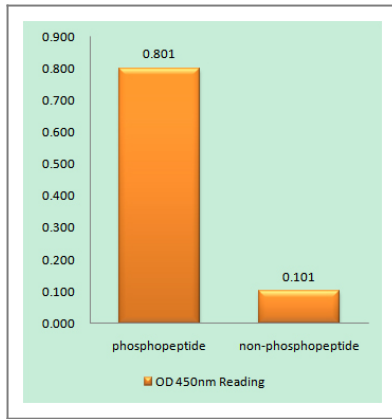
Organism	Gene ID	UniProt ID
Human	1147 ; 3551 ;	O15111 ; O14920 ;
Mouse	16150 ;	
Rat	84351 ;	Q9QY78 ;

Cellular Localization Cytoplasm . Nucleus . Shuttles between the cytoplasm and the nucleus.

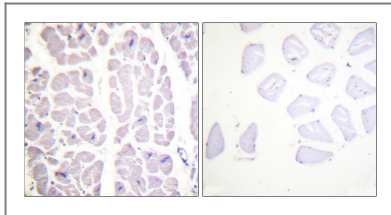
Tissue specificity Widely expressed.

Function Catalytic activity:ATP + [I-kappa-B protein] = ADP + [I-kappa-B phosphoprotein]. ,enzyme regulation:Activated when phosphorylated and inactivated when dephosphorylated. ,Function:Acts as part of the IKK complex in the conventional pathway of NF-kappa-B activation and phosphorylates inhibitors of NF-kappa-B thus leading to the dissociation of the inhibitor/NF-kappa-B complex and ultimately the degradation of the inhibitor. As part of the non-canonical pathway of NF-kappa-B activation , the MAP3K14-activated CHUK/IKKA homodimer phosphorylates NFKB2/p100 associated with RelB , inducing its proteolytic processing to NFKB2/p52 and the formation of NF-kappa-B RelB-p52 complexes. Also phosphorylates NCOA3. Phosphorylates 'Ser-10' of histone H3 at NF-kappa-B-regulated promoters during inflammatory responses triggered by cytokines. ,PTM:Phosphorylated by MAP3K14/NIK , AKT and to a lesser extent by MEKK1 , and dephosphorylated by PP2A. Autophosphorylated. ,similarity:Belongs to the protein kinase superfamily. ,similarity:Belongs to the protein kinase superfamily. Ser/Thr protein kinase family. I-kappa-B kinase subfamily. ,similarity:Contains 1 protein kinase domain. ,subcellular location:Shuttles between the cytoplasm and the nucleus. ,subunit:Component of the I-kappa-B-kinase (IKK) core complex consisting of CHUK , IKBKB and IKBKG; probably four alpha/CHUK-beta/IKBKB dimers are associated with four gamma/IKBKG subunits. The IKK core complex seems to associate with regulatory or adapter proteins to form a IKK-signalosome holo-complex. Part of a complex composed of NCOA2 , NCOA3 , CHUK/IKKA , IKBKB , IKBKG and CREBBP. Part of a 70-90 kDa complex at least consisting of CHUK/IKKA , IKBKB , NFKBIA , RELA , IKBKAP and MAP3K14. Directly interacts with IKK-gamma/NEMO and TRPC4AP (By similarity) . May interact with TRAF2. Interacts with NALP2. May interact with MAVS/IPS1. ,tissue specificity:Widely expressed. ,

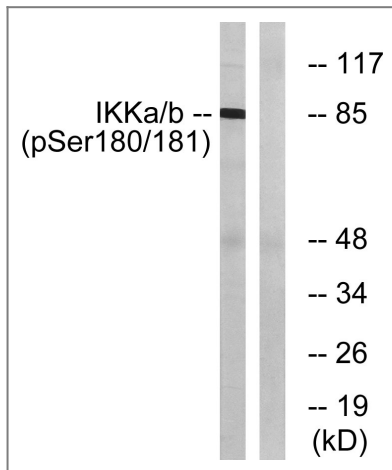
Validation Data



Enzyme-Linked Immunosorbent Assay (Phospho-ELISA) for Immunogen Phosphopeptide (Phospho-left) and Non-Phosphopeptide (Phospho-right), using IKK-alpha/beta (Phospho-Ser180/181) Antibody



Immunohistochemistry analysis of paraffin-embedded human heart, using IKK-alpha/beta (Phospho-Ser180/181) Antibody. The picture on the right is blocked with the phospho peptide.



Western blot analysis of lysates from HepG2 cells treated with TNF 20ng/ml 5', using IKK-alpha/beta (Phospho-Ser180/181) Antibody. The lane on the right is blocked with the phospho peptide.

Contact information

Orders: order.cn@immunoway.com
Support: support.cn@immunoway.com
Telephone: 400-8787-807(China)
Website: <http://www.immunoway.com.cn>
Address: 2200 Ringwood Ave San Jose, CA 95131 USA



Please scan the QR code to access additional product information:
IKK- α/β (Phospho Ser180/181) Rabbit pAb