

## GRF-1 (Phospho Tyr1087) Rabbit pAb

CatalogNo: YP0121

### Key Features

#### Host Species

- Rabbit

#### Reactivity

- Human, Mouse, Rat

#### Applications

- WB, ELISA

#### MW

- 190kD (Observed)

#### Isotype

- IgG

### Storage

**Storage\*** -15°C to -25°C/1 year (Do not lower than -25°C)

**Formulation** Liquid in PBS containing 50% glycerol, 0.5% BSA and 0.02% sodium azide.

### Recommended Dilution Ratios

**WB 1:500-1:2000**

**ELISA 1:10000**

**Not yet tested in other applications.**

### Basic Information

**Clonality** Polyclonal

### Immunogen Information

**Immunogen** Synthesized phospho-peptide around the phosphorylation site of human GRF-1 (phospho Tyr1087)

**Specificity** Phospho-GRF-1 (Y1087) Polyclonal Antibody detects endogenous levels of GRF-1 protein only when phosphorylated at Y1087. The name of modified sites may be influenced by many factors, such as species (the modified site was not originally found in human samples) and the change of protein sequence (the previous protein sequence is incomplete, and the protein sequence may be prolonged with the development of protein sequencing technology). When naming, we will use the "numbers" in historical reference to keep the sites consistent with the reports. The antibody binds to the following modification sequence (lowercase letters are modification sites):SDyAE

## Target Information

**Gene name** ARHGAP35

**Protein Name** Rho GTPase-activating protein 35

Organism	Gene ID	UniProt ID
Human	<a href="#">2909</a> ;	<a href="#">Q9NRY4</a> ;
Mouse	<a href="#">232906</a> ;	<a href="#">Q91YM2</a> ;
Rat		<a href="#">P81128</a> ;

**Cellular Localization**

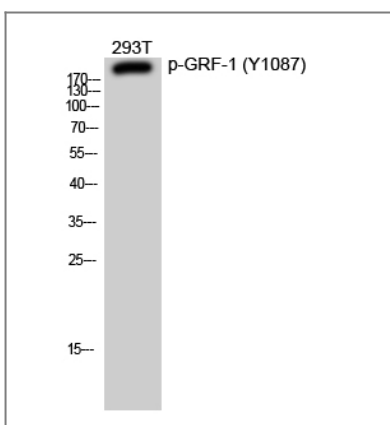
Cytoplasm , cytoskeleton , cilium basal body . Cytoplasm . Nucleus . Cell membrane . In response to integrins and SDC4 and upon phosphorylation by PKC , relocalizes from the cytoplasm to regions of plasma membrane ruffling where it colocalizes with polymerized actin. .

**Tissue specificity** Detected in neutrophils (at protein level) .

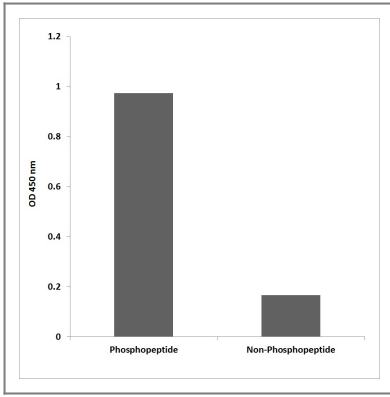
**Function**

Function:Represses transcription of the glucocorticoid receptor by binding to the cis-acting regulatory sequence 5'-GAGAAAAGAACTGGAGAACTC-3'. May participate in the regulation of retinal development and degeneration. May transduce signals from p21-ras to the nucleus , acting via the ras GTPase-activating protein (GAP) . May also act as a tumor suppressor. ,PTM:Phosphorylated upon DNA damage , probably by ATM or ATR. ,PTM:Tyrosine phosphorylated. ,similarity:Contains 1 Rho-GAP domain. ,similarity:Contains 4 FF domains. ,subunit:Interacts with p120GAP. ,

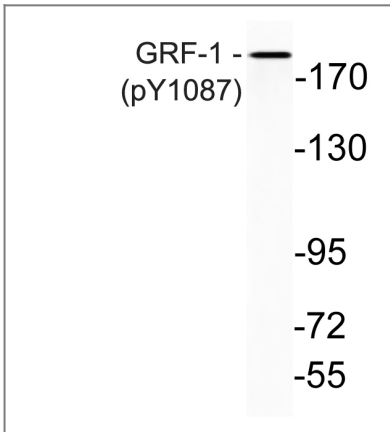
## Validation Data



Western Blot analysis of 293T cells using Phospho-GRF-1 (Y1087) Polyclonal Antibody diluted at 1:1000



Enzyme-Linked Immunosorbent Assay (Phospho-ELISA) for Immunogen Phosphopeptide (Phospho-left) and Non-Phosphopeptide (Phospho-right), using GRF-1 (Phospho-Tyr1087) Antibody



Western blot analysis of lysates from K562 cells, using phospho-GRF-1 (Phospho-Tyr1087) antibody.

## Contact information

Orders: order.cn@immunoway.com  
 Support: support.cn@immunoway.com  
 Telephone: 400-8787-807(China)  
 Website: <http://www.immunoway.com.cn>  
 Address: 2200 Ringwood Ave San Jose, CA 95131 USA



Please scan the QR code to access additional product information:  
**GRF-1 (Phospho Tyr1087) Rabbit pAb**

For Research Use Only. Not for Use in Diagnostic Procedures.

[Antibody](#) | [ELISA Kits](#) | [Protein](#) | [Reagents](#)