

GAP43 (Phospho Ser41) Rabbit pAb

CatalogNo: YP0119

Key Features

Host Species

- Rabbit

Reactivity

- Human, Mouse, Rat

Applications

- IF, ELISA

MW

- 25kD (Calculated)

Isotype

- IgG

Storage

Storage* -15°C to -25°C/1 year (Do not lower than -25°C)

Formulation Liquid in PBS containing 50% glycerol, 0.5% BSA and 0.02% sodium azide.

Recommended Dilution Ratios

IF 1:200-1:1000

ELISA 1:20000

Not yet tested in other applications

Basic Information

Clonality Polyclonal

Immunogen Information

Immunogen The antiserum was produced against synthesized peptide derived from human GAP43 around the phosphorylation site of Ser41. AA range:8-57

Specificity Phospho-GAP-43 (S41) Polyclonal Antibody detects endogenous levels of GAP-43 protein only when phosphorylated at S41. The name of modified sites may be influenced by many factors, such as species (the modified site was not originally found in human samples) and the change of protein sequence (the previous protein sequence is incomplete, and the protein sequence may be prolonged with the development of protein sequencing technology). When naming, we will use the "numbers" in historical reference to keep the sites consistent with the reports. The antibody binds to the following modification sequence (lowercase letters are modification sites):QAsFR

Target Information

Gene name GAP43

Protein Name Neuromodulin

Organism	Gene ID	UniProt ID
Human	2596;	P17677;
Mouse	14432;	P06837;
Rat	29423;	P07936;

Cellular Localization

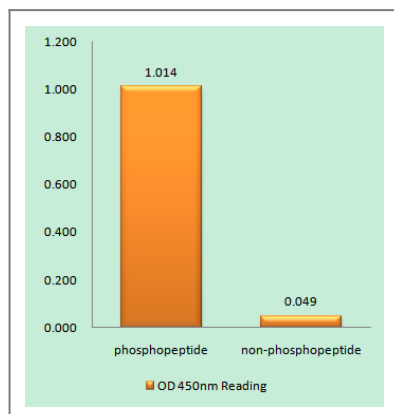
Cell membrane ; Peripheral membrane protein ; Cytoplasmic side . Cell projection , growth cone membrane ; Peripheral membrane protein ; Cytoplasmic side . Cell junction , synapse . Cell projection , filopodium membrane ; Peripheral membrane protein . Perikaryon . Cell projection , dendrite . Cell projection , axon . Cytoplasm . Cytoplasmic surface of growth cone and synaptic plasma membranes. .

Tissue specificity Alzheimer cortex ,Brain ,Subthalamic nucleus ,

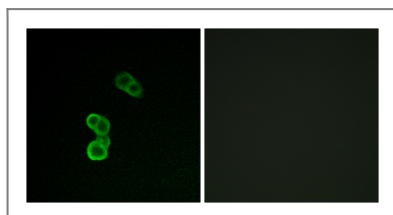
Function

Function:This protein is associated with nerve growth. It is a major component of the motile "growth cones" that form the tips of elongating axons. ,online information:Gap-43 entry ,PTM:Phosphorylation of this protein by a protein kinase C is specifically correlated with certain forms of synaptic plasticity. ,similarity:Belongs to the neuromodulin family. ,similarity:Contains 1 IQ domain. ,subcellular location:Cytoplasmic surface of growth cone and synaptic plasma membranes. ,subunit:Binds calmodulin with a greater affinity in the absence of Ca (2+) than in its presence. ,

Validation Data



Enzyme-Linked Immunosorbent Assay (Phospho-ELISA) for Immunogen Phosphopeptide (Phospho-left) and Non-Phosphopeptide (Phospho-right), using GAP43 (Phospho-Ser41) Antibody



Immunofluorescence analysis of MCF-7 cells, using GAP43 (Phospho-Ser41) Antibody. The picture on the right is blocked with the phospho peptide.

| Contact information

Orders: order.cn@immunoway.com
Support: support.cn@immunoway.com
Telephone: 400-8787-807(China)
Website: <http://www.immunoway.com.cn>
Address: 2200 Ringwood Ave San Jose, CA 95131 USA



Please scan the QR code to access additional product information:
GAP43 (Phospho Ser41) Rabbit pAb

For Research Use Only. Not for Use in Diagnostic Procedures.

[Antibody](#) | [ELISA Kits](#) | [Protein](#) | [Reagents](#)