

## Ezrin (Phospho Tyr353) Rabbit pAb

CatalogNo: YP0107 **Orthogonal Validated** 

### Key Features

#### Host Species

- Rabbit

#### Reactivity

- Human, Mouse, Rat

#### Applications

- WB, ELISA

#### MW

- 69kD (Observed)

#### Isotype

- IgG

### Storage

**Storage\*** -15°C to -25°C/1 year (Do not lower than -25°C)

**Formulation** Liquid in PBS containing 50% glycerol, 0.5% BSA and 0.02% sodium azide.

### Recommended Dilution Ratios

**WB 1:500-1:2000**

**ELISA 1:20000**

**Not yet tested in other applications.**

### Basic Information

**Clonality** Polyclonal

### Immunogen Information

**Immunogen** The antiserum was produced against synthesized peptide derived from human Ezrin around the phosphorylation site of Tyr353. AA range:321-370

**Specificity** Phospho-Ezrin (Y353) Polyclonal Antibody detects endogenous levels of Ezrin protein only when phosphorylated at Y353. The name of modified sites may be influenced by many factors, such as species (the modified site was not originally found in human samples) and the change of protein sequence (the previous protein sequence is incomplete, and the protein sequence may be prolonged with the development of protein sequencing technology). When naming, we will use the "numbers" in historical reference to keep the sites consistent with the reports. The antibody binds to the following modification sequence (lowercase letters are modification sites):QDyEE

---

## | Target Information

**Gene name** EZR

**Protein Name** Ezrin

Organism	Gene ID	UniProt ID
Human	<a href="#">7430;</a>	<a href="#">P15311;</a>
Mouse	<a href="#">22350;</a>	<a href="#">P26040;</a>
Rat	<a href="#">54319;</a>	<a href="#">P31977;</a>

**Cellular Localization**

Apical cell membrane ; Peripheral membrane protein ; Cytoplasmic side . Cell projection . Cell projection , microvillus membrane ; Peripheral membrane protein ; Cytoplasmic side . Cell projection , ruffle membrane ; Peripheral membrane protein ; Cytoplasmic side . Cytoplasm , cell cortex . Cytoplasm , cytoskeleton . Cell projection , microvillus . Localization to the apical membrane of parietal cells depends on the interaction with PALS1. Localizes to cell extensions and peripheral processes of astrocytes (By similarity) . Microvillar peripheral membrane protein (cytoplasmic side) . .

**Tissue specificity**

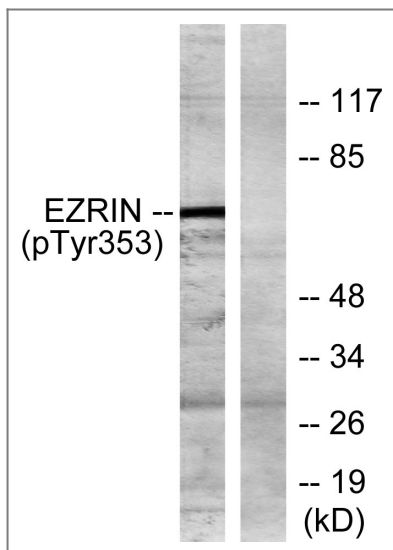
Expressed in cerebral cortex , basal ganglia , hippocampus , hypophysis , and optic nerve. Weakly expressed in brain stem and diencephalon. Stronger expression was detected in gray matter of frontal lobe compared to white matter (at protein level) . Component of the microvilli of intestinal epithelial cells. Preferentially expressed in astrocytes of hippocampus , frontal cortex , thalamus , parahippocampal cortex , amygdala , insula , and corpus callosum. Not detected in neurons in most tissues studied.

**Function**

developmental stage:Very strong staining is detected in the Purkinje cell layer and in part of the molecular layer of the infant brain compared to adult brain. ,Function:Probably involved in connections of major cytoskeletal structures to the plasma membrane. In epithelial cells , required for the formation of microvilli and membrane ruffles on the apical pole. Along with PLEKHG6 , required for normal macropinocytosis. ,PTM:Phosphorylated by tyrosine-protein kinases. ,similarity:Contains 1 FERM domain. ,subcellular location:Localization to the apical membrane of parietal cells depends on the interaction with MPP5. Localizes to cell extensions and peripheral processes of astrocytes (By similarity) . Microvillar peripheral membrane protein (cytoplasmic side) . ,subunit:Interacts with MPP5 (By similarity) . Interacts with SLC9A3R1 and SCYL3/PACE1. Interacts with PLEKHG6. Interacts with NGX6. ,tissue specificity:Expressed in cerebral cortex , basal ganglia , hippocampus , hypophysis , and optic nerve. Weakly expressed in brain stem and diencephalon. Stronger expression was detected in gray matter of frontal lobe compared to white matter (at protein level) . Component of the microvilli of intestinal epithelial cells. Preferentially expressed in astrocytes of hippocampus , frontal cortex , thalamus , parahippocampal cortex , amygdala , insula , and corpus callosum. Not detected in neurons in most tissues studied. ,

---

## | Validation Data



Western blot analysis of lysates from A431 cells treated with EGF 200ng/ml 30', using Ezrin (Phospho-Tyr353) Antibody. The lane on the right is blocked with the phospho peptide.

## Contact information

Orders: [order.cn@immunoway.com](mailto:order.cn@immunoway.com)  
Support: [support.cn@immunoway.com](mailto:support.cn@immunoway.com)  
Telephone: 400-8787-807(China)  
Website: <http://www.immunoway.com.cn>  
Address: 2200 Ringwood Ave San Jose, CA 95131 USA



Please scan the QR code to access additional product information:  
**Ezrin (Phospho Tyr353) Rabbit pAb**

For Research Use Only. Not for Use in Diagnostic Procedures.

[Antibody](#) | [ELISA Kits](#) | [Protein](#) | [Reagents](#)