

Ezrin (Phospho Thr566) Rabbit pAb

CatalogNo: YP0106 **Orthogonal Validated** 

Key Features

Host Species

- Rabbit

Reactivity

- Human, Mouse, Rat

Applications

- WB, ELISA

MW

- 69kD (Observed)

Isotype

- IgG

Storage

Storage* -15°C to -25°C/1 year (Do not lower than -25°C)

Formulation Liquid in PBS containing 50% glycerol, 0.5% BSA and 0.02% sodium azide.

Recommended Dilution Ratios

WB 1:500-1:2000

ELISA 1:20000

Not yet tested in other applications.

Basic Information

Clonality Polyclonal

Immunogen Information

Immunogen The antiserum was produced against synthesized peptide derived from human Ezrin around the phosphorylation site of Thr566. AA range:534-583

Specificity Phospho-Ezrin (T566) Polyclonal Antibody detects endogenous levels of Ezrin protein only when phosphorylated at T566. The name of modified sites may be influenced by many factors, such as species (the modified site was not originally found in human samples) and the change of protein sequence (the previous protein sequence is incomplete, and the protein sequence may be prolonged with the development of protein sequencing technology). When naming, we will use the "numbers" in historical reference to keep the sites consistent with the reports. The antibody binds to the following modification sequence (lowercase letters are modification sites):YKtLR

| Target Information

Gene name EZR

Protein Name Ezrin

Organism	Gene ID	UniProt ID
Human	7430;	P15311;
Mouse	22350;	P26040;
Rat	54319;	P31977;

Cellular Localization

Apical cell membrane ; Peripheral membrane protein ; Cytoplasmic side . Cell projection . Cell projection , microvillus membrane ; Peripheral membrane protein ; Cytoplasmic side . Cell projection , ruffle membrane ; Peripheral membrane protein ; Cytoplasmic side . Cytoplasm , cell cortex . Cytoplasm , cytoskeleton . Cell projection , microvillus . Localization to the apical membrane of parietal cells depends on the interaction with PALS1. Localizes to cell extensions and peripheral processes of astrocytes (By similarity) . Microvillar peripheral membrane protein (cytoplasmic side) . .

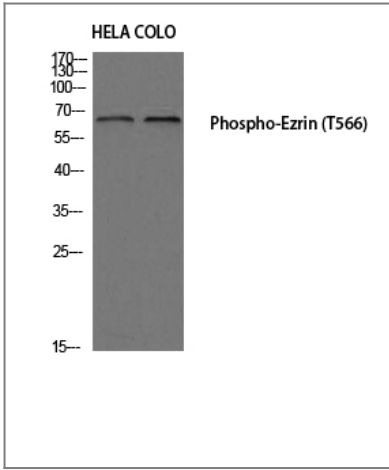
Tissue specificity

Expressed in cerebral cortex , basal ganglia , hippocampus , hypophysis , and optic nerve. Weakly expressed in brain stem and diencephalon. Stronger expression was detected in gray matter of frontal lobe compared to white matter (at protein level) . Component of the microvilli of intestinal epithelial cells. Preferentially expressed in astrocytes of hippocampus , frontal cortex , thalamus , parahippocampal cortex , amygdala , insula , and corpus callosum. Not detected in neurons in most tissues studied.

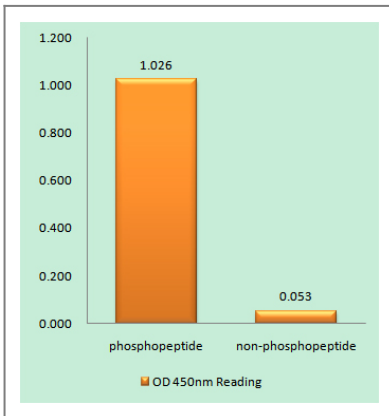
Function

developmental stage:Very strong staining is detected in the Purkinje cell layer and in part of the molecular layer of the infant brain compared to adult brain. ,Function:Probably involved in connections of major cytoskeletal structures to the plasma membrane. In epithelial cells , required for the formation of microvilli and membrane ruffles on the apical pole. Along with PLEKHG6 , required for normal macropinocytosis. ,PTM:Phosphorylated by tyrosine-protein kinases. ,similarity:Contains 1 FERM domain. ,subcellular location:Localization to the apical membrane of parietal cells depends on the interaction with MPP5. Localizes to cell extensions and peripheral processes of astrocytes (By similarity) . Microvillar peripheral membrane protein (cytoplasmic side) . ,subunit:Interacts with MPP5 (By similarity) . Interacts with SLC9A3R1 and SCYL3/PACE1. Interacts with PLEKHG6. Interacts with NGX6. ,tissue specificity:Expressed in cerebral cortex , basal ganglia , hippocampus , hypophysis , and optic nerve. Weakly expressed in brain stem and diencephalon. Stronger expression was detected in gray matter of frontal lobe compared to white matter (at protein level) . Component of the microvilli of intestinal epithelial cells. Preferentially expressed in astrocytes of hippocampus , frontal cortex , thalamus , parahippocampal cortex , amygdala , insula , and corpus callosum. Not detected in neurons in most tissues studied. ,

| Validation Data



Western blot analysis of HELA COLO using Phospho-Ezrin (T566) antibody. Antibody was diluted at 1:1000



Enzyme-Linked Immunosorbent Assay (Phospho-ELISA) for Immunogen Phosphopeptide (Phospho-left) and Non-Phosphopeptide (Phospho-right), using Ezrin (Phospho-Thr566) Antibody

Contact information

Orders: order.cn@immunoway.com
 Support: support.cn@immunoway.com
 Telephone: 400-8787-807(China)
 Website: <http://www.immunoway.com.cn>
 Address: 2200 Ringwood Ave San Jose, CA 95131 USA



Please scan the QR code to access additional product information:
Ezrin (Phospho Thr566) Rabbit pAb

For Research Use Only. Not for Use in Diagnostic Procedures.

[Antibody](#) | [ELISA Kits](#) | [Protein](#) | [Reagents](#)