

EGFR (Phospho Tyr1172) Rabbit pAb

CatalogNo: YP0090 **Orthogonal Validated** 

Key Features

Host Species

- Rabbit

Reactivity

- Human, Mouse, Rat

Applications

- WB, ELISA

MW

- 175kD (Observed)

Isotype

- IgG

Storage

Storage* -15°C to -25°C/1 year (Do not lower than -25°C)

Formulation Liquid in PBS containing 50% glycerol, 0.5% BSA and 0.02% sodium azide.

Recommended Dilution Ratios

WB 1:500-1:2000

ELISA 1:10000

Not yet tested in other applications.

Basic Information

Clonality Polyclonal

Immunogen Information

Immunogen The antiserum was produced against synthesized peptide derived from human EGFR around the phosphorylation site of Tyr1172. AA range:1139-1188

Specificity Phospho-EGFR (Y1172) Polyclonal Antibody detects endogenous levels of EGFR protein only when phosphorylated at Y1172. The name of modified sites may be influenced by many factors, such as species (the modified site was not originally found in human samples) and the change of protein sequence (the previous protein sequence is incomplete, and the protein sequence may be prolonged with the development of protein sequencing technology). When naming, we will use the "numbers" in historical reference to keep the sites consistent with the reports. The antibody binds to the following modification sequence (lowercase letters are modification sites):PDyQQ

| Target Information

Gene name EGFR ERBB ERBB1 HER1

Protein Name Epidermal growth factor receptor

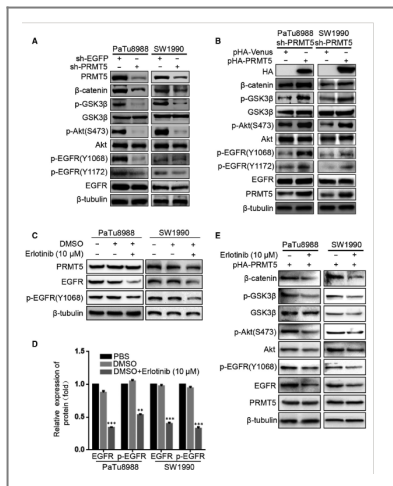
Organism	Gene ID	UniProt ID
Human	1956 ;	P00533 ;
Mouse	13649 ;	Q01279 ;

Cellular Localization Cell membrane ; Single-pass type I membrane protein . Endoplasmic reticulum membrane ; Single-pass type I membrane protein. Golgi apparatus membrane; Single-pass type I membrane protein. Nucleus membrane; Single-pass type I membrane protein. Endosome . Endosome membrane. Nucleus . In response to EGF , translocated from the cell membrane to the nucleus via Golgi and ER (PubMed:20674546 , PubMed:17909029) . Endocytosed upon activation by ligand (PubMed:2790960 , PubMed:17182860 , PubMed:27153536 , PubMed:17909029) . Colocalized with GPER1 in the nucleus of estrogen agonist-induced cancer-associated fibroblasts (CAF) (PubMed:20551055) . . ; [Isoform 2]: Secreted.

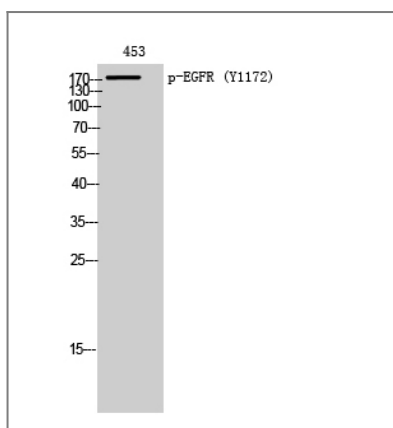
Tissue specificity Ubiquitously expressed. Isoform 2 is also expressed in ovarian cancers.

Function Catalytic activity:ATP + a [protein]-L-tyrosine = ADP + a [protein]-L-tyrosine phosphate. ,Disease:Defects in EGFR are associated with lung cancer [MIM:211980]. ,Function:Isoform 2/truncated isoform may act as an antagonist. ,Function:Receptor for EGF , but also for other members of the EGF family , as TGF-alpha , amphiregulin , betacellulin , heparin-binding EGF-like growth factor , GP30 and vaccinia virus growth factor. Is involved in the control of cell growth and differentiation. Phosphorylates MUC1 in breast cancer cells and increases the interaction of MUC1 with C-SRC and CTNNB1/beta-catenin. ,miscellaneous:Binding of EGF to the receptor leads to dimerization , internalization of the EGF-receptor complex , induction of the tyrosine kinase activity , stimulation of cell DNA synthesis , and cell proliferation. ,online information:EGFR entry ,PTM:Monoubiquitinated and polyubiquitinated upon EGF stimulation; which does not affect tyrosine kinase activity or signaling capacity but may play a role in lysosomal targeting. Polyubiquitin linkage is mainly through 'Lys-63' , but linkage through 'Lys-48' , 'Lys-11' and 'Lys-29' also occur. ,PTM:Phosphorylation of Ser-695 is partial and occurs only if Thr-693 is phosphorylated. ,similarity:Belongs to the protein kinase superfamily. Tyr protein kinase family. ,similarity:Belongs to the protein kinase superfamily. Tyr protein kinase family. EGF receptor subfamily. ,similarity:Contains 1 protein kinase domain. ,subunit:Binds RIPK1. CBL interacts with the autophosphorylated C-terminal tail of the EGF receptor. Part of a complex with ERBB2 and either PIK3C2A or PIK3C2B. The autophosphorylated form interacts with PIK3C2B , maybe indirectly. Interacts with PELP1. Binds MUC1. ,tissue specificity:Ubiquitously expressed. Isoform 2 is also expressed in ovarian cancers. ,

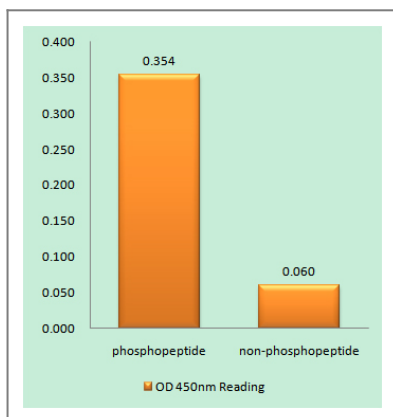
| Validation Data



Ge, Lu, et al. "PRMT5 promotes epithelial-mesenchymal transition via EGFR- β -catenin axis in pancreatic cancer cells." *Journal of cellular and molecular medicine* 24.2 (2020): 1969-1979.



Western Blot analysis of 453 cells using Phospho-EGFR (Y1172) Polyclonal Antibody diluted at 1:2000



Enzyme-Linked Immunosorbent Assay (Phospho-ELISA) for Immunogen Phosphopeptide (Phospho-left) and Non-Phosphopeptide (Phospho-right), using EGFR (Phospho-Tyr1172) Antibody

Contact information

Orders: order.cn@immunoway.com
 Support: support.cn@immunoway.com
 Telephone: 400-8787-807(China)
 Website: <http://www.immunoway.com.cn>
 Address: 2200 Ringwood Ave San Jose, CA 95131 USA



Please scan the QR code to access additional product information:
EGFR (Phospho Tyr1172) Rabbit pAb

