

Src (Phospho Tyr529) Rabbit pAb

CatalogNo: YP0078 **Orthogonal Validated** 

Key Features

Host Species

- Rabbit

Reactivity

- Human, Mouse, Rat, Monkey

Applications

- WB, IHC, IF, ELISA

MW

- 59kD (Observed)

Isotype

- IgG

Storage

Storage* -15°C to -25°C/1 year (Do not lower than -25°C)

Formulation Liquid in PBS containing 50% glycerol, 0.5% BSA and 0.02% sodium azide.

Recommended Dilution Ratios

WB 1:500-1:2000

IHC 1:100-1:300

ELISA 1:10000

IF 1:50-200

Basic Information

Clonality Polyclonal

Immunogen Information

Immunogen The antiserum was produced against synthesized peptide derived from human Src around the phosphorylation site of Tyr529. AA range:487-536

Specificity

Phospho-c-Src (Y529) Polyclonal Antibody detects endogenous levels of c-Src protein only when phosphorylated at Y529. The name of modified sites may be influenced by many factors, such as species (the modified site was not originally found in human samples) and the change of protein sequence (the previous protein sequence is incomplete, and the protein sequence may be prolonged with the development of protein sequencing technology). When naming, we will use the "numbers" in historical reference to keep the sites consistent with the reports. The antibody binds to the following modification sequence (lowercase letters are modification sites):PQyQP

Target Information

Gene name SRC SRC1

Protein Name Proto-oncogene tyrosine-protein kinase Src

Organism	Gene ID	UniProt ID
Human	6714 ;	P12931 ;
Mouse	20779 ;	P05480 ;
Rat		Q9WUD9 ;

Cellular Localization

Cell membrane ; Lipid-anchor . Mitochondrion inner membrane . Nucleus . Cytoplasm , cytoskeleton . Cytoplasm , perinuclear region . Cell junction , focal adhesion . Localizes to focal adhesion sites following integrin engagement (PubMed:22801373) . Localization to focal adhesion sites requires myristoylation and the SH3 domain (PubMed:7525268) . Colocalizes with PDLIM4 at the perinuclear region , but not at focal adhesions (PubMed:19307596) . .

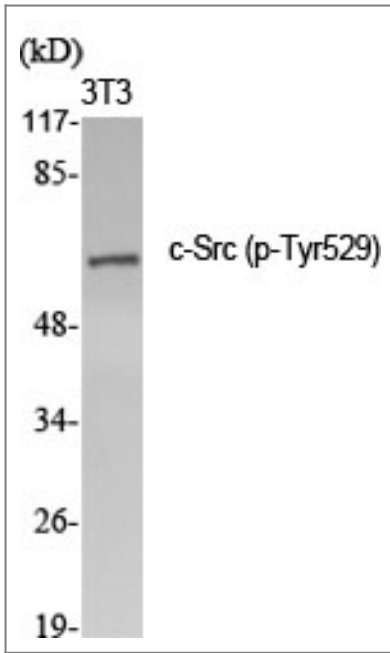
Tissue specificity

Expressed ubiquitously. Platelets , neurons and osteoclasts express 5-fold to 200-fold higher levels than most other tissues.; [Isoform 1]: Expressed in spleen and liver. ; [Isoform 2]: Expressed in brain. ; [Isoform 3]: Expressed in brain.

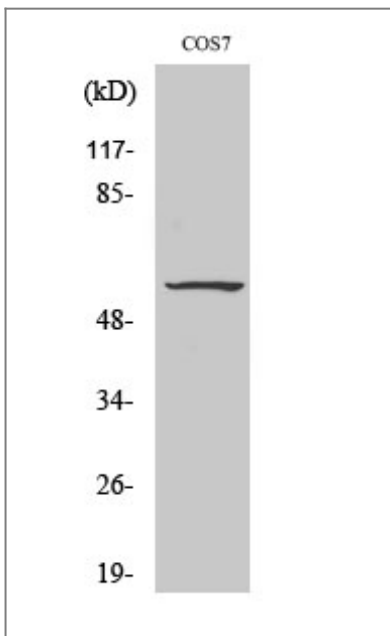
Function

Catalytic activity:ATP + a [protein]-L-tyrosine = ADP + a [protein]-L-tyrosine phosphate. ,PTM:Phosphorylated on Tyr-530 by c-Src kinase (CSK) . The phosphorylated form is termed pp60c-src. The phosphorylated tail interacts with the SH2 domain thereby repressing kinase activity. ,similarity:Belongs to the protein kinase superfamily. Tyr protein kinase family. SRC subfamily. ,similarity:Contains 1 protein kinase domain. ,similarity:Contains 1 SH2 domain. ,similarity:Contains 1 SH3 domain. ,subunit:Interacts with DDEF1/ASAP1; via the SH3 domain. Interacts with CCPG1 (By similarity) . Interacts with CDCP1 , PELP1 , TGFB1I1 and TOM1L2. Interacts with the cytoplasmic domain of MUC1 , phosphorylates it and increases binding of MUC1 with beta-catenin. Interacts with RALGPS1; via the SH3 domain. Interacts with HEV ORF3 protein; via the SH3 domain. ,

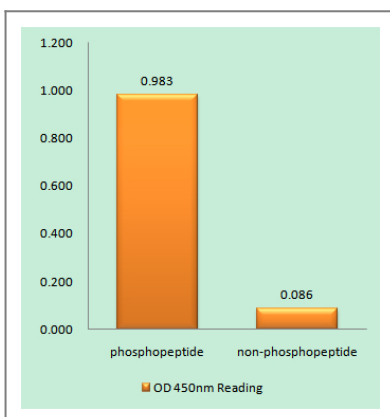
Validation Data



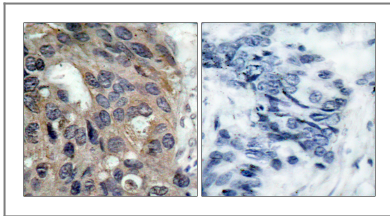
Western Blot analysis of various cells using Phospho-c-Src (Y529) Polyclonal Antibody diluted at 1:2000



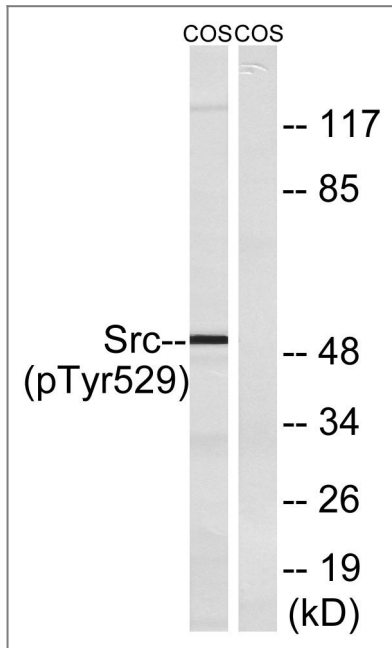
Western Blot analysis of COS7 cells using Phospho-c-Src (Y529) Polyclonal Antibody diluted at 1:2000



Enzyme-Linked Immunosorbent Assay (Phospho-ELISA) for Immunogen Phosphopeptide (Phospho-left) and Non-Phosphopeptide (Phospho-right), using Src (Phospho-Tyr529) Antibody



Immunohistochemistry analysis of paraffin-embedded human breast carcinoma, using Src (Phospho-Tyr529) Antibody. The picture on the right is blocked with the phospho peptide.



Western blot analysis of lysates from COS7 cells treated with PMA 125ng/ml 30', using Src (Phospho-Tyr529) Antibody. The lane on the right is blocked with the phospho peptide.

Contact information

Orders: order.cn@immunoway.com
Support: support.cn@immunoway.com
Telephone: 400-8787-807(China)
Website: <http://www.immunoway.com.cn>
Address: 2200 Ringwood Ave San Jose, CA 95131 USA



Please scan the QR code to access additional product information:
Src (Phospho-Tyr529) Rabbit pAb

For Research Use Only. Not for Use in Diagnostic Procedures.

[Antibody](#) | [ELISA Kits](#) | [Protein](#) | [Reagents](#)