

ATF-4 (Phospho Ser245) Rabbit pAb

CatalogNo: YP0076

Key Features

Host Species

- Rabbit

Reactivity

- Human,Rat,Mouse,

Applications

- IHC,IF(paraffin section),ELISA

Isotype

- IgG

Recommended Dilution Ratios

IHC 1:100 -300

ELISA 1:10000

Not yet tested in other applications.

Storage

Storage* -20°C/1 year

Formulation Liquid in PBS containing 50% glycerol, 0.5% BSA and 0.02% sodium azide.

Basic Information

Clonality Polyclonal

Immunogen Information

Immunogen The antiserum was produced against synthesized peptide derived from human ATF4 around the phosphorylation site of Ser245. AA range:212-261

Specificity Phospho-CREB-2 (S245) Polyclonal Antibody detects endogenous levels of CREB-2 protein only when phosphorylated at S245.The name of modified sites may be influenced by many factors, such as species (the modified site was not originally found in human samples) and the change of protein sequence (the previous protein sequence is incomplete, and the protein sequence may be prolonged with the development of protein sequencing technology). When naming, we will use the "numbers" in historical reference to keep the sites consistent with the reports. The antibody binds to the following modification sequence (lowercase letters are modification sites):NRsLP

| Target Information

Gene name ATF4

Protein Name Cyclic AMP-dependent transcription factor ATF-4

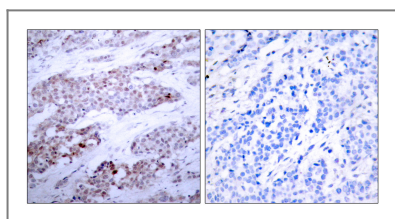
Organism	Gene ID	UniProt ID
Human	468;	P18848;
Mouse	11911;	Q06507;

Cellular Localization Nucleus . Nucleus speckle . Cytoplasm . Cell membrane . Cytoplasm, cytoskeleton, microtubule organizing center, centrosome . Colocalizes with GABBR1 in hippocampal neuron dendritic membranes (By similarity). Colocalizes with NEK6 at the centrosome (PubMed:20873783). Recruited to nuclear speckles following interaction with EP300/p300 (PubMed:16219772). .

Tissue specificity Bladder,Colon,Fibroblast,Leukemic T-cell,Lung,Ovary,Placenta,

Function Function:Transcriptional activator. Binds the cAMP response element (CRE) (consensus: 5'-GTGACGT[AC][AG]-3'), a sequence present in many viral and cellular promoters. It binds to a Tax-responsive enhancer element in the long terminal repeat of HTLV-I.,similarity:Belongs to the bZIP family.,similarity:Contains 1 bZIP domain.,subcellular location:Colocalizes with GABBR1 in hippocampal neuron dendritic membranes.,subunit:Interacts with the C-terminal region of GABBR1 via the leucine zipper of its C-terminal bZIP domain. Interacts with the C-terminal region of GABBR2 (By similarity). Binds DNA as a homo-or heterodimer. Interacts with the N-terminal region of CEP290.,

| Validation Data



Immunohistochemistry analysis of paraffin-embedded human breast carcinoma, using ATF4 (Phospho-Ser245) Antibody. The picture on the right is blocked with the phospho peptide.

| Contact information

Orders: order.cn@immunoway.com
Support: support.cn@immunoway.com
Telephone: 400-8787-807(China)
Website: <http://www.immunoway.com.cn>
Address: 2200 Ringwood Ave San Jose, CA 95131 USA



Please scan the QR code to access additional product information:
ATF-4 (Phospho Ser245) Rabbit pAb

