

CREB-1 (Phospho Ser129) Rabbit pAb

CatalogNo: YP0074

Key Features

Host Species

- Rabbit

Reactivity

- Human, Mouse, Rat

Applications

- IHC, IF, WB, ELISA

MW

- 37kD (Calculated)

Isotype

- IgG

Storage

Storage* -15°C to -25°C/1 year (Do not lower than -25°C)

Formulation Liquid in PBS containing 50% glycerol, 0.5% BSA and 0.02% sodium azide.

Recommended Dilution Ratios

WB 1:500-2000

IHC 1:100-1:300

IF 1:200-1:1000

ELISA 1:40000

Not yet tested in other applications.

Basic Information

Clonality Polyclonal

Immunogen Information

Immunogen The antiserum was produced against synthesized peptide derived from human CREB around the phosphorylation site of Ser129. AA range:96-145

Specificity

Phospho-CREB-1 (S129) Polyclonal Antibody detects endogenous levels of CREB-1 protein only when phosphorylated at S129. The name of modified sites may be influenced by many factors, such as species (the modified site was not originally found in human samples) and the change of protein sequence (the previous protein sequence is incomplete, and the protein sequence may be prolonged with the development of protein sequencing technology). When naming, we will use the "numbers" in historical reference to keep the sites consistent with the reports. The antibody binds to the following modification sequence (lowercase letters are modification sites):ILsRR

Target Information

Gene name CREB1

Protein Name Cyclic AMP-responsive element-binding protein 1

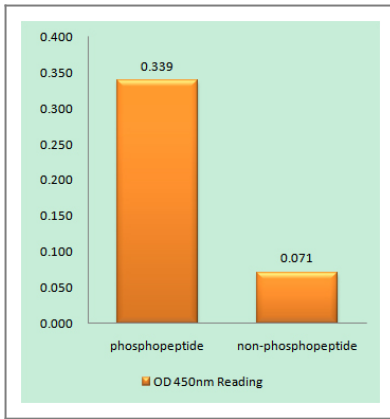
Organism	Gene ID	UniProt ID
Human	1385 ;	P16220 ;
Mouse	12912 ;	Q01147 ;
Rat	81646 ;	P15337 ;

Cellular Localization Nucleus .

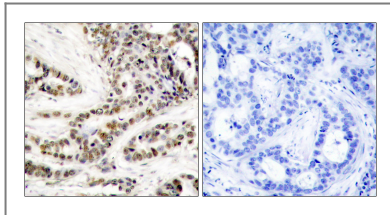
Tissue specificity Eye ,Placenta ,Spleen ,Testis ,

Function Disease:A chromosomal aberration involving CREB1 is associated with angiomatoid fibrous histiocytoma (AFH) [MIM:612160]. Translocation t (2;22) (q33;q12) with CREB1 generates a EWSR1/CREB1 fusion gene that is most common genetic abnormality in this tumor type. ,Function:This protein binds the cAMP response element (CRE) , a sequence present in many viral and cellular promoters. CREB stimulates transcription on binding to the CRE. Transcription activation is enhanced by the TORC coactivators which act independently of Ser-133 phosphorylation. Implicated in synchronization of circadian rhythmicity. ,PTM:Stimulated by phosphorylation. Phosphorylation of both Ser-133 and Ser-142 in the SCN regulates the activity of CREB and participates in circadian rhythm generation. Phosphorylation of Ser-133 allows CREBBP binding (By similarity) . Phosphorylated upon DNA damage , probably by ATM or ATR. ,similarity:Belongs to the bZIP family. ,similarity:Contains 1 bZIP domain. ,similarity:Contains 1 KID (kinase-inducible) domain. ,subunit:Interacts with PPRC1. Binds DNA as a dimer. This dimer is stabilized by magnesium ions. Interacts , through the bZIP domain , with the coactivators TORC1/CRTC1 , TORC2/CRTC2 and TORC3/CRTC3. When phosphorylated on Ser-133 , binds CREBBP. ,

Validation Data



Enzyme-Linked Immunosorbent Assay (Phospho-ELISA) for Immunogen Phosphopeptide (Phospho-left) and Non-Phosphopeptide (Phospho-right), using CREB (Phospho-Ser129) Antibody



Immunohistochemistry analysis of paraffin-embedded human breast carcinoma, using CREB (Phospho-Ser129) Antibody. The picture on the right is blocked with the phospho peptide.

Contact information

Orders: order.cn@immunoway.com
 Support: support.cn@immunoway.com
 Telephone: 400-8787-807(China)
 Website: <http://www.immunoway.com.cn>
 Address: 2200 Ringwood Ave San Jose, CA 95131 USA



Please scan the QR code to access additional product information:
CREB-1 (Phospho Ser129) Rabbit pAb

For Research Use Only. Not for Use in Diagnostic Procedures.

[Antibody](#) | [ELISA Kits](#) | [Protein](#) | [Reagents](#)