

CPI-17 (Phospho Thr38) Rabbit pAb

CatalogNo: YP0073

Key Features

Host Species

- Rabbit

Reactivity

- Human, Mouse, Rat

Applications

- WB, IHC, IF, ELISA

MW

- 22kD (Observed)

Isotype

- IgG

Storage

Storage* -15°C to -25°C/1 year (Do not lower than -25°C)

Formulation Liquid in PBS containing 50% glycerol, 0.5% BSA and 0.02% sodium azide.

Recommended Dilution Ratios

WB 1:500-1:2000

IHC 1:100-1:300

ELISA 1:20000

IF 1:50-200

Basic Information

Clonality Polyclonal

Immunogen Information

Immunogen The antiserum was produced against synthesized peptide derived from human CPI17 alpha around the phosphorylation site of Thr38. AA range:5-54

Specificity

Phospho-CPI-17 (T38) Polyclonal Antibody detects endogenous levels of CPI-17 protein only when phosphorylated at T38. The name of modified sites may be influenced by many factors, such as species (the modified site was not originally found in human samples) and the change of protein sequence (the previous protein sequence is incomplete, and the protein sequence may be prolonged with the development of protein sequencing technology). When naming, we will use the "numbers" in historical reference to keep the sites consistent with the reports. The antibody binds to the following modification sequence (lowercase letters are modification sites):RVtVK

Target Information

Gene name PPP1R14A

Protein Name Protein phosphatase 1 regulatory subunit 14A

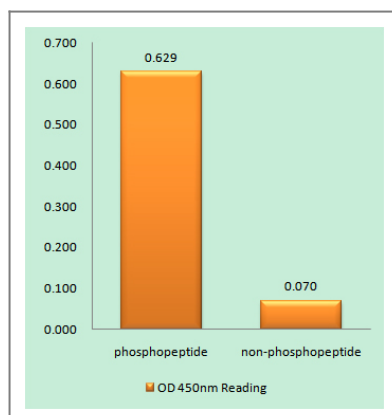
Organism	Gene ID	UniProt ID
Human	94274 ;	Q96A00 ;
Mouse	68458 ;	Q91VC7 ;
Rat	114004 ;	Q99MC0 ;

Cellular Localization Cytoplasm .

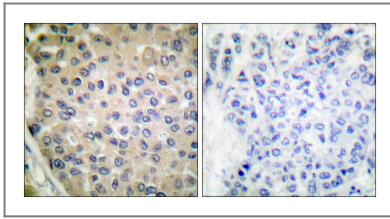
Tissue specificity Isoform 1 is detected in aorta and testis. Isoform 2 is detected in aorta.

Function Function:Inhibitor of PPP1CA. Has over 1000-fold higher inhibitory activity when phosphorylated , creating a molecular switch for regulating the phosphorylation status of PPP1CA substrates and smooth muscle contraction. ,similarity:Belongs to the PP1 inhibitor family. ,tissue specificity:Isoform 1 is detected in aorta and testis. Isoform 2 is detected in aorta. ,

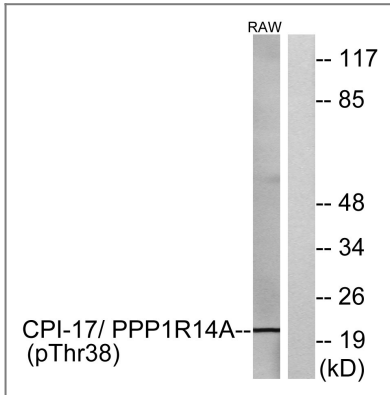
Validation Data



Enzyme-Linked Immunosorbent Assay (Phospho-ELISA) for Immunogen Phosphopeptide (Phospho-left) and Non-Phosphopeptide (Phospho-right), using CPI17 alpha (Phospho-Thr38) Antibody



Immunohistochemistry analysis of paraffin-embedded human breast carcinoma, using CPI17 alpha (Phospho-Thr38) Antibody. The picture on the right is blocked with the phospho peptide.



Western blot analysis of lysates from RAW264.7 cells, using CPI17 alpha (Phospho-Thr38) Antibody. The lane on the right is blocked with the phospho peptide.

Contact information

Orders: order.cn@immunoway.com
Support: support.cn@immunoway.com
Telephone: 400-8787-807(China)
Website: <http://www.immunoway.com.cn>
Address: 2200 Ringwood Ave San Jose, CA 95131 USA



Please scan the QR code to access additional product information:
CPI-17 (Phospho Thr38) Rabbit pAb

For Research Use Only. Not for Use in Diagnostic Procedures.

[Antibody](#) | [ELISA Kits](#) | [Protein](#) | [Reagents](#)