

Cortactin (Phospho Tyr421) Rabbit pAb

CatalogNo: YP0072 **Orthogonal Validated** 

Key Features

Host Species

- Rabbit

Reactivity

- Human, Mouse, Rat

Applications

- WB, IHC, IF, ELISA

MW

- 80kD (Observed)

Isotype

- IgG

Storage

Storage* -15°C to -25°C/1 year (Do not lower than -25°C)

Formulation Liquid in PBS containing 50% glycerol, 0.5% BSA and 0.02% sodium azide.

Recommended Dilution Ratios

WB 1:500-1:2000

IHC 1:100-1:300

ELISA 1:20000

IF 1:50-200

Basic Information

Clonality Polyclonal

Immunogen Information

Immunogen The antiserum was produced against synthesized peptide derived from human Cortactin around the phosphorylation site of Tyr421. AA range:388-437

Specificity

Phospho-Cortactin (Y421) Polyclonal Antibody detects endogenous levels of Cortactin protein only when phosphorylated at Y421. The name of modified sites may be influenced by many factors, such as species (the modified site was not originally found in human samples) and the change of protein sequence (the previous protein sequence is incomplete, and the protein sequence may be prolonged with the development of protein sequencing technology). When naming, we will use the "numbers" in historical reference to keep the sites consistent with the reports. The antibody binds to the following modification sequence (lowercase letters are modification sites): PlyED

Target Information

Gene name CTTN

Protein Name Src substrate cortactin

Organism	Gene ID	UniProt ID
Human	2017;	Q14247;
Mouse	13043;	Q60598;

Cellular Localization

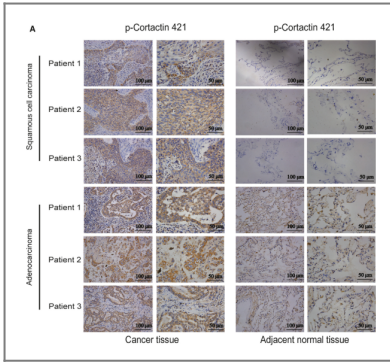
Cytoplasm , cytoskeleton . Cell projection , lamellipodium . Cell projection , ruffle. Cell projection , dendrite . Cell projection . Cell membrane ; Peripheral membrane protein ; Cytoplasmic side . Cell projection , podosome . Cell junction . Cell junction , focal adhesion . Membrane , clathrin-coated pit . Cell projection , dendritic spine . Cytoplasm , cell cortex . Colocalizes transiently with PTK2/FAK1 at focal adhesions (By similarity) . Associated with membrane ruffles and lamellipodia. In the presence of CTTNBP2NL , colocalizes with stress fibers (By similarity) . In the presence of CTTNBP2 , localizes at the cell cortex (By similarity) . In response to neuronal activation by glutamate , redistributes from dendritic spines to the dendritic shaft (By similarity) . Colocalizes with DNM2 at the basis of filopodia in hippocampus neuron growth zones (By similarity) . .

Tissue specificity Coronary artery , Epithelium , Mammary gland , Placenta , Platelet , Testis ,

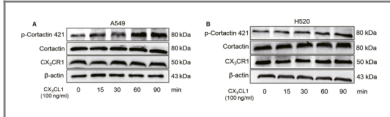
Function

Function: May contribute to the organization of cell structure. The SH3 motif may function as a binding region to cytoskeleton. Tyrosine phosphorylation in transformed cells may contribute to cellular growth regulation and transformation. ,online information: Cortactin entry ,similarity: Contains 1 SH3 domain. ,similarity: Contains 7 cortactin repeats. ,subcellular location: Associated with membrane ruffles and lamellipodia. ,subunit: Interacts with SHANK2 and SHANK3 via its SH2 domain. Also interacts with FGD1 (By similarity) . Interacts with PLXDC2. ,

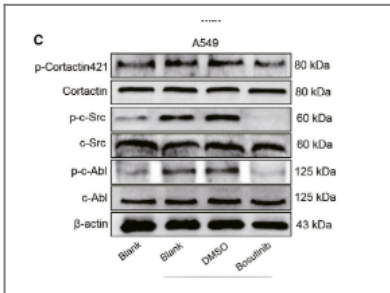
Validation Data



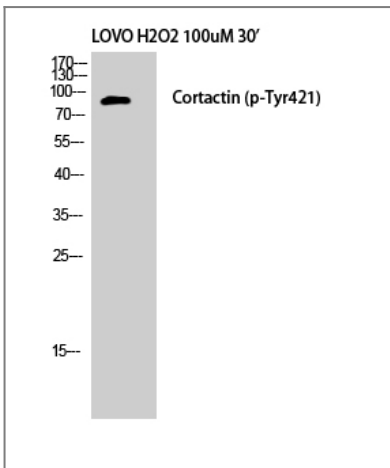
Fan, Mengtian, et al. "CX3CL1 promotes tumour cell by inducing tyrosine phosphorylation of cortactin in lung cancer." *Journal of Cellular and Molecular Medicine* 25.1 (2021): 132-146.



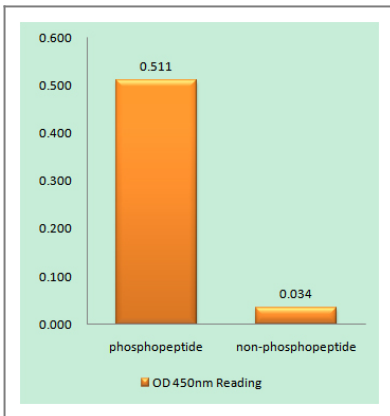
Fan, Mengtian, et al. "CX3CL1 promotes tumour cell by inducing tyrosine phosphorylation of cortactin in lung cancer." *Journal of Cellular and Molecular Medicine* 25.1 (2021): 132-146.



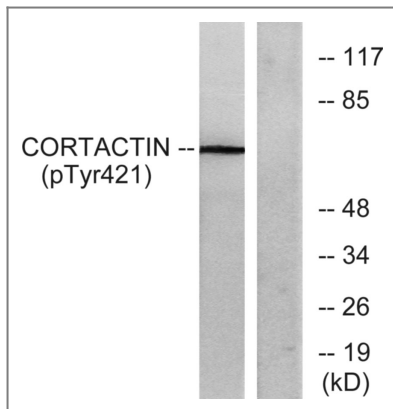
Fan, Mengtian, et al. "CX3CL1 promotes tumour cell by inducing tyrosine phosphorylation of cortactin in lung cancer." *Journal of Cellular and Molecular Medicine* 25.1 (2021): 132-146.



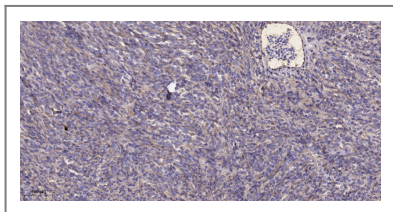
Western Blot analysis of LOVO+H2O2 cells using Phospho-Cortactin (Y421) Polyclonal Antibody



Enzyme-Linked Immunosorbent Assay (Phospho-ELISA) for Immunogen Phosphopeptide (Phospho-left) and Non-Phosphopeptide (Phospho-right), using Cortactin (Phospho-Tyr421) Antibody



Western blot analysis of lysates from HeLa cells treated with H₂O₂, using Cortactin (Phospho-Tyr421) Antibody. The lane on the right is blocked with the phospho peptide.



Immunohistochemical analysis of paraffin-embedded human Colon cancer. 1, Antibody was diluted at 1:200 (4°C overnight). 2, Tris-EDTA, pH9.0 was used for antigen retrieval. 3, Secondary antibody was diluted at 1:200 (room temperature, 45min).

Contact information

Orders: order.cn@immunoway.com
 Support: support.cn@immunoway.com
 Telephone: 400-8787-807(China)
 Website: <http://www.immunoway.com.cn>
 Address: 2200 Ringwood Ave San Jose, CA 95131 USA



Please scan the QR code to access additional product information:
Cortactin (Phospho-Tyr421) Rabbit pAb

For Research Use Only. Not for Use in Diagnostic Procedures.

[Antibody](#) | [ELISA Kits](#) | [Protein](#) | [Reagents](#)