

c-Kit/CD117 (Phospho Tyr721) Rabbit pAb

CatalogNo: YP0066 **Orthogonal Validated** 

Key Features

Host Species

- Rabbit

Reactivity

- Human, Mouse, Rat

Applications

- WB, ELISA

MW

- 110kD (Observed)

Isotype

- IgG

Storage

Storage* -15°C to -25°C/1 year (Do not lower than -25°C)

Formulation Liquid in PBS containing 50% glycerol, 0.5% BSA and 0.02% sodium azide.

Recommended Dilution Ratios

WB 1:500-1:2000

ELISA 1:10000

Not yet tested in other applications.

Basic Information

Clonality Polyclonal

Immunogen Information

Immunogen The antiserum was produced against synthesized peptide derived from human c-Kit around the phosphorylation site of Tyr721. AA range:688-737

Specificity Phospho-c-Kit (Y721) Polyclonal Antibody detects endogenous levels of c-Kit protein only when phosphorylated at Y721. The name of modified sites may be influenced by many factors, such as species (the modified site was not originally found in human samples) and the change of protein sequence (the previous protein sequence is incomplete, and the protein sequence may be prolonged with the development of protein sequencing technology). When naming, we will use the "numbers" in historical reference to keep the sites consistent with the reports. The antibody binds to the following modification sequence (lowercase letters are modification sites):NEyMD

| Target Information

Gene name KIT SCFR

Protein Name Mast/stem cell growth factor receptor Kit

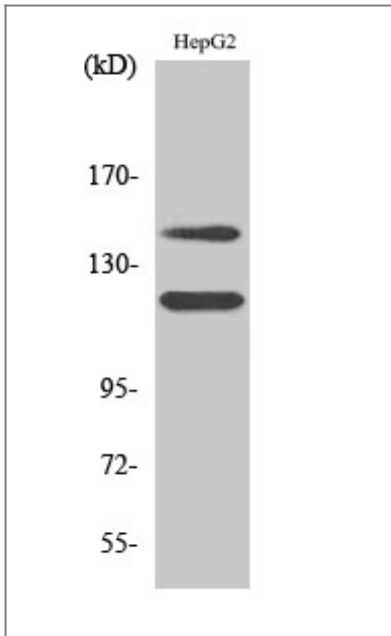
Organism	Gene ID	UniProt ID
Human	3815 ;	P10721 ;
Mouse	16590 ;	P05532 ;

Cellular Localization [Isoform 1]: Cell membrane; Single-pass type I membrane protein.; [Isoform 2]: Cell membrane; Single-pass type I membrane protein.; [Isoform 3]: Cytoplasm . Detected in the cytoplasm of spermatozoa , especially in the equatorial and subacrosomal region of the sperm head. .

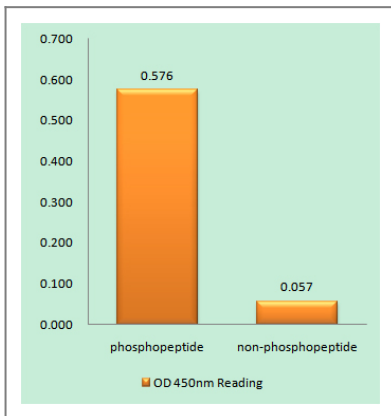
Tissue specificity [Isoform 3]: In testis , detected in spermatogonia in the basal layer and in interstitial Leydig cells but not in Sertoli cells or spermatocytes inside the seminiferous tubules (at protein level) (PubMed:20601678) . Expression is maintained in ejaculated spermatozoa (at protein level) (PubMed:20601678) .

Function Catalytic activity:ATP + a [protein]-L-tyrosine = ADP + a [protein]-L-tyrosine phosphate. ,Disease:Defects in KIT are a cause of gastrointestinal stromal tumor (GIST) [MIM:606764]. ,Disease:Defects in KIT are a cause of piebaldism [MIM:172800]. Piebaldism is an autosomal dominant genetic developmental abnormality of pigmentation characterized by congenital patches of white skin and hair that lack melanocytes. ,Disease:Defects in KIT have been associated with testicular tumors [MIM:273300]. It includes germ cell tumor (GCT) or testicular germ cell tumor (TGCT) . ,Function:This is the receptor for stem cell factor (mast cell growth factor) . It has a tyrosine-protein kinase activity. Binding of the ligands leads to the autophosphorylation of KIT and its association with substrates such as phosphatidylinositol 3-kinase (Pi3K) . ,online information:CD117 entry ,similarity:Belongs to the protein kinase superfamily. Tyr protein kinase family. ,similarity:Belongs to the protein kinase superfamily. Tyr protein kinase family. CSF-1/PDGF receptor subfamily. ,similarity:Contains 1 protein kinase domain. ,similarity:Contains 5 Ig-like C2-type (immunoglobulin-like) domains. ,subunit:Interacts with APS. Interacts with MPDZ (via the tenth PDZ domain) . Interacts with PTPRU. ,

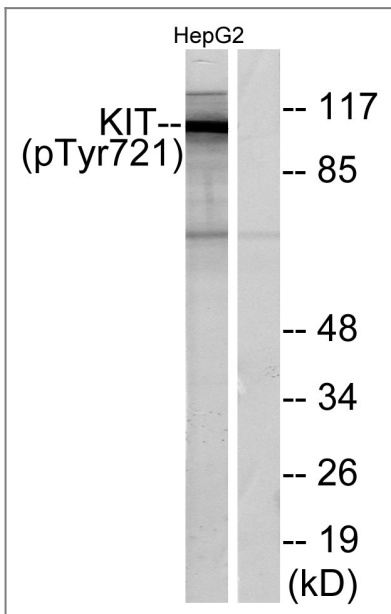
| Validation Data



Western Blot analysis of various cells using Phospho-c-Kit (Y721) Polyclonal Antibody



Enzyme-Linked Immunosorbent Assay (Phospho-ELISA) for Immunogen Phosphopeptide (Phospho-left) and Non-Phosphopeptide (Phospho-right), using c-Kit (Phospho-Tyr721) Antibody



Western blot analysis of lysates from HepG2 cells treated with EGF 200ng/ml 30', using c-Kit (Phospho-Tyr721) Antibody. The lane on the right is blocked with the phospho peptide.

Contact information

Orders: order.cn@immunoway.com
Support: support.cn@immunoway.com
Telephone: 400-8787-807(China)
Website: <http://www.immunoway.com.cn>
Address: 2200 Ringwood Ave San Jose, CA 95131 USA



Please scan the QR code
to access additional
product information:
c-Kit/CD117
(Phospho Tyr721)
Rabbit pAb

For Research Use Only. Not for Use in Diagnostic Procedures.

[Antibody](#) | [ELISA Kits](#) | [Protein](#) | [Reagents](#)