

## CD3 $\zeta$ (Phospho Tyr142) Rabbit pAb

CatalogNo: YP0051 **Orthogonal Validated** 

### Key Features

#### Host Species

- Rabbit

#### Reactivity

- Human, Mouse, Rat, Monkey

#### Applications

- WB, IHC, IF, ELISA

#### MW

- 20kD (Observed)

#### Isotype

- IgG

### Storage

**Storage\*** -15°C to -25°C/1 year (Do not lower than -25°C)

**Formulation** Liquid in PBS containing 50% glycerol, 0.5% BSA and 0.02% sodium azide.

### Recommended Dilution Ratios

**WB 1:500-1:2000**

**IHC 1:100-1:300**

**ELISA 1:5000**

**IF 1:50-200**

### Basic Information

**Clonality** Polyclonal

### Immunogen Information

**Immunogen** The antiserum was produced against synthesized peptide derived from human CD3 zeta around the phosphorylation site of Tyr142. AA range:111-160

## Specificity

Phospho-CD3 ζ (Y142) Polyclonal Antibody detects endogenous levels of CD3 ζ protein only when phosphorylated at Y142. The name of modified sites may be influenced by many factors, such as species (the modified site was not originally found in human samples) and the change of protein sequence (the previous protein sequence is incomplete, and the protein sequence may be prolonged with the development of protein sequencing technology). When naming, we will use the "numbers" in historical reference to keep the sites consistent with the reports. The antibody binds to the following modification sequence (lowercase letters are modification sites):GLyQG

---

## Target Information

**Gene name** CD247

**Protein Name** T-cell surface glycoprotein CD3 zeta chain

Organism	Gene ID	UniProt ID
Human	<a href="#">919</a> ;	<a href="#">P20963</a> ;
Mouse	<a href="#">12503</a> ;	<a href="#">P24161</a> ;

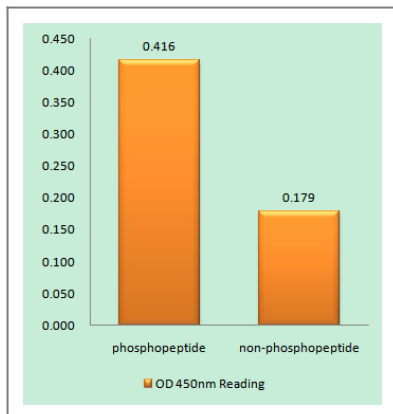
**Cellular Localization** Cell membrane ; Single-pass type I membrane protein.

**Tissue specificity** CD3Z is expressed in normal lymphoid tissue and in peripheral blood mononuclear cells (PBMCs) (PubMed:11722641) .

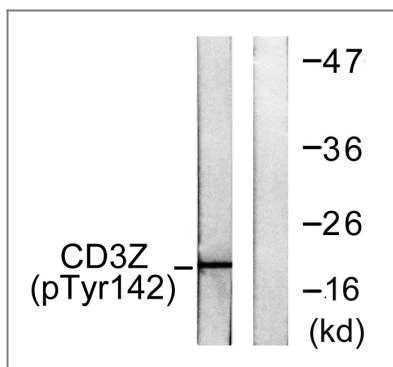
**Function** Disease:Defects in CD247 are a cause of primary T-cell immunodeficiency [MIM:610163]. Affected individuals suffer of recurrent infections. Patients T-cell counts are very low and B-cell counts are normal. ,Domain:The ITAM domains mediate interaction with SHB. ,Function:Probable role in assembly and expression of the TCR complex as well as signal transduction upon antigen triggering. ,online information:CD247 mutation db ,PTM:Phosphorylated on Tyr residues after T-cell receptor triggering. ,similarity:Belongs to the CD3Z/FCER1G family. ,similarity:Contains 3 ITAM domains. ,subunit:The TCR/CD3 complex of T-lymphocytes consists of either a TCR alpha/beta or TCR gamma/delta heterodimer coexpressed at the cell surface with the invariant subunits of CD3 labeled gamma , delta , epsilon , zeta , and eta. CD3-zeta forms either homodimers or heterodimers with CD3-eta. Interacts with SLA and SLA2. Interacts with DOCK2 and TRAT1. Interacts with HIV-1 Nef protein. Interacts with SHB. ,

---

## Validation Data



Enzyme-Linked Immunosorbent Assay (Phospho-ELISA) for Immunogen Phosphopeptide (Phospho-left) and Non-Phosphopeptide (Phospho-right), using CD3 zeta (Phospho-Tyr142) Antibody



Western blot analysis of lysates from Jurkat cells treated with UV 15', using CD3 zeta (Phospho-Tyr142) Antibody. The lane on the right is blocked with the phospho peptide.

## Contact information

Orders: order.cn@immunoway.com  
 Support: support.cn@immunoway.com  
 Telephone: 400-8787-807(China)  
 Website: <http://www.immunoway.com.cn>  
 Address: 2200 Ringwood Ave San Jose, CA 95131 USA



Please scan the QR code to access additional product information:  
**CD3 ζ (Phospho Tyr142) Rabbit pAb**

For Research Use Only. Not for Use in Diagnostic Procedures.

[Antibody](#) | [ELISA Kits](#) | [Protein](#) | [Reagents](#)