

Caveolin-1 (Phospho Tyr14) Rabbit pAb

CatalogNo: YP0050 **Orthogonal Validated** 

Key Features

Host Species

- Rabbit

Reactivity

- Human, Mouse, Rat

Applications

- WB, ELISA

MW

- 20kD (Observed)

Isotype

- IgG

Storage

Storage* -15°C to -25°C/1 year (Do not lower than -25°C)

Formulation Liquid in PBS containing 50% glycerol, 0.5% BSA and 0.02% sodium azide.

Recommended Dilution Ratios

WB 1:500-1:2000

ELISA 1:20000

Not yet tested in other applications.

Basic Information

Clonality Polyclonal

Immunogen Information

Immunogen The antiserum was produced against synthesized peptide derived from human Caveolin-1 around the phosphorylation site of Tyr14. AA range:5-54

Specificity Phospho-Caveolin-1 (Y14) Polyclonal Antibody detects endogenous levels of Caveolin-1 protein only when phosphorylated at Y14. The name of modified sites may be influenced by many factors, such as species (the modified site was not originally found in human samples) and the change of protein sequence (the previous protein sequence is incomplete, and the protein sequence may be prolonged with the development of protein sequencing technology). When naming, we will use the "numbers" in historical reference to keep the sites consistent with the reports. The antibody binds to the following modification sequence (lowercase letters are modification sites):HLYTV

| Target Information

Gene name CAV1

Protein Name Caveolin-1

Organism	Gene ID	UniProt ID
Human	857 ;	Q03135 ;
Mouse	12389 ;	P49817 ;
Rat		P41350 ;

Cellular Localization

Golgi apparatus membrane; Peripheral membrane protein. Cell membrane; Peripheral membrane protein. Membrane , caveola ; Peripheral membrane protein. Membrane raft . Golgi apparatus , trans-Golgi network . Colocalized with DPP4 in membrane rafts. Potential hairpin-like structure in the membrane. Membrane protein of caveolae.

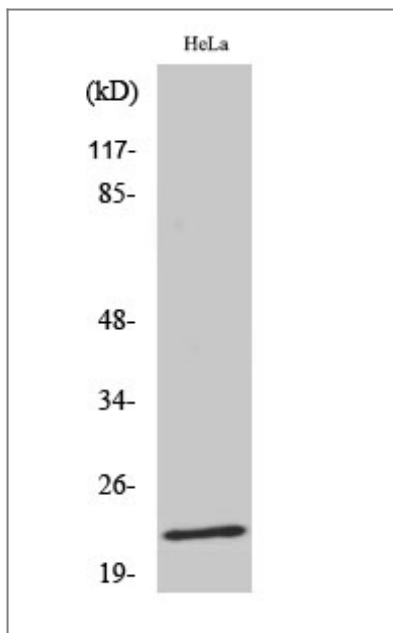
Tissue specificity

Skeletal muscle , liver , stomach , lung , kidney and heart (at protein level) . Expressed in the brain.

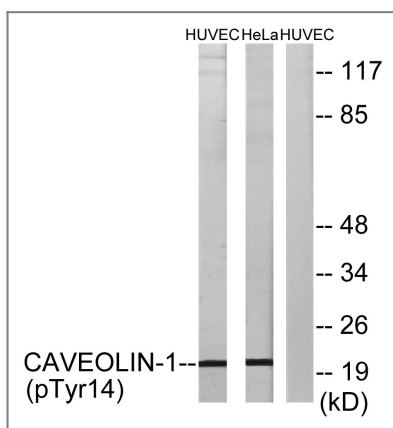
Function

Disease:Defects in CAV1 are the cause of congenital generalized lipodystrophy type 3 (CGL3) [MIM:612526]; also called Berardinelli-Seip congenital lipodystrophy type 3 (BSCL3) . Congenital generalized lipodystrophies are autosomal recessive disorders characterized by a near absence of adipose tissue , extreme insulin resistance , hypertriglyceridemia , hepatic steatosis and early onset of diabetes. ,Function:May act as a scaffolding protein within caveolar membranes. Interacts directly with G-protein alpha subunits and can functionally regulate their activity. ,online information:Caveolin entry ,PTM:The initiator methionine for isoform Beta is removed during or just after translation. The new N-terminal amino acid is then N-acetylated. ,similarity:Belongs to the caveolin family. ,subcellular location:Potential hairpin-like structure in the membrane. Membrane protein of caveolae. ,subunit:Homooligomer. Interacts with GLIPR2 , NOSTRIN , SNAP25 and syntaxin. Interacts with rotavirus A NSP4. ,tissue specificity:In muscle and lung , less so in liver , brain and kidney. ,

| Validation Data



Western Blot analysis of HeLa cells using Phospho-Caveolin-1 (Y14) Polyclonal Antibody diluted at 1:1000



Western blot analysis of lysates from HUVEC cells treated with PMA 125ng/ml 30' and HeLa cells treated with LPS 100ng/ml 30', using Caveolin-1 (Phospho-Tyr14) Antibody. The lane on the right is blocked with the phospho peptide.

Contact information

Orders: order.cn@immunoway.com
 Support: support.cn@immunoway.com
 Telephone: 400-8787-807(China)
 Website: <http://www.immunoway.com.cn>
 Address: 2200 Ringwood Ave San Jose, CA 95131 USA



Please scan the QR code to access additional product information:
Caveolin-1 (Phospho Tyr14) Rabbit pAb

For Research Use Only. Not for Use in Diagnostic Procedures.

[Antibody](#) | [ELISA Kits](#) | [Protein](#) | [Reagents](#)