

Caspase-6 (Phospho Ser257) Rabbit pAb

CatalogNo: YP0044 **Orthogonal Validated** 

Key Features

Host Species

- Rabbit

Reactivity

- Human, Mouse, Rat

Applications

- WB, IHC, IF, ELISA

MW

- 15,30kD (Observed)

Isotype

- IgG

Storage

Storage* -15°C to -25°C/1 year (Do not lower than -25°C)

Formulation Liquid in PBS containing 50% glycerol, 0.5% BSA and 0.02% sodium azide.

Recommended Dilution Ratios

WB 1:500-1:2000

IHC 1:100-1:300

IF 1:200-1:1000

ELISA 1:20000

Not yet tested in other applications.

Basic Information

Clonality Polyclonal

Immunogen Information

Immunogen The antiserum was produced against synthesized peptide derived from human Caspase 6 around the phosphorylation site of Ser257. AA range:223-272

Specificity

Phospho-Caspase-6 (S257) Polyclonal Antibody detects endogenous levels of Caspase-6 protein only when phosphorylated at S257. The name of modified sites may be influenced by many factors, such as species (the modified site was not originally found in human samples) and the change of protein sequence (the previous protein sequence is incomplete, and the protein sequence may be prolonged with the development of protein sequencing technology). When naming, we will use the "numbers" in historical reference to keep the sites consistent with the reports. The antibody binds to the following modification sequence (lowercase letters are modification sites):KV_sQR

Target Information

Gene name CASP6

Protein Name Caspase6

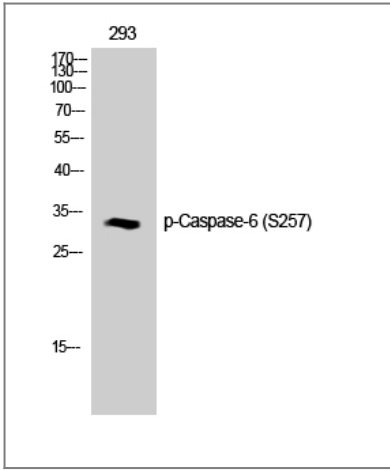
Organism	Gene ID	UniProt ID
Human	839 ;	P55212 ;
Mouse	12368 ;	O08738 ;
Rat		O35397 ;

Cellular Localization Cytoplasm . Nucleus .

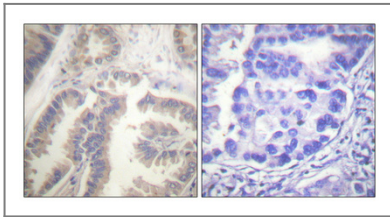
Tissue specificity Lung ,Lymphocyte ,T-cell ,

Function Catalytic activity:Strict requirement for Asp at position P1 and has a preferred cleavage sequence of Val-Glu-His-Asp-|- . ,enzyme regulation:Activation is suppressed by phosphorylation at Ser-257. ,Function:Involved in the activation cascade of caspases responsible for apoptosis execution. Cleaves poly (ADP-ribose) polymerase in vitro , as well as lamins. Overexpression promotes programmed cell death. ,PTM:Cleavages by caspase-3 , caspase-8 or -10 generate the two active subunits. ,similarity:Belongs to the peptidase C14A family. ,subunit:Heterotetramer that consists of two anti-parallel arranged heterodimers , each one formed by a 18 kDa (p18) and a 11 kDa (p11) subunit. ,

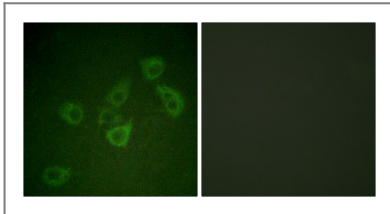
Validation Data



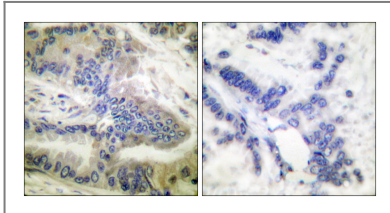
Western Blot analysis of 293T cells using Phospho-Caspase-6 (S257) Polyclonal Antibody diluted at 1:1000



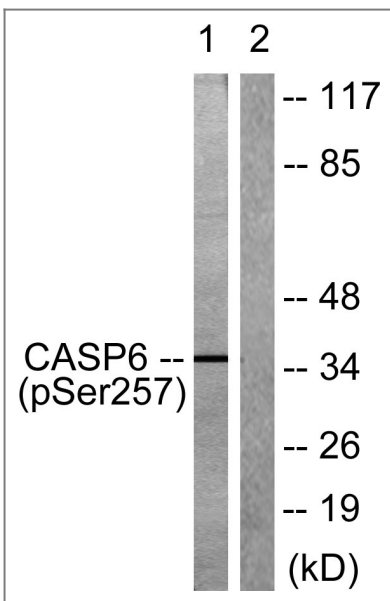
Immunohistochemical analysis of paraffin-embedded Human lung cancer. Antibody was diluted at 1:100 (4°C overnight). High-pressure and temperature Tris-EDTA, pH8.0 was used for antigen retrieval. Negative control (right) obtained from antibody was pre-absorbed by immunogen peptide.



Immunofluorescence analysis of HUVEC cells, using Caspase 6 (Phospho-Ser257) Antibody. The picture on the right is blocked with the phospho peptide.



Immunohistochemistry analysis of paraffin-embedded human colon carcinoma, using Caspase 6 (Phospho-Ser257) Antibody. The picture on the right is blocked with the phospho peptide.



Western blot analysis of lysates from 293 cells treated with Etoposide 25uM 60', using Caspase 6 (Phospho-Ser257) Antibody. The lane on the right is blocked with the phospho peptide.

| Contact information

Orders: order.cn@immunoway.com
Support: support.cn@immunoway.com
Telephone: 400-8787-807(China)
Website: <http://www.immunoway.com.cn>
Address: 2200 Ringwood Ave San Jose, CA 95131 USA



Please scan the QR code to access additional product information:
Caspase-6 (Phospho Ser257) Rabbit pAb

For Research Use Only. Not for Use in Diagnostic Procedures.

[Antibody](#) | [ELISA Kits](#) | [Protein](#) | [Reagents](#)