

ATF-2 (Phospho Ser112) Rabbit pAb

CatalogNo: YP0023 **Orthogonal Validated** 

Comparable Abs 

Key Features

Host Species

- Rabbit

Reactivity

- Human, Mouse, Rat

Applications

- WB, IHC, IF, IP, ELISA

MW

- 52kD (Calculated)

Isotype

- IgG

Storage

Storage* -15°C to -25°C/1 year (Do not lower than -25°C)

Formulation Liquid in PBS containing 50% glycerol, 0.5% BSA and 0.02% sodium azide.

Recommended Dilution Ratios

WB 1:500-1:2000

IHC 1:100-1:300

IP 2-5 ug/mg lysate

ELISA 1:20000

IF 1:50-200

Basic Information

Clonality Polyclonal

Immunogen Information

Immunogen The antiserum was produced against synthesized peptide derived from human ATF2 around the phosphorylation site of Ser112 or 94. AA range:79-128

Specificity

Phospho-ATF-2 (S112) Polyclonal Antibody detects endogenous levels of ATF-2 protein only when phosphorylated at S112. The name of modified sites may be influenced by many factors, such as species (the modified site was not originally found in human samples) and the change of protein sequence (the previous protein sequence is incomplete, and the protein sequence may be prolonged with the development of protein sequencing technology). When naming, we will use the "numbers" in historical reference to keep the sites consistent with the reports. The antibody binds to the following modification sequence (lowercase letters are modification sites):DLsPL

Target Information

Gene name ATF2

Protein Name Cyclic AMP-dependent transcription factor ATF-2

Organism	Gene ID	UniProt ID
Human	1386 ;	P15336 ;
Mouse	11909 ;	P16951 ;
Rat	81647 ;	Q00969 ;

Cellular Localization

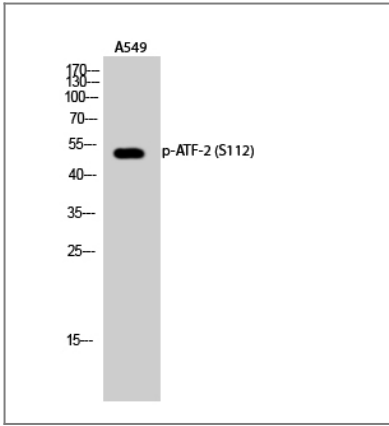
Nucleus. Cytoplasm. Mitochondrion outer membrane. Shuttles between the cytoplasm and the nucleus and heterodimerization with JUN is essential for the nuclear localization. Localization to the cytoplasm is observed under conditions of cellular stress and in disease states. Localizes at the mitochondrial outer membrane in response to genotoxic stress. Phosphorylation at Thr-52 is required for its nuclear localization and negatively regulates its mitochondrial localization. Co-localizes with the MRN complex in the IR-induced foci (IRIF) .

Tissue specificity Ubiquitously expressed , with more abundant expression in the brain.

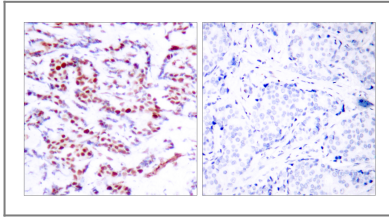
Function

Caution:It is uncertain whether Met-1 or Met-19 is the initiator. ,Function:Transcriptional activator , probably constitutive , which binds to the cAMP-responsive element (CRE) (consensus: 5'-GTGACGT[AC][AG]-3') , a sequence present in many viral and cellular promoters. Interaction with JUN redirects JUN to bind to CRES preferentially over the 12-O-tetradecanoylphorbol-13-acetate response elements (TRES) as part of an ATF2-c-Jun complex. ,PTM:Phosphorylation of Thr-69 and Thr-71 by MAPK14 causes increased transcriptional activity. Also phosphorylated and activated by JNK. ,similarity:Belongs to the bZIP family. ,similarity:Belongs to the bZIP family. ATF subfamily. ,similarity:Contains 1 bZIP domain. ,similarity:Contains 1 C2H2-type zinc finger. ,subunit:Binds DNA as a dimer and can form a homodimer in the absence of DNA. Can form a heterodimer with JUN. Interacts with SMAD3 and SMAD4. Binds through its N-terminal region to UTF1 which acts as a coactivator of ATF2 transcriptional activity. ,tissue specificity:Abundant expression seen in the brain. ,

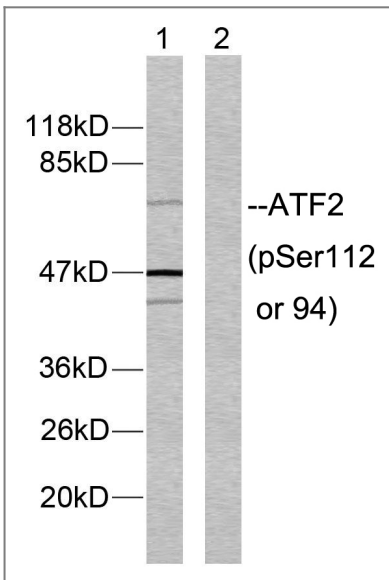
Validation Data



Western Blot analysis of A549 cells using Phospho-ATF-2 (S112) Polyclonal Antibody diluted at 1:500



Immunohistochemistry analysis of paraffin-embedded human breast carcinoma, using ATF2 (Phospho-Ser112 or 94) Antibody. The picture on the right is blocked with the phospho peptide.



Western blot analysis of lysates from MDA-MB-435 cells, using ATF2 (Phospho-Ser112 or 94) Antibody. The lane on the right is blocked with the phospho peptide.

Contact information

Orders: order.cn@immunoway.com
 Support: support.cn@immunoway.com
 Telephone: 400-8787-807(China)
 Website: <http://www.immunoway.com.cn>
 Address: 2200 Ringwood Ave San Jose, CA 95131 USA



Please scan the QR code to access additional product information:
ATF-2 (Phospho Ser112) Rabbit pAb